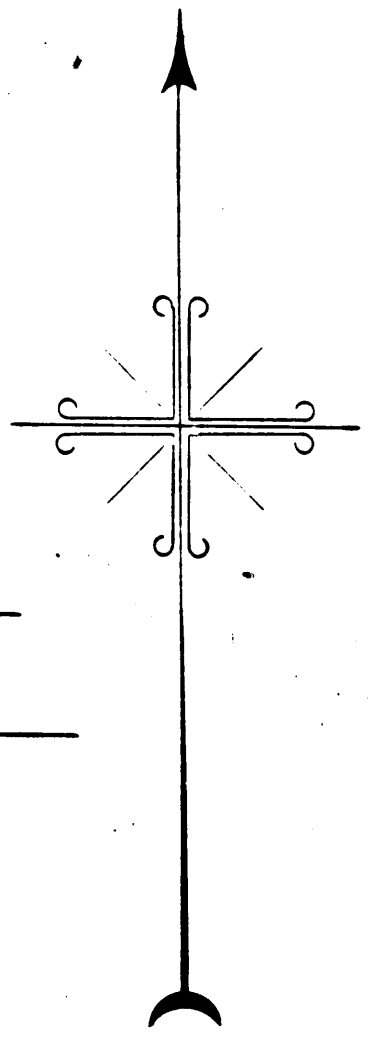
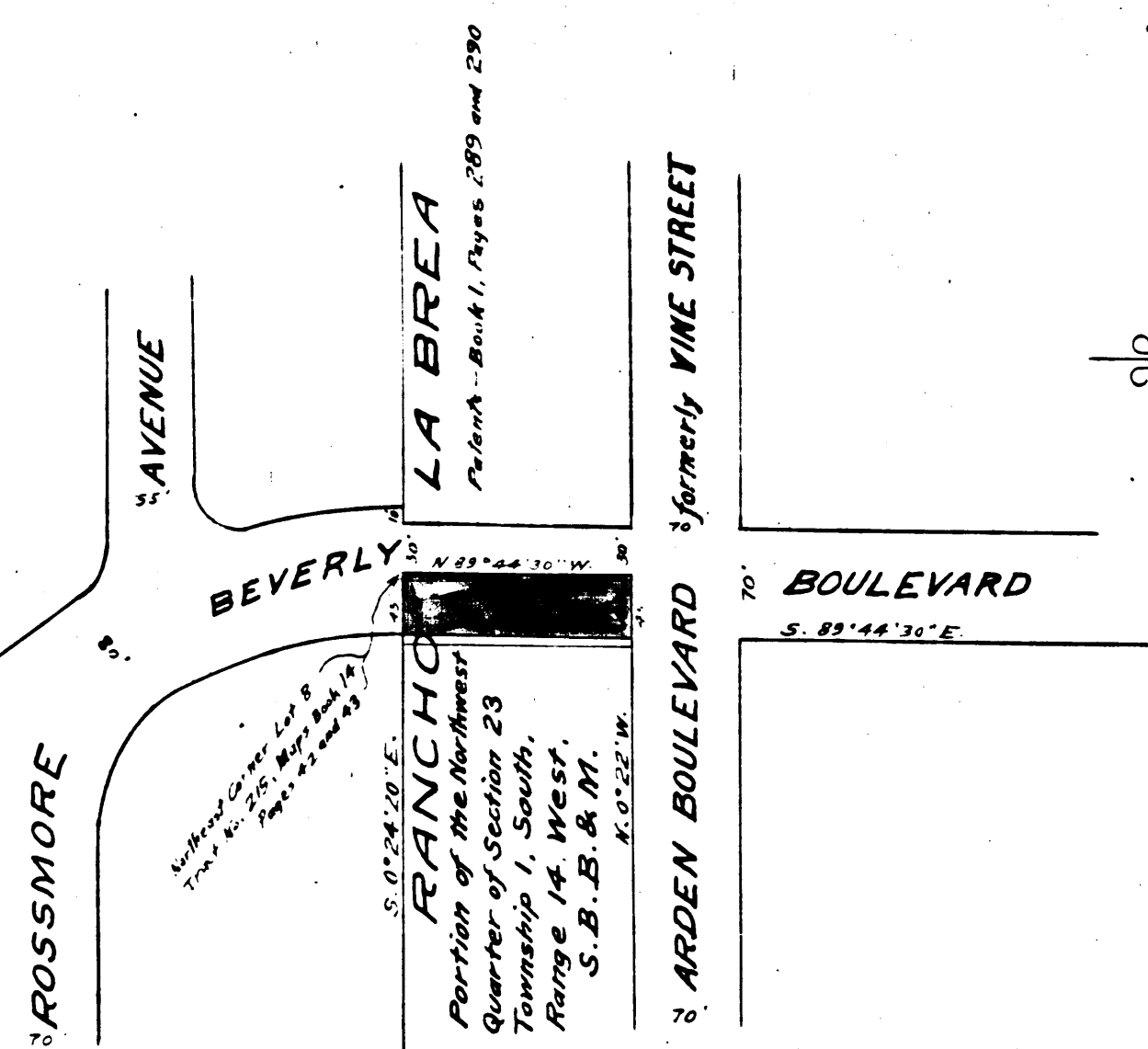


10TH 957
H105
0 2 4 6 8 10 12 14 16 18 20 22 24 26 28 30 32 34 36 38 40 42 44 46 48 50 52 54 56 58 60 62 64 66 68 70 72 74 76 78 80 82 84 86 88 90

A-1634

A-1634

ENGINEER'S OFFICE
231 BEECHER ST.
LOS ANGELES, CALIF.



MAP
SHOWING LAND TO BE CONDEMNED
FOR THE OPENING AND WIDENING OF
BEVERLY BOULEVARD
BETWEEN
VINE STREET (Now ARDEN BOULEVARD)
AND
ROSSMORE AVENUE
IN THE
CITY OF LOS ANGELES, CALIF.

In accordance with Ordinances Nos. 44425 and 45837 (New Series)
John A. Griffin, City Engineer. May, 1923.
Scale 1 inch = 100 feet.

Superior Court Case No. 122990.
Suit for Condemnation.
Filed May 26th 1923
City of Los Angeles P.H.A.
Vs.
Schneider, et ux, et al. Def.
Interlocutory Judgment Rendered Feb 27th 1924
Pending May 10th 1924

Note: - Land to be Condemned shown colored Red.

Final Judgment of the Superior Court of the County of Los Angeles, California, rendered July 25, 1924.
D-20-34 O.R. 4011-63

A-1634

C.F. 1042

A-1634

CITY ENGINEER
JOHN A. GRIFFIN
CITY OF THE

A-1634

10TH 957
H105
0 2 4 6 8 10 12 14 16 18 20 22 24 26 28 30 32 34 36 38 40 42 44 46 48 50 52 54 56 58 60 62 64 66 68 70 72 74 76 78 80 82 84 86 88 90