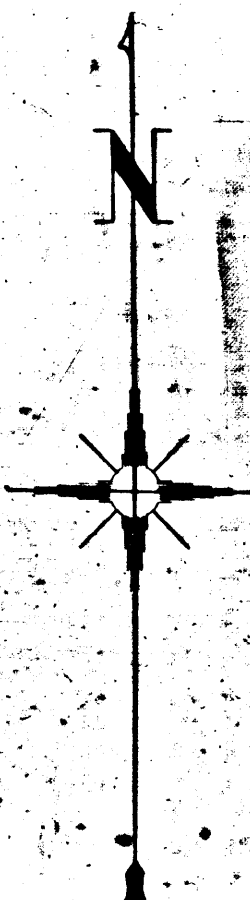
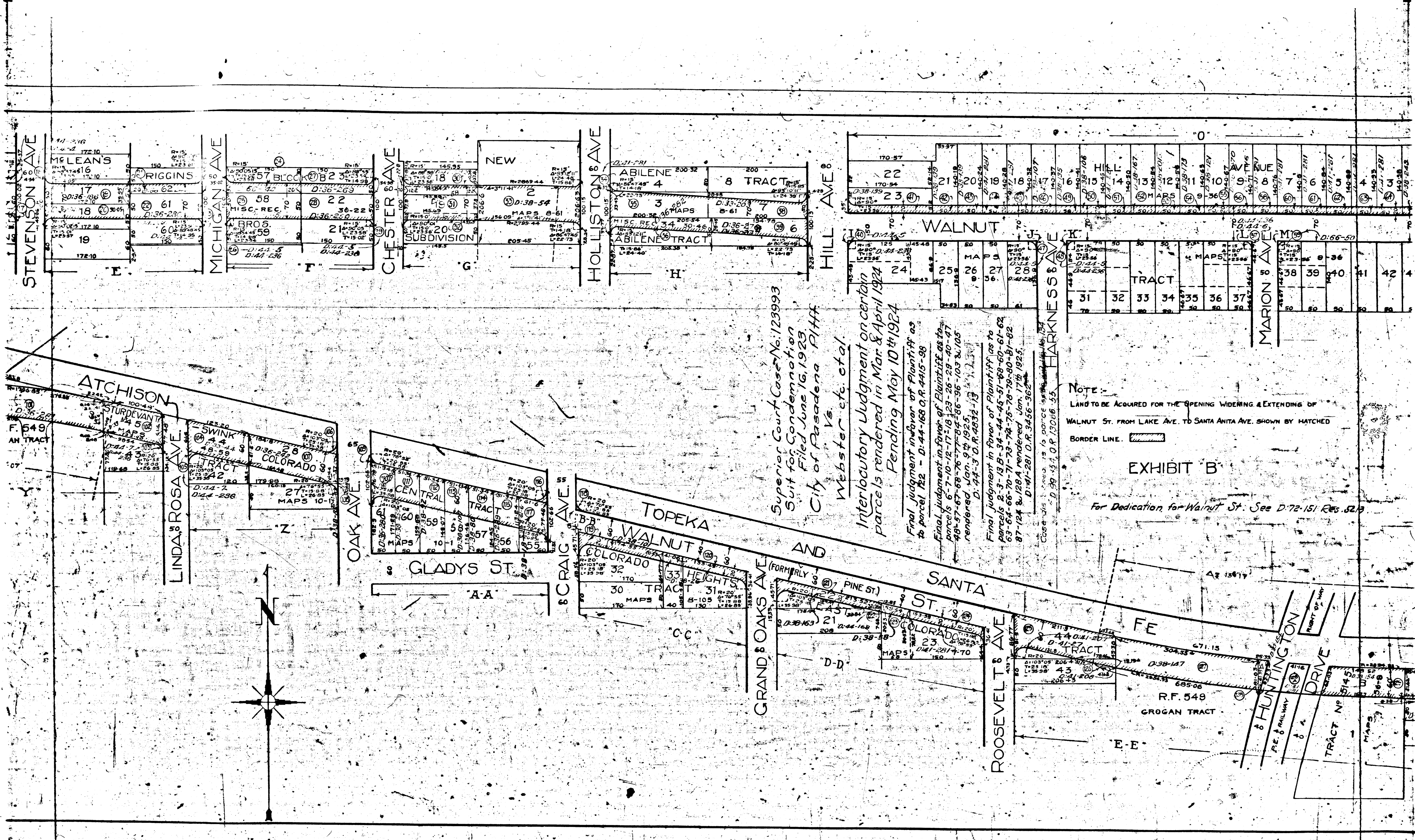


Index 8

1-2-3



60
MAPS
1-50

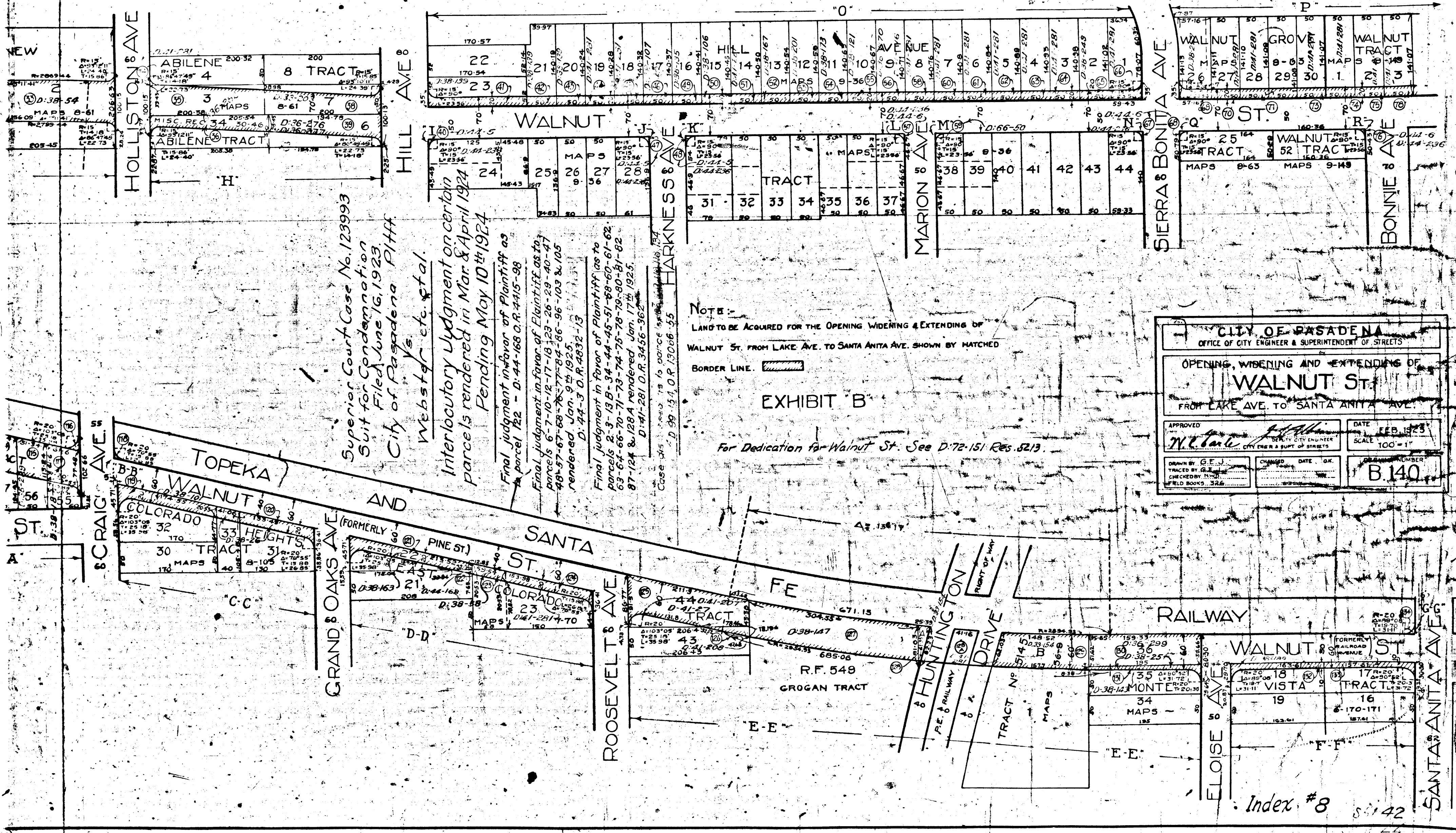


Superior Court Case No. 123993
 Suit for Condemnation
 Filed June 16, 1923
 City of Pasadena Plaintiff
 Webster etc. et al.
 Interlocutory Judgment on certain
 parcels rendered in Mar. & April 1924
 Pending May 10th 1924
 Final judgment in favor of Plaintiff as
 to parcel 22 - D: 44-168 O.R. 4415-98
 Final judgment in favor of Plaintiff as to
 parcels 6-7-10-12-17-18-23-26-29-40-47
 48-57-67-68-76-77-84-86-96-103 & 105
 rendered Jan. 9th 1925.
 D: 44-3 O.R. 4832-13
 Final judgment in favor of Plaintiff as to
 parcels 2-3-13B-34-44-45-51-68-69-61-62
 63-64-66-70-71-73-74-75-76-78-79-80-81-82
 87-124 & 128A rendered Jan. 17th 1925.
 D: 41-281 O.R. 3456-362

NOTE:
 LAND TO BE ACQUIRED FOR THE OPENING WIDENING & EXTENDING OF
 WALNUT ST. FROM LAKE AVE. TO SANTA ANITA AVE. SHOWN BY HATCHED
 BORDER LINE.

EXHIBIT B

For Dedication for Walnut St. See D: 72-151 Res. 6219



Superior Court Case No. 123993
 Suit for Condemnation
 Filed June 16, 1923
 City of Pasadena Pltff
 Webster et al. vs
 Interlocutory Judgment on certain
 parcels rendered in Mar & April 1924
 Pending May 10th 1924
 Final judgment in favor of Plaintiff as
 to parcel 122 - D:44-168 O.R. 4415-98
 Final judgment in favor of Plaintiff as to
 parcels 6-7-10-12-17-18-23-26-29-40-47
 48-57-67-68-70-72-73-84-86-96-103 & 105
 rendered Jan. 9th 1925
 D:44-3 O.R. 4632-13
 Final judgment in favor of Plaintiff as to
 parcels 2-3-13 B-34-44-45-51-59-60-61-62
 63-64-66-70-71-73-74-75-78-79-80-81-82
 87-124 & 128 A rendered Jan. 17th 1925
 D:44-281 O.R. 3456-362
 Case 315
 Parcel 75 1/2 parcel 122
 D:99-134 O.R. 13026-95

NOTE:
 LAND TO BE ACQUIRED FOR THE OPENING WIDENING & EXTENDING OF
 WALNUT ST. FROM LAKE AVE. TO SANTA ANITA AVE. SHOWN BY MATCHED
 BORDER LINE.

EXHIBIT B

For Dedication to Walnut St. See D:72-151 Res. 5219.

CITY OF PASADENA OFFICE OF CITY ENGINEER & SUPERINTENDENT OF STREETS	
OPENING, WIDENING AND EXTENDING OF WALNUT ST. FROM LAKE AVE. TO SANTA ANITA AVE.	
APPROVED <i>[Signature]</i> CITY ENGINEER & S.U.P.T. OF STREETS	DATE FEB. 15, 1925 SCALE 100' = 1"
DRAWN BY G.E.J. CHECKED BY [Name] FIELD BOOKS 326	SHEET NUMBER B.140

Index #8 54142