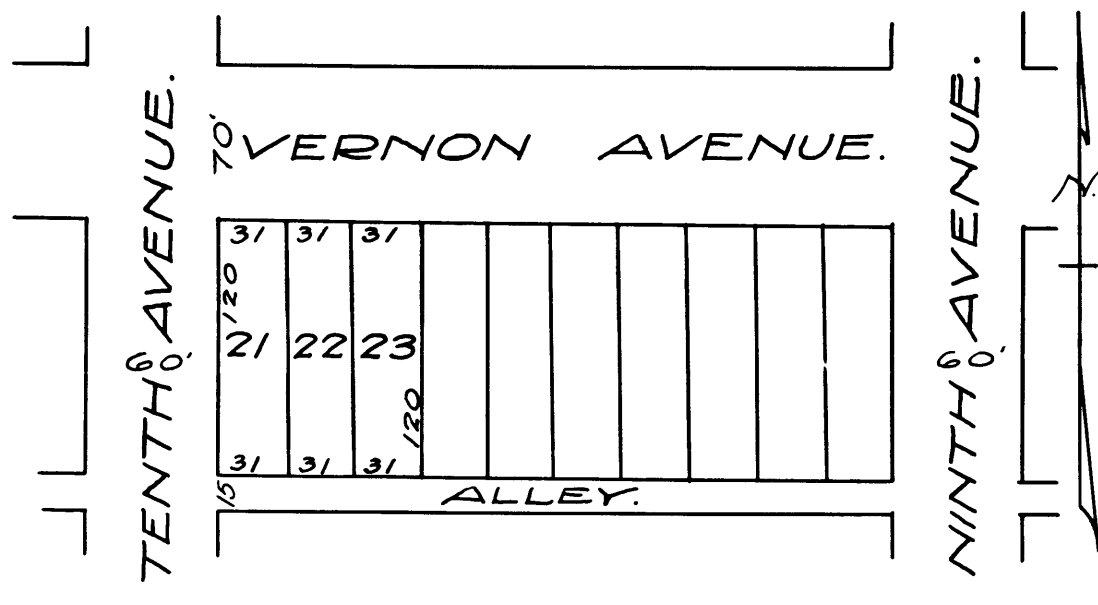


PLAT OF
 Lot No. 23 TRACT No. 3813.
 SHEETS 1 & 2 - MAPS 59-26-27
 To be Condemned for a Pumping Station.



Superior Court Case No. 125131.
 Suit for Condemnation.
 Filed - July 9, 1923
 City of Los Angeles - Pltff
 Vs.
 Abrams, etc. et al. - Def.
 Interlocutory Judgment rendered Oct. 16th 1923.
 Final " " " " Apr. 9th 1924

C.F. 1046 -

