

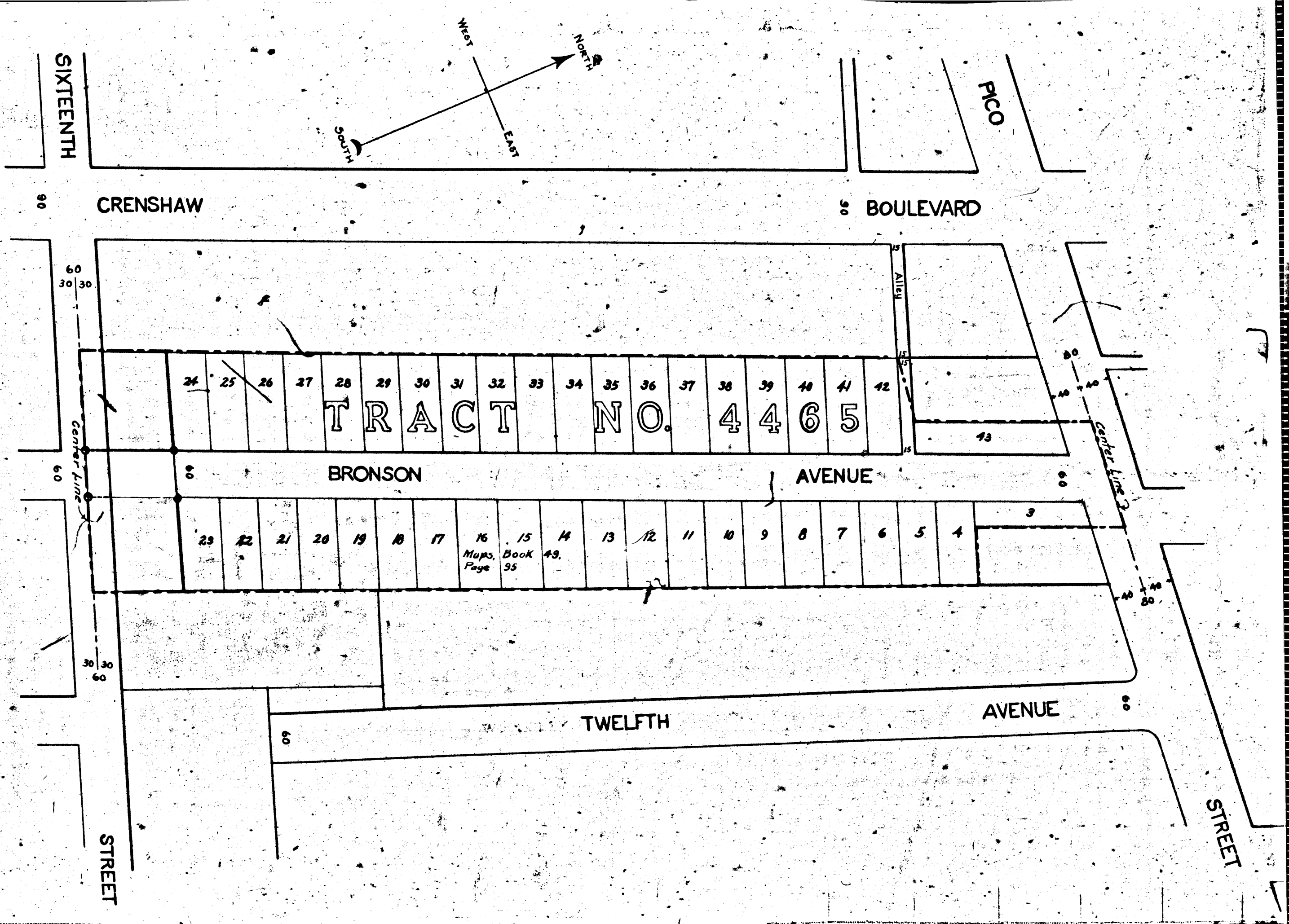
**MAP**  
**SHOWING LAND TO BE CONDEMNED**  
**FOR THE OPENING AND EXTENDING OF**  
**BRONSON AVENUE**  
 BETWEEN  
 ITS TERMINUS, SOUTHERLY OF PICO STREET, AND SIXTEENTH STREET  
 IN THE  
**CITY OF LOS ANGELES, CALIFORNIA**  
 In accordance with Ordinances Nos 43,562 and 46,233 (New Series)  
 John A. Griffin, City Engineer.

Scale - 1 inch = 100 feet  
 Note - Land to be condemned shown colored Red

*Superior Court Case No. 125129*  
*Suit for Condemnation*  
*Filed July 9<sup>th</sup> 1923.*  
*City of Los Angeles Pitff.*  
*vs.*  
*Spires, et. al. Def.*  
*Interlocutory Judgment rendered May 8<sup>th</sup> 1924*  
*Pending May 10<sup>th</sup> 1924*  
*Final Judgment Oct. 16<sup>th</sup> 1924.*

D: 61-263  
 O.R. 3509-343

Sh: 5



104