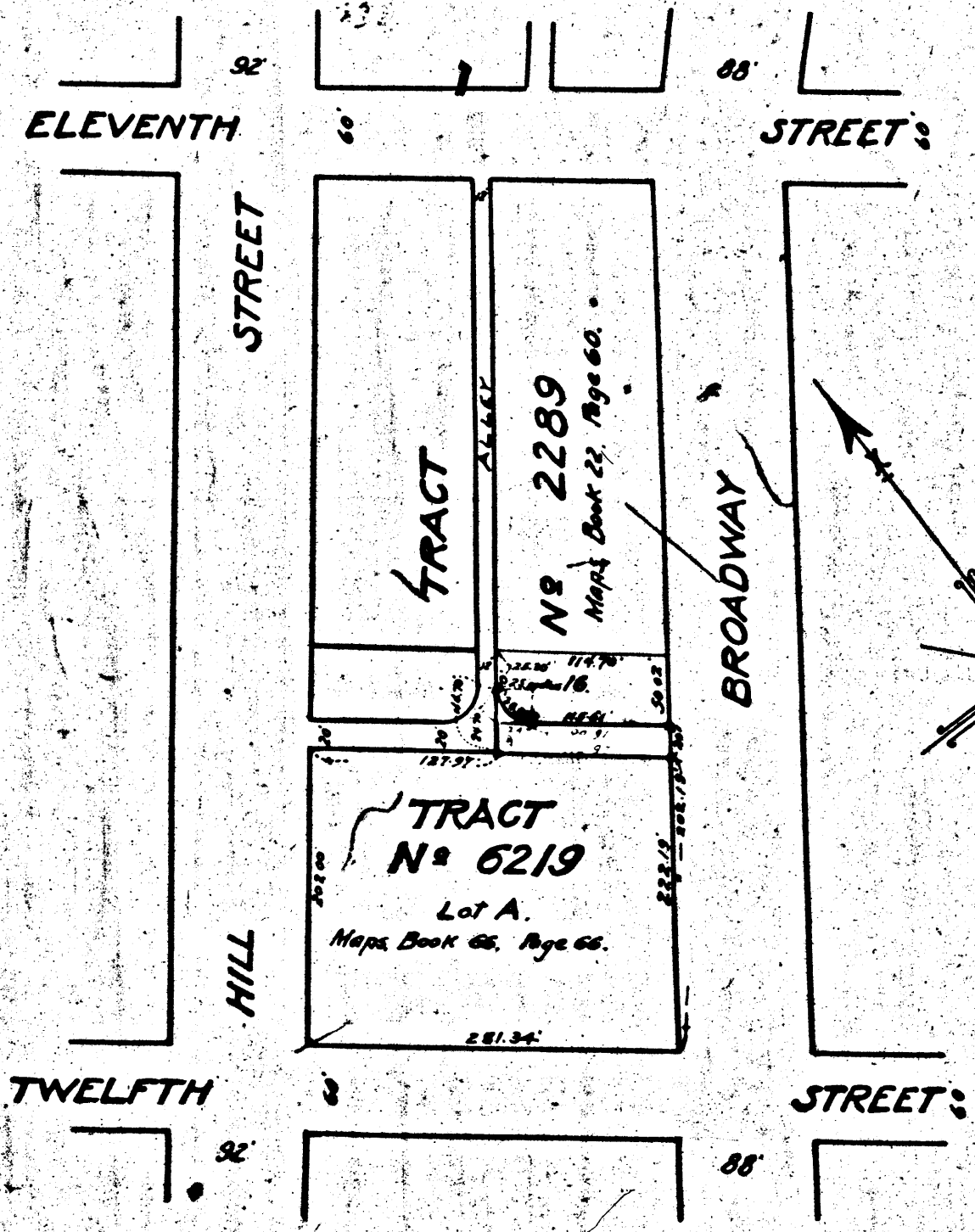


A-1663

A-1663

RETURN TO CITY ENGINEER'S OFFICE
CITY OF LOS ANGELES
PROPERTY OF THE



MAP
 SHOWING THE LAND TO BE CONDEMNED
 FOR THE OPENING AND EXTENDING OF THE FIRST
ALLEY

SOUTHWESTERLY OF ELEVENTH STREET,
 FROM
 BROADWAY TO THE FIRST ALLEY NORTHWESTERLY THEREFROM.
 IN THE
CITY OF LOS ANGELES, CALIFORNIA.

In accordance with Ordinances 46091 and 46459 (New Series)

Scale - 1 inch = 100 feet.

John A. Griffin, City Engineer.

July 1923.

Note: - Land to be condemned shown colored red.

Superior Court Case No. 127718

Suit for Condemnation

Filed Aug. 24, 1923.

City of Los Angeles, Plff.

Vs.

T. I. T. Co., a corp., et al. Def.

Pending May 10th 1924

Interlocutory Judgment July 2nd 1924 **A-1663**

Pending for appeal

Dismissed as moot, 1924

A-1663

RETURN TO CITY ENGINEER'S OFFICE
CITY OF LOS ANGELES
PROPERTY OF THE

A-1663

1049