

Index #3

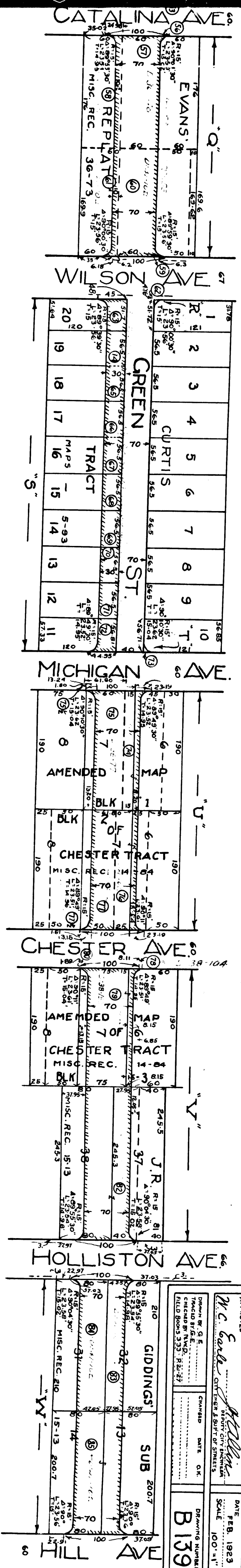
Superior Court Case No. 119583
Suit for Condemnation
Filed Mar 28th 1923
City of Pasadena, Plff.
Vs.
Stratton et al, Def.

Interlocutory Judgment rendered on parcels 14, 13, 11, 143, 737, 83, 45, 69, 36, 58, 59, 29, 23, 27, 25, 20, 18, 5, 60, 48, 32, 71, 82, 84, 85, 10, 15, 19, 21, 31, 40, 65, 24, 26, 49, 55, 61, 63, 76, 66, 71, 91, 612, 22, 30, 31, 38, 39, 41, 41.5, 53, 56, 59, 61, 73, 77, 80, 81, 33, 86
Final Judgment rendered on parcels 1, 5, 7, 10, 11, 13, 14, 15, 18, 19, 20, 21, 23, 24, 25, 26, 27, 29, 32, 34, 35, 3, 37, 40, 43, 18, 45, 49, 55, 58, 60, 61, 63, 64, 65, 66, 67, 68, 69, 70, 71, 72, 76, 77, 79, 82, 83, 84, 85, 9, 12, 16, 74, 22, 30, 31, 38, 39, 41, 44, 50, 53, 56, 59, 62, 73, 77, 80, 81, 33.

Final Judgment in favor of Plff. as to parcels 22, 36, 31, 41, 44, 49, 50, 51, 52, 54, 55, 57, 58, 59, 60, 61, 62, 63, 64, 65, 66, 67, 68, 69, 70, 71, 72, 76, 77, 79, 82, 83, 84, 85, 9, 12, 16, 74, 22, 30, 31, 38, 39, 41, 44, 50, 53, 56, 59, 62, 73, 77, 80, 81, 33, rendered Feb. 20, 1924
Dis. 100, 28, 282-100
Final judgment in favor of Plff. as to parcels 1, 5, 33, rendered April 16, 1924
Dis. 100, 28, 282-100
Final judgment in favor of Plff. as to parcels 912, 16, 74, rendered Feb. 15, 1924
Dis. 100, 28, 282-100
Final judgment in favor of Plff. as to parcels 15, 19, 20, 21, 23, 24, 25, 26, 27, 29, 32, 34, 35, 3, 37, 40, 43, 18, 45, 49, 55, 58, 60, 61, 63, 64, 65, 66, 67, 68, 69, 70, 71, 72, 76, 77, 79, 82, 83, 84, 85, 9, 12, 16, 74, 22, 30, 31, 38, 39, 41, 44, 50, 53, 56, 59, 62, 73, 77, 80, 81, 33, rendered Dec. 31, 1925
Dis. 100, 28, 282-100

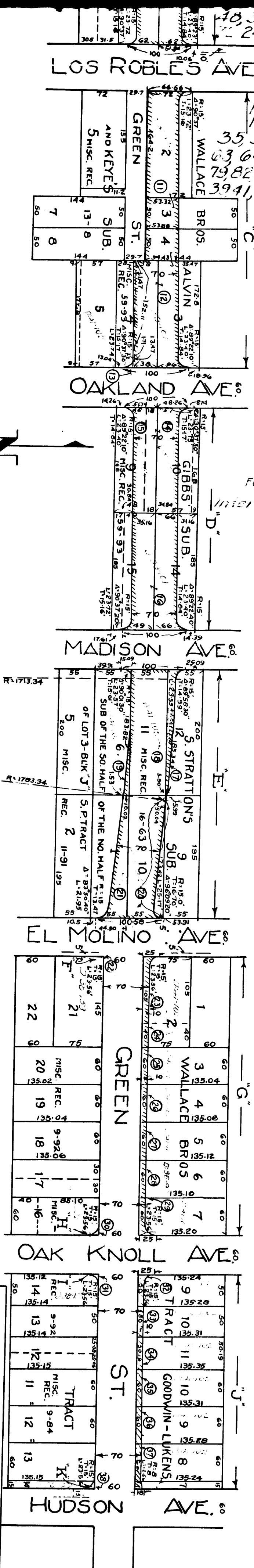
For parcels 2, 3, 4 see C.F. 11020
Inter-Judg. on 6 March 31, 1924
Pending Feb. 18th 1925
Pending May 1st 1926

C.F. 110511



NOTE:-
 LAND TO BE ACQUIRED FOR THE OPENING, WIDENING & EXTENDING OF
 GREEN ST. FROM MARENGO AVE TO HILL AVE. SHOWN BY HATCHER
 BORDER LINE

EXHIBIT "B".



Final Judgment rendered on
 parcels 1, 5, 7, 10, 11, 13, 14, 15, 18,
 19, 20, 21, 23, 24, 25, 26, 27, 29, 32, 34,
 35, 37, 40, 43, 44, 45, 49, 55, 59, 60, 61,
 63, 64, 65, 66, 67, 68, 69, 70, 71, 72, 76, 77,
 79, 82, 83, 84, 85, 9, 12, 16, 74, 22, 30, 31, 38,
 39, 41, 44, 50, 53, 56, 59, 62, 73, 77, 80, 81, 83.

Final Judgment in favor of Plaintiff as to parcels
 2, 3, 4, 6, 8, 10, 11, 12, 13, 14, 15, 16, 17, 18,
 rendered Feb. 10, 1924.

Final Judgment in favor of Plaintiff as to parcels
 19, 20, 21, 22, 23, 24, 25, 26, 27, 28, 29, 30,
 rendered Feb. 10, 1924.

Final Judgment in favor of Plaintiff as to parcels 31,
 32, 33, 34, 35, 36, 37, 38, 39, 40, 41, 42, 43,
 rendered Feb. 10, 1924.

For parcels 2, 3, 4 see C.F. 1102
 Inter-Judgment March 31, 1924
 Pending Feb. 18, 1925
 Pending May 1st 1926

CITY OF PASADENA
 OFFICE OF CITY ENGINEER & SUPERINTENDENT OF STREETS

OPENING, WIDENING AND EXTENDING
 OF
 GREEN STREET
 FROM
 MARENGO AVE TO HILL AVE.

APPROVED
 M.C. Egan
 CHIEF ENGINEER & SUPERINTENDENT OF STREETS

DATE FEB. 1923
 SCALE 100'-1"

DRAWING NUMBER
 B 139

C.F. 110511

2

INDEX #8

