

A-1735

A-1735

North

OFFICE OF THE CITY ENGINEER
CITY OF LOS ANGELES
PLATE OF THE

MAP
SHOWING

LAND TO BE CONDEMNED FOR THE
WIDENING OF

SLAUSON AVENUE

BETWEEN

WEST BOULEVARD AND THE WESTERLY BOUNDARY
OF THE CITY OF LOS ANGELES IN THE CITY OF LOS ANGELES
STATE OF CALIFORNIA.

In accordance with Ordinance No. 45974 (New Series)

Scale - 1 inch = 100 feet

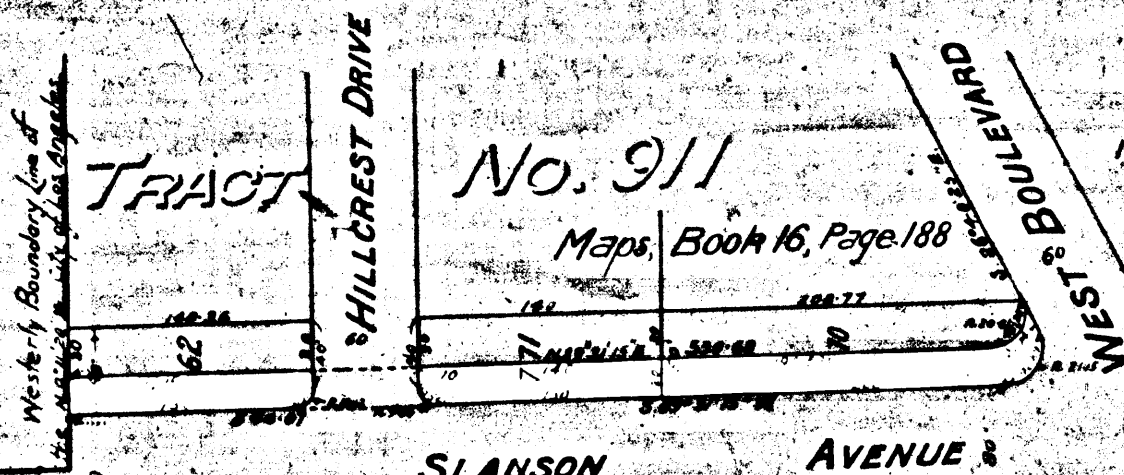
John A. Griffin, City Engineer

Sept. 1923

NOTE - Land to be condemned shown colored Red

Superior Court Case No. 130831
Suit for Condemnation
Filed Nov. 9, 1923
City of Los Angeles, Plff.
Vs.
Will H. Carleton, et al., Def.

Pending Nov. 15, 1923
Case of Calendar Apr. 28th 1924.
Judgment of Dismissal July 1st 1924.



A-1735

A 1735

A-1735

OFFICE OF THE CITY ENGINEER
CITY OF LOS ANGELES
PLATE OF THE

