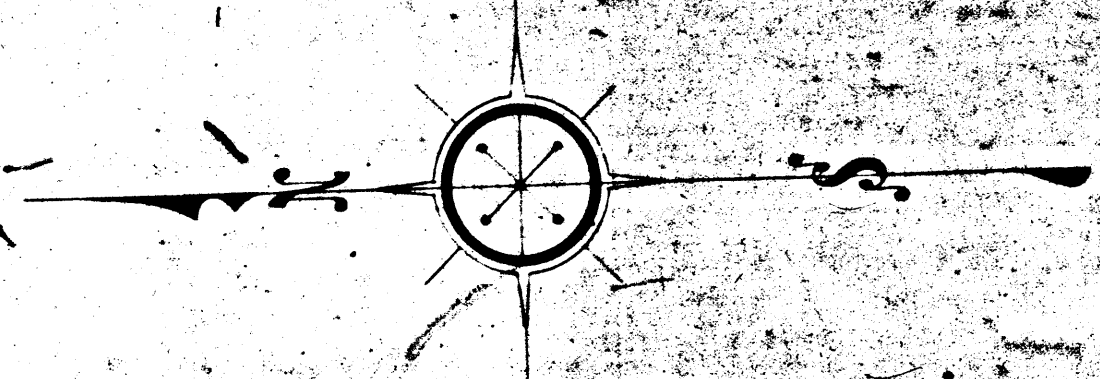


Superior Court Case No. 130704.
 Suit for Condemnation
 Filed Nov. 10, 1923
 County of Los Angeles, Plff.
 Vs.
 Bertha S. Hays, et al., Def.
 Pending Nov. 16, 1923
 Pending May 10th 1924
 Pending Feb. 18th 1925
 Pending May 1st 1926
 Apr. 1, 1927
 Final judgment in favor of Plff. as per
 Map, rendered September 7th 1928
 D:68-179, O.R. 7311-67

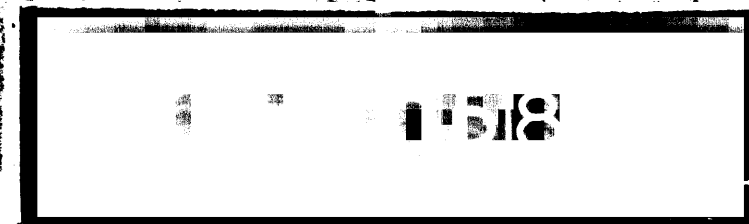


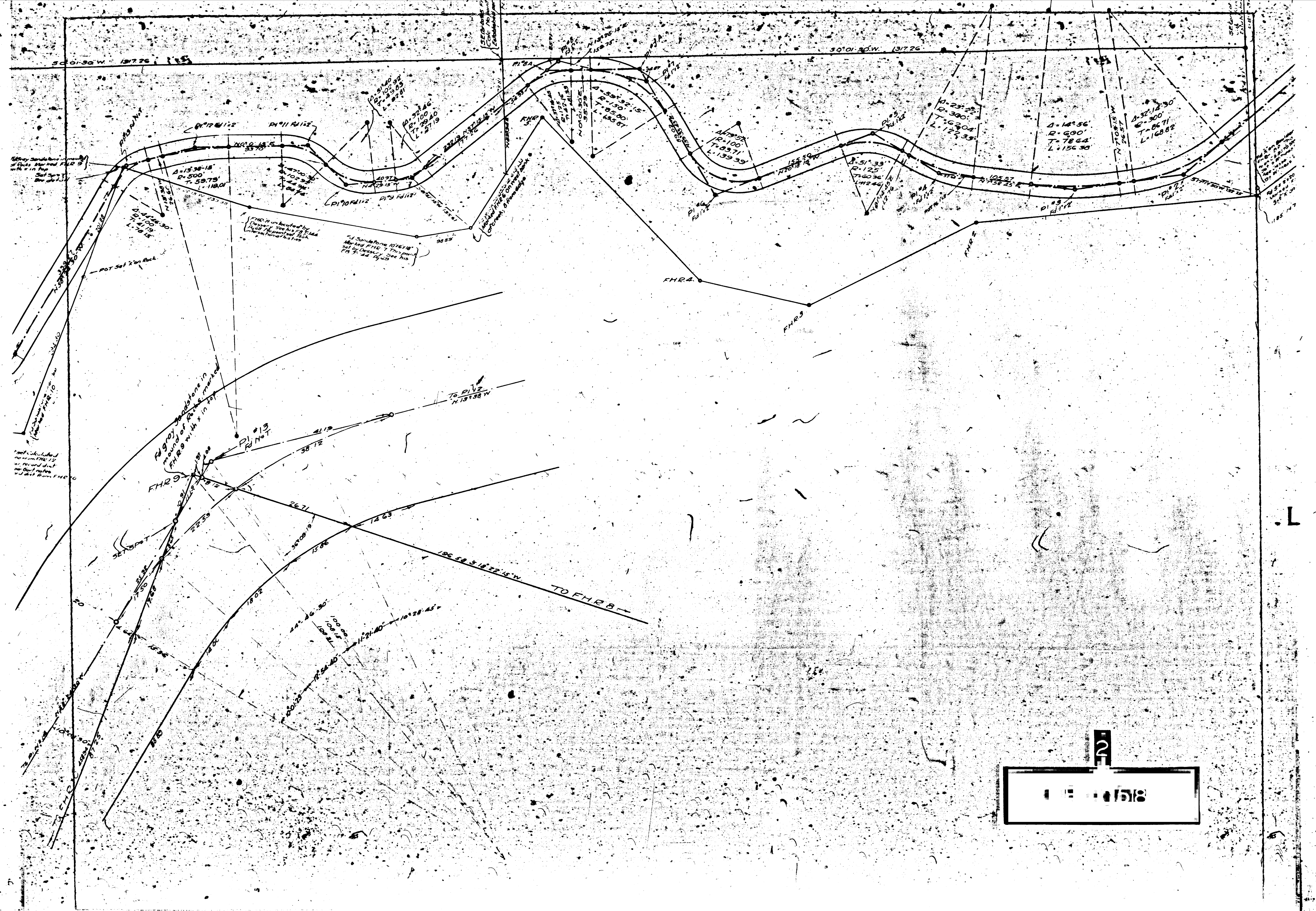
MAP OF
LAS FLORES CANYON ROAD
 FROM
 MALIBU ROAD
 TO
 SOUTH LINE OF TRACT No. 2462

COUNTY SURVEYORS MAP No. 8617.
 SCALE: 1 INCH = 80 FEET

Surveyed By Los Angeles Road Dept. 1923
 Map Traced By County Surveyor 1923
 J.E. Rockhold, County Surveyor

Road Dept. Field Book FR. 181
 Map By Road Dept.
 Traced By R. R. Tylon
 Checked By Road Dept.





2
10/15/18

65° 10' 57.00
5.96
31.78

Fd Sandstone 516.22
Marked P.C. on So. X in top
Mound of Rocks to South

$\Delta = 10^{\circ} 16' 15"$
 $R = 122.5'$
 $T = 110.09'$
 $L = 219.59'$

Fd Sandstone CC on West
W.C. 26/25 on East
4712 East of Stone Mt. Sta
4740 E of 2nd Line

Fd Sandstone 750.16
Marked F.H.E. 12 on West
Set 1st in canyon

Refer Sandstone in mound
of Rocks Marked F.H.E. D
with * in top

$\Delta = 15^{\circ} 38' 18"$
 $R = 500'$
 $T = 59.78'$
 $L = 117.18'$

$\Delta = 10^{\circ} 59' 30"$
 $R = 472.10'$
 $T = 406.1'$
 $L = 81.09'$

$\Delta = 10^{\circ} 58' 45"$
 $R = 600'$
 $T = 579'$
 $L = 114.28'$

$\Delta = 23^{\circ} 51' 28"$
 $R = 100'$
 $T = 105.63'$
 $L = 208.24'$

F.H.R. 11 - No point and calculated
Est by producing the curve F.H.R. 12
through "K" on hauler, record dist
from "K" on hauler per foot notes
which checks record dist from F.H.R. 11

F.H.R. 9
Marked F.H.R. 9 in top
with * in top

about 200 ft
W.P. on E
to South
Intersect W.P.
on W. Road
to Sandstone 750.16

W.P. on East side
of road
to Sandstone 750.16

360 ft of 2nd line on W Line 54 76.
Fd Sandstone 516.22 Marked in M
Station No. 20 on east
Other markings on West side but
not decipherable This is Govt closing
corner and is referred to by Dessery
with Fd Field # 516.22

Fd Sandstone 750.16
Marked F.H.E. 12 on West
Set 1st in canyon
Set 2nd in canyon
Set 3rd in canyon
Set 4th in canyon
Set 5th in canyon
Set 6th in canyon
Set 7th in canyon
Set 8th in canyon
Set 9th in canyon
Set 10th in canyon

RAVENS HOLE



101
10518

16 Sandstone 8'x12'
Marked with 1 cross on S and
1 cross on E. Mound of Rocks to West
N.E. Cor. Sec. 26

16 Sandstone 8'x20'
Marked 1/4 on North
Mound of Rocks to North
1/4 Cor.

16 Sandstone 6'x16'
Marked No. 8 on North
R. Co. on East

16 Sandstone marked CC on West
4712 East of Shina Mtd. 1/4
4740 E. of Shina

16 Sandstone marked CC on West
4712 East of Shina Mtd. 1/4
4740 E. of Shina

16 Sandstone 7'x16'
Marked F.H.R. 9
Setlet in center

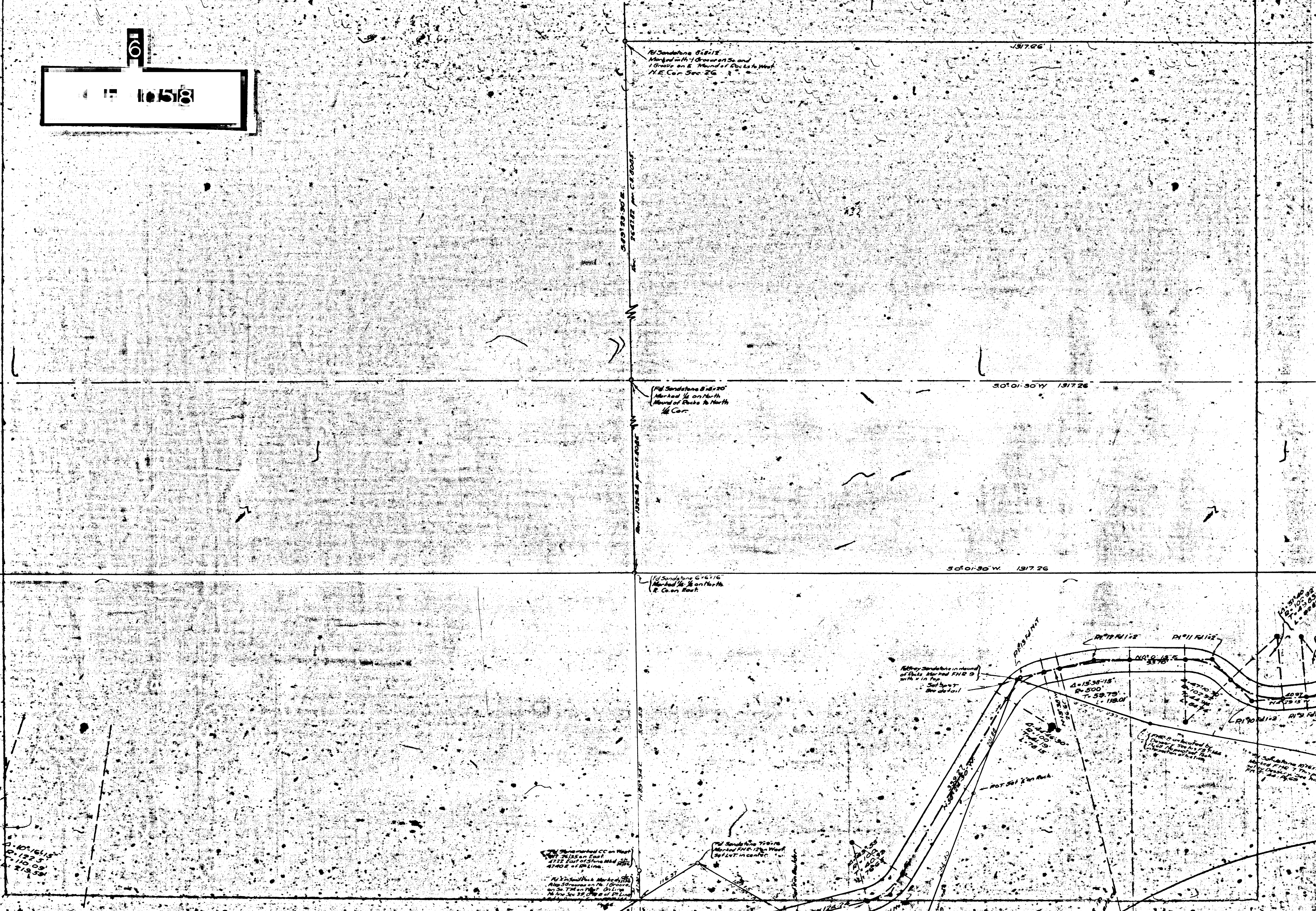
16 Sandstone in mound
of Rocks marked F.H.R. 9
Setlet
See detail

16 Sandstone marked F.H.R. 9
Setlet in center

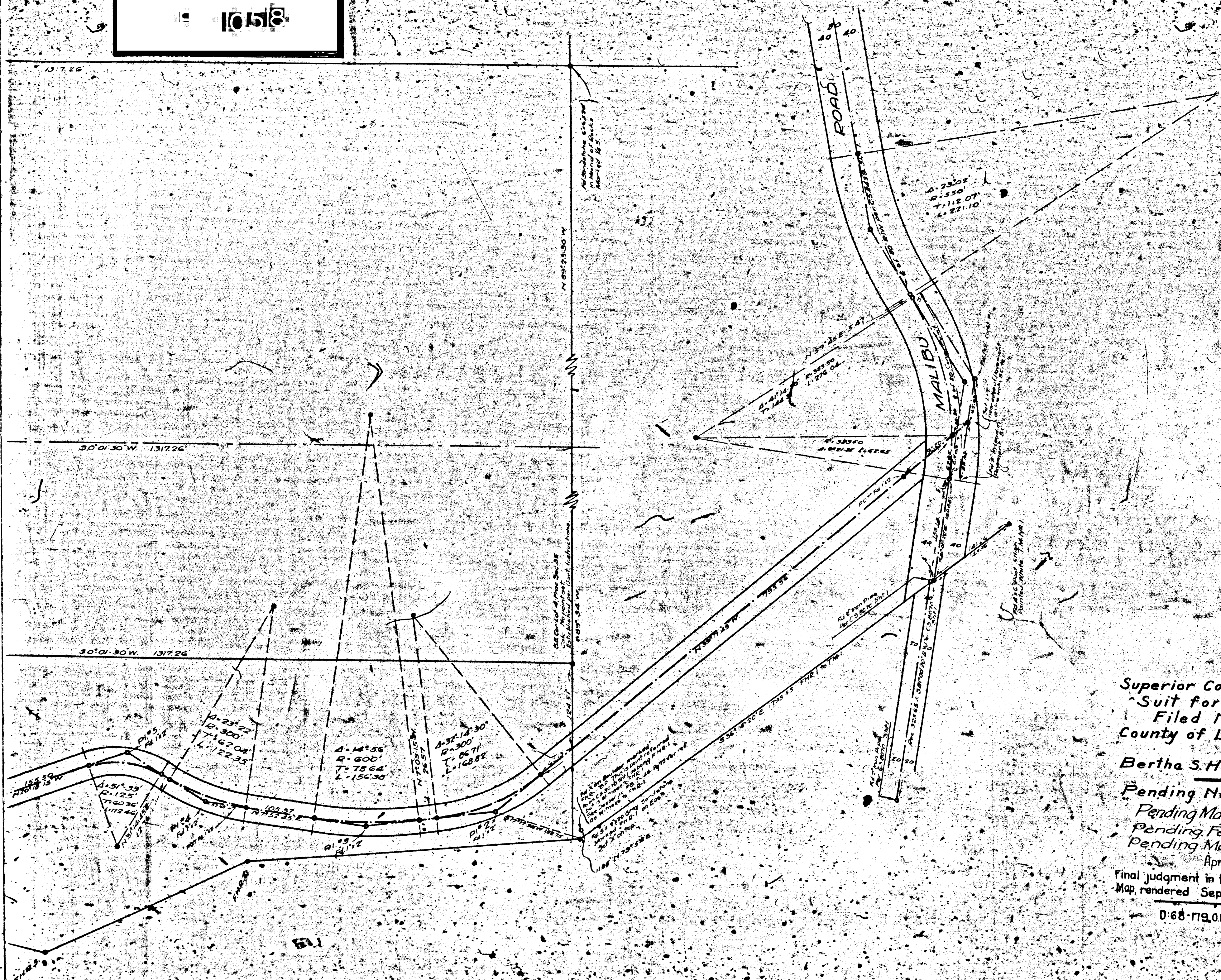
16 Sandstone marked F.H.R. 9
Setlet in center

16 Sandstone marked CC on West
4712 East of Shina Mtd. 1/4
4740 E. of Shina

16 Sandstone marked CC on West
4712 East of Shina Mtd. 1/4
4740 E. of Shina



101518



Superior Court Case No. 130704
Suit for Condemnation
Filed Nov. 10, 1923
County of Los Angeles, Plff.
Vs.
Bertha S. Hays, et al., Def.
Pending Nov. 16, 1923
Pending May 10th 1924
Pending Feb. 18th 1925
Pending May 15th 1926
Apr. 1, 1927
Final judgment in favor of Plff. as per
Map, rendered September 7th 1928
D:68-179, OR 7311-67