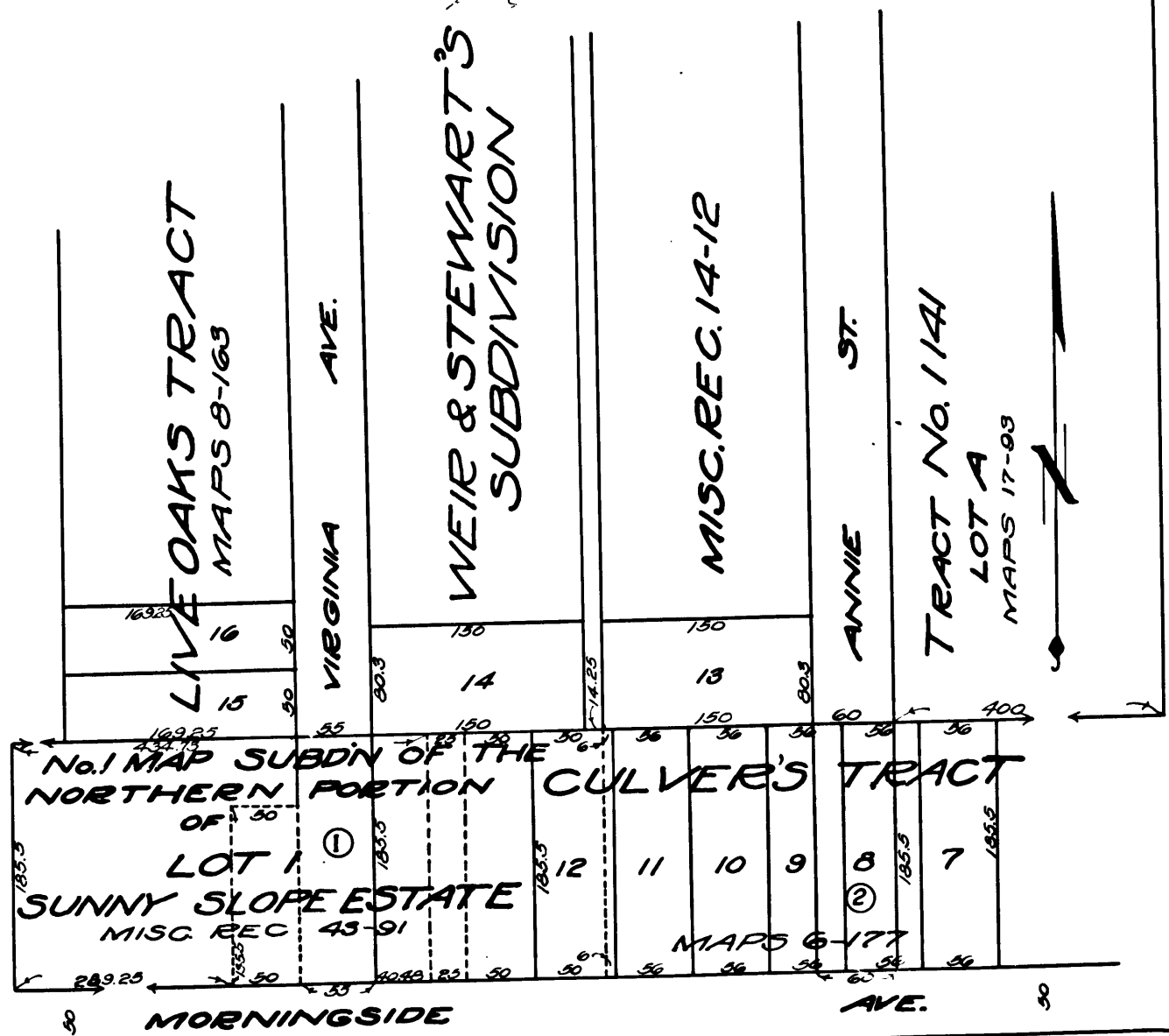


Superior Court Case No. 132994
 Suit for Condemnation
 Filed Nov. 30 1923
 City of Pasadena Plff.
 Vs.
 Clara E. Gray et al. Def

Pending Dec 12 1923
 Interlocutory Judgment rendered May 7th 1924
 Pending Feb. 13th 1925

Final judgment in favor of plaintiff, as per map,
 rendered July 1, 1925.

D. 44-293 O.R. 5154-45
 D. 51-7 Cert. M. 7425



NOTE: Shaded portion shows land to be Condemned

EXHIBIT "C"

DRAWN BY I. E. S. CHECKED BY A. F. B. FIELD BOOKS APPROVED R. C. EARL CITY ENG' & Supt. OF STREETS	CITY OF PASADENA OFFICE OF CITY ENGINEER & SUPERINTENDENT OF STREETS PROPOSED OPENING & EXTENDING OF VIRGINIA AVE & ANNIE STREET SOUTHERLY TO MORNINGSIDE AVENUE	DATE OCTOBER 1925 SCALE 1 INCH = 100 FEET DRAWING NUMBER G-174
--	---	--

C.F. 1061 -

Sheet 74