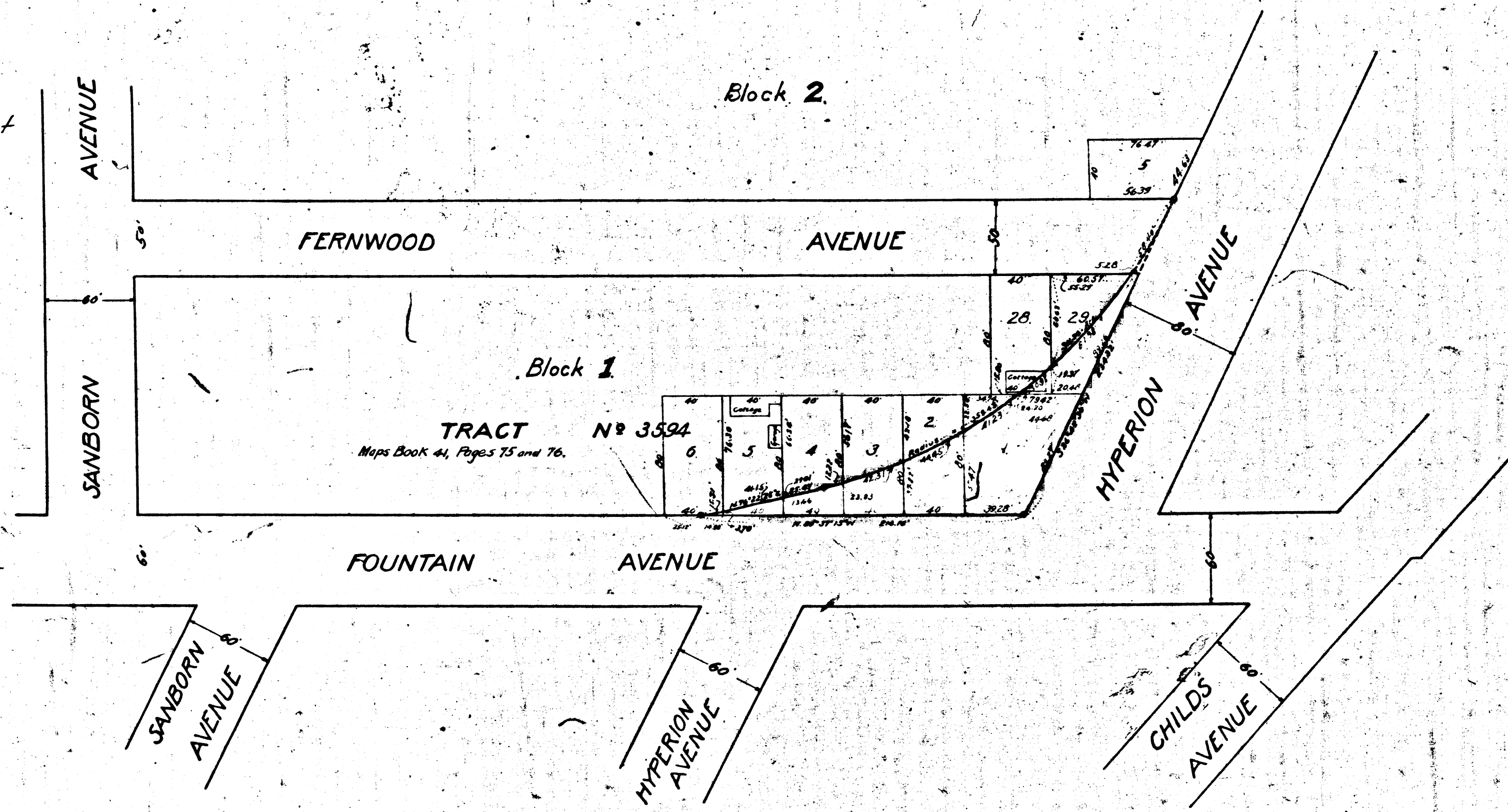
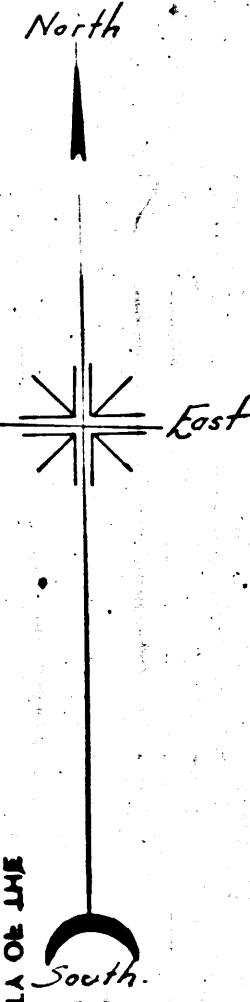


V-100

RECORDS SECTION  
CITY OF LOS ANGELES  
OFFICE OF THE  
CITY ENGINEER

0001-A



# MAP

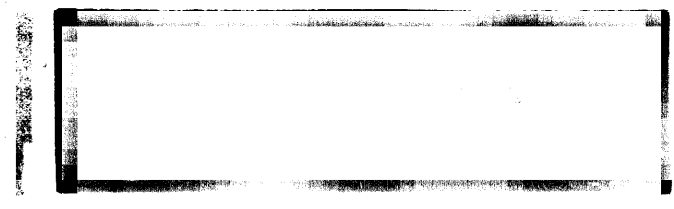
SHOWING THE LAND TO BE CONDEMNED  
FOR THE WIDENING OF  
**HYPERION AVENUE**  
BETWEEN FERNWOOD AVENUE AND FOUNTAIN AVENUE  
IN THE  
CITY OF LOS ANGELES  
CALIFORNIA

IN ACCORDANCE WITH ORDINANCES NO. 45877 and 46615 (New Series)  
SCALE 1"=50'  
JOHNA. GRIFFIN, CITY ENGINEER, JULY 1923.  
LAND TO BE CONDEMNED SHOWN COLORED RED.

Superior Court Case No. 133198  
Suit for Condemnation  
Filed Dec. 4<sup>th</sup> 1923  
City of Los Angeles, Plaintiff  
Vs.  
W.M.A. Brandt et al. Defendant  
Pending Jan. 3<sup>rd</sup> 1924  
Pending May 10<sup>th</sup> 1924  
Interlocutory Judgment Nov. 9<sup>th</sup> 1924  
Pending Feb. 18<sup>th</sup> 1924

Final judgement in favor of Plaintiff, as per map, rendered February 25, 1925  
O.R. 40-201 O.R. 3880 1923.

Sheet 2



11577