

C L U B

P E L L I S S I E R

TRACT NO. 4867

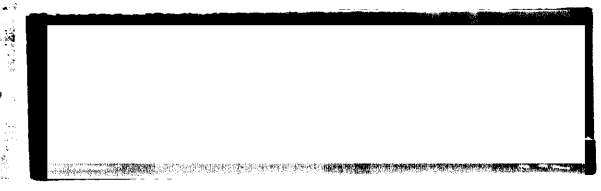
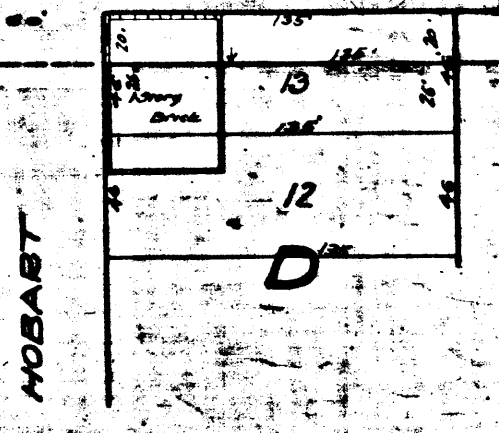
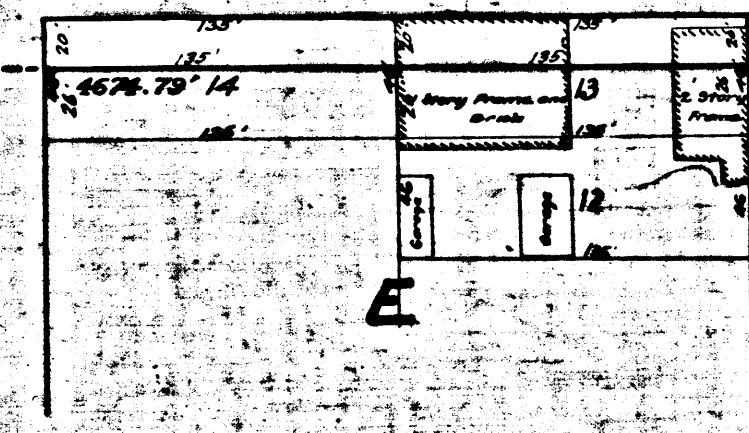
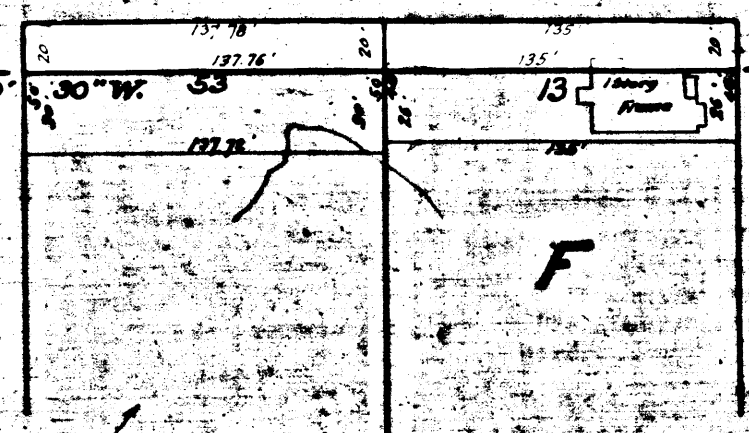
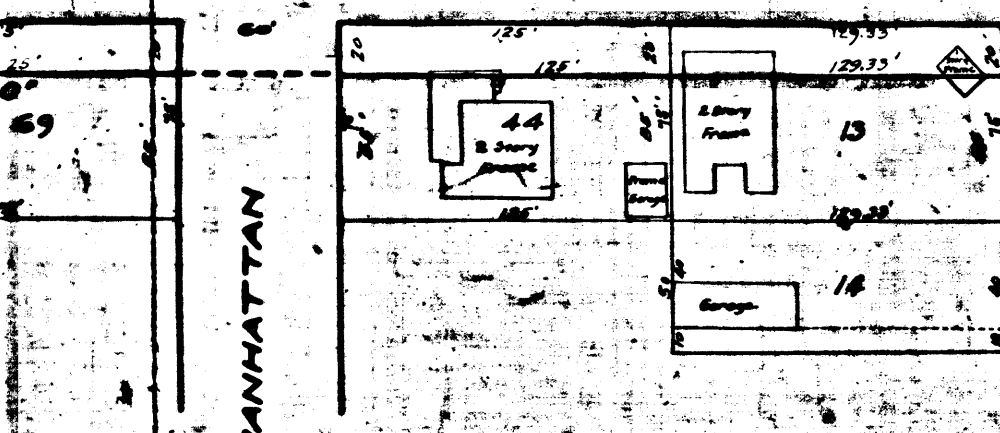
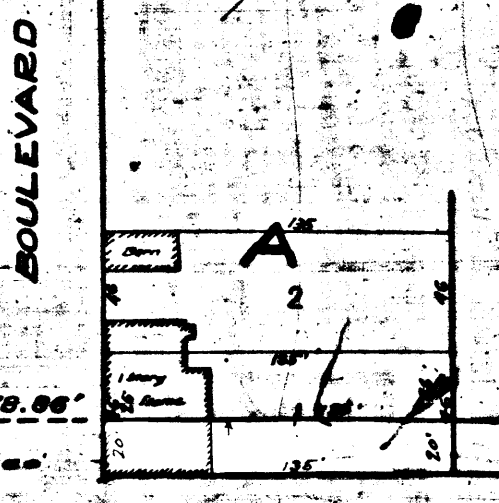
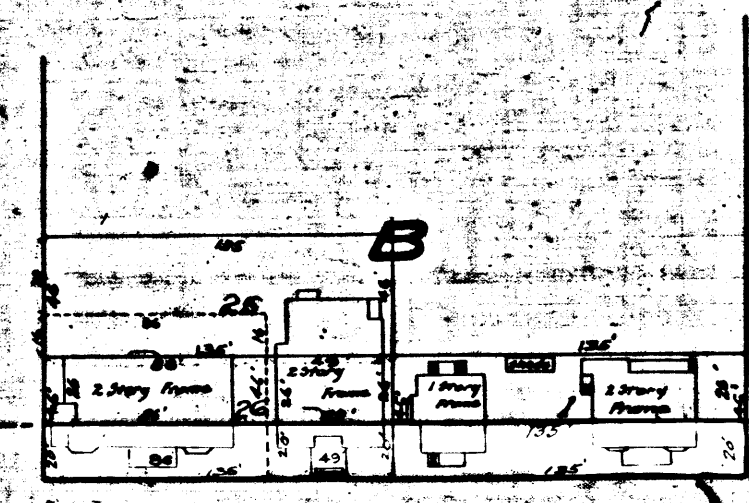
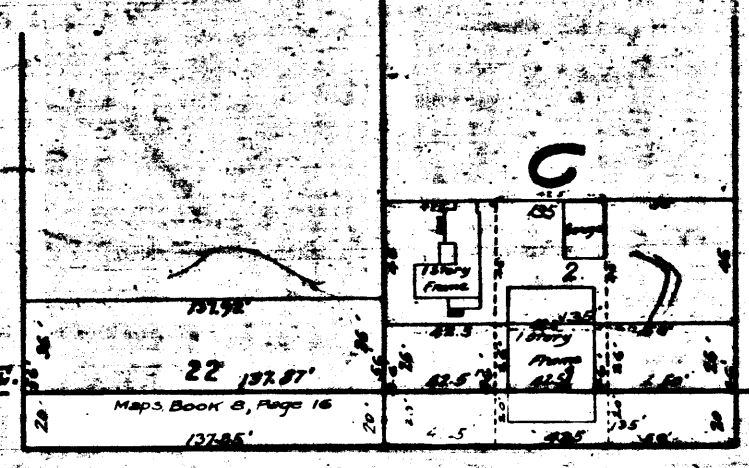
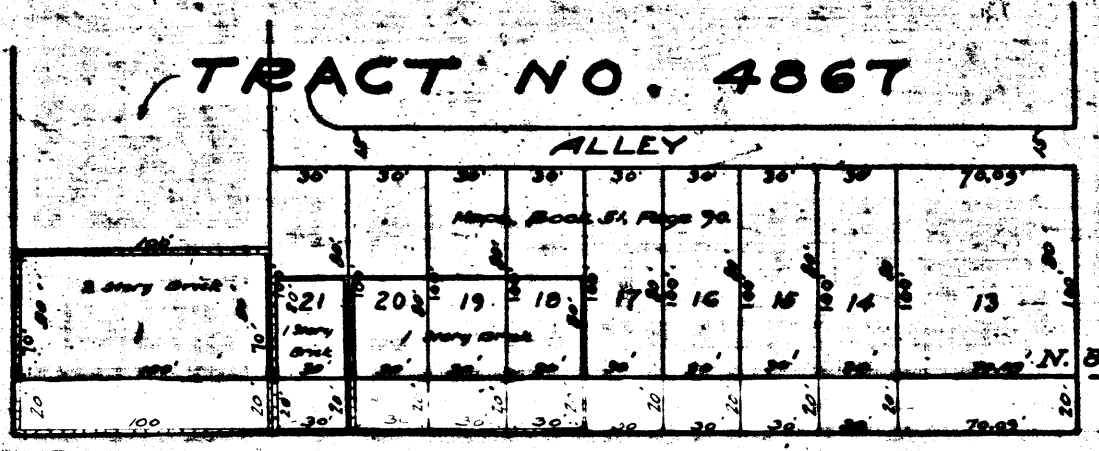
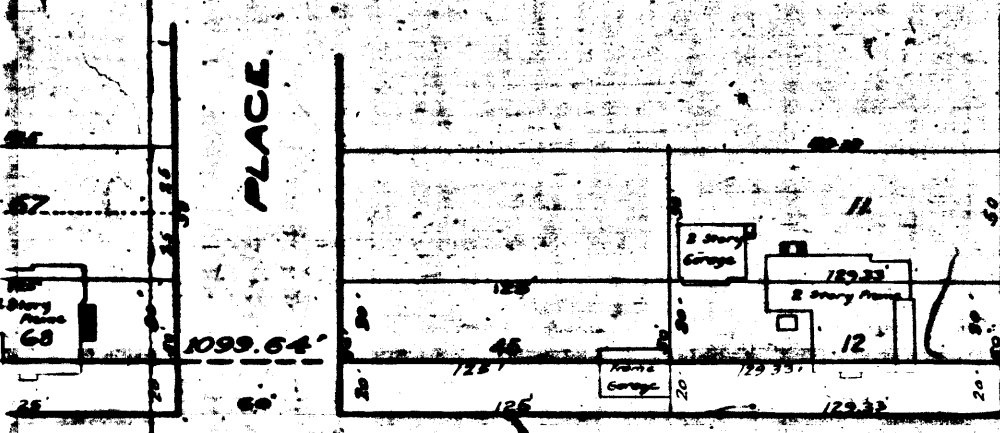
ALLEY

STREET

LEWIS HEIGHTS

TRACT

Miscellaneous Records, Book 48, Page 21.  
 Superior Court Case No. 132710  
 Suit for Condemnation  
 Filed Nov. 24<sup>th</sup> 1923  
 City of Los Angeles Plff.  
 vs.  
 Sadie D. Griffith Abbott et al. Def.  
 Pending Jan. 4<sup>th</sup> 1924  
 Pending Apr. 1<sup>st</sup> 1927  
 Superseded by S.C. No. 243557. See  
 G.F. 1544.





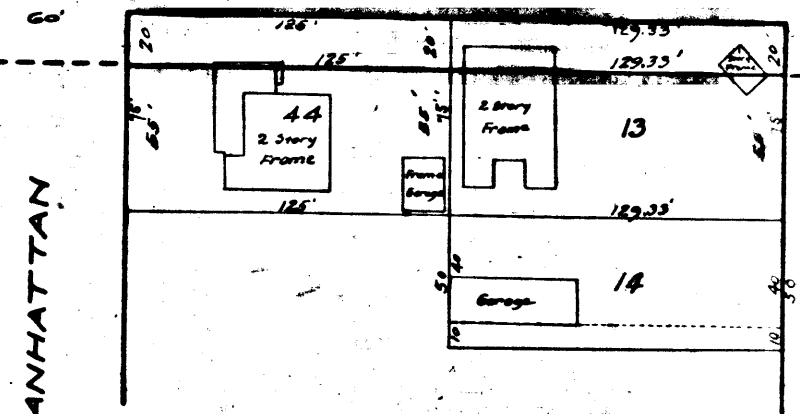
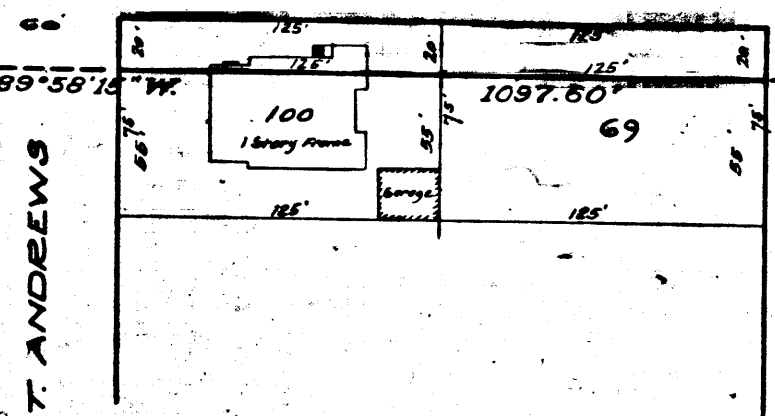
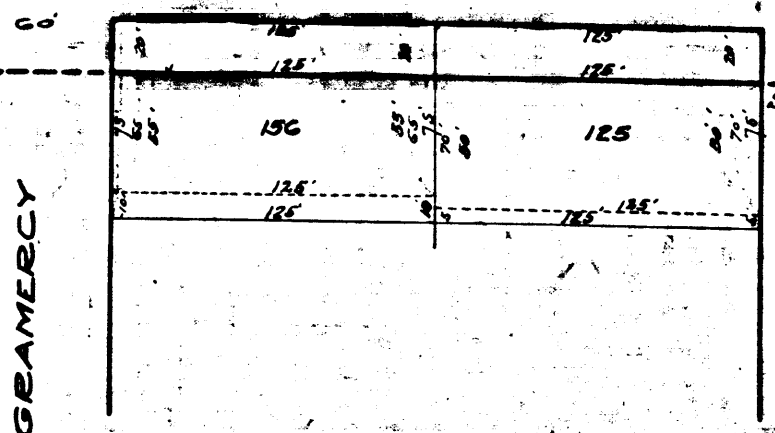
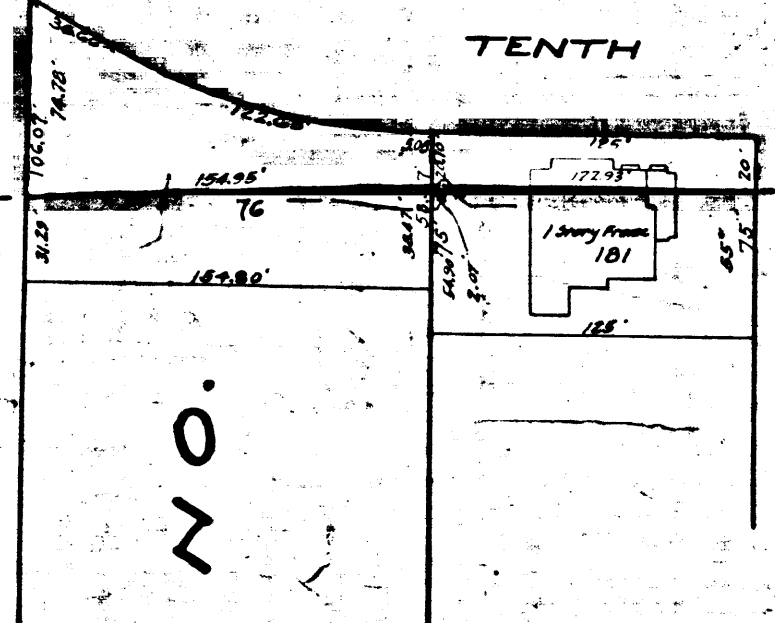
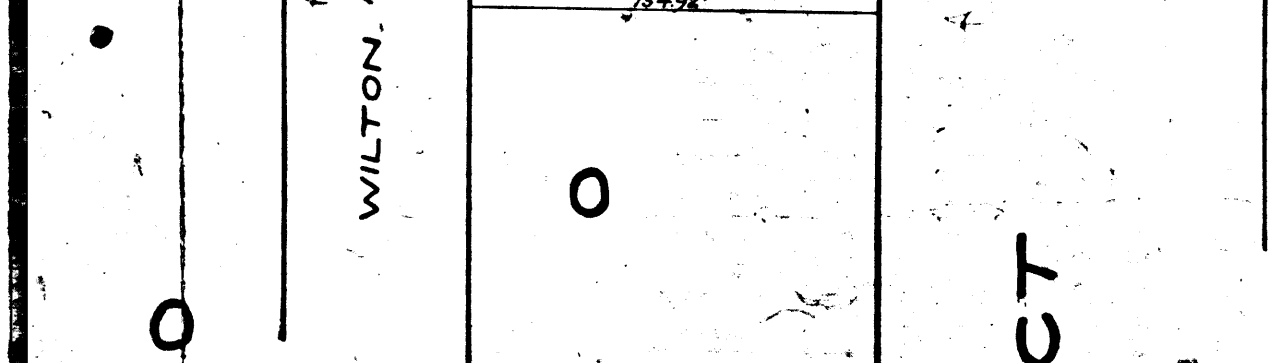
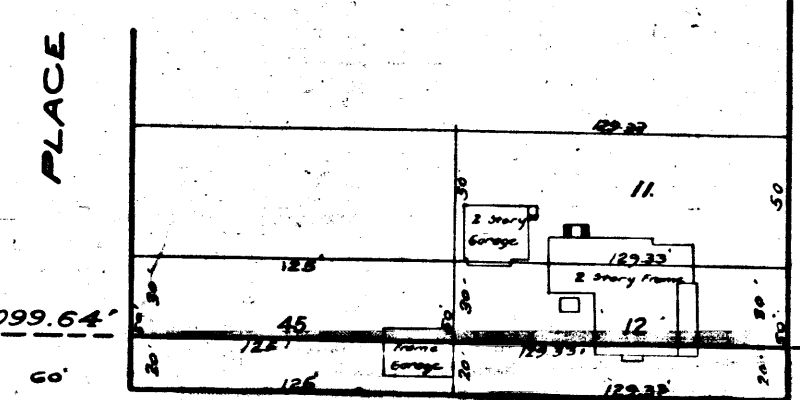
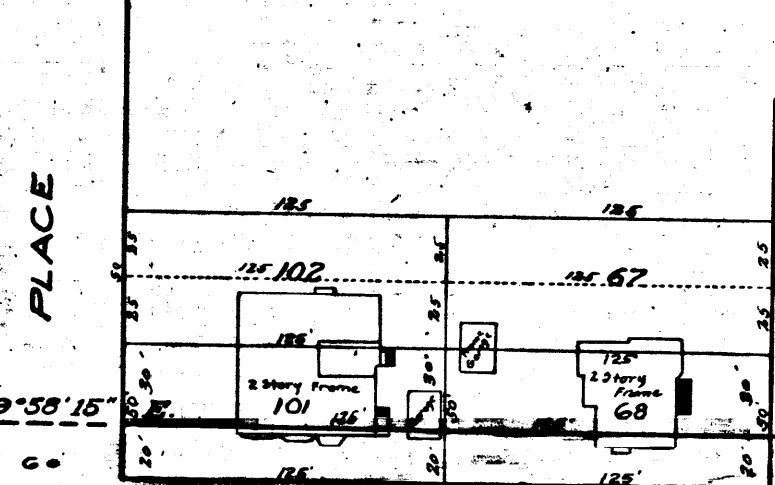
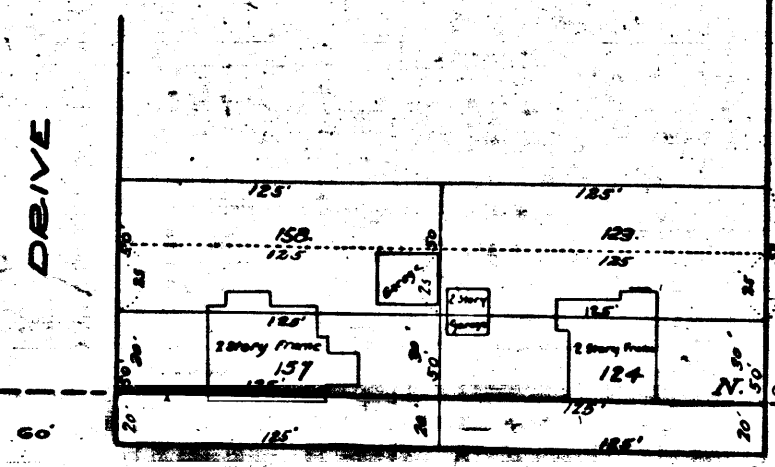
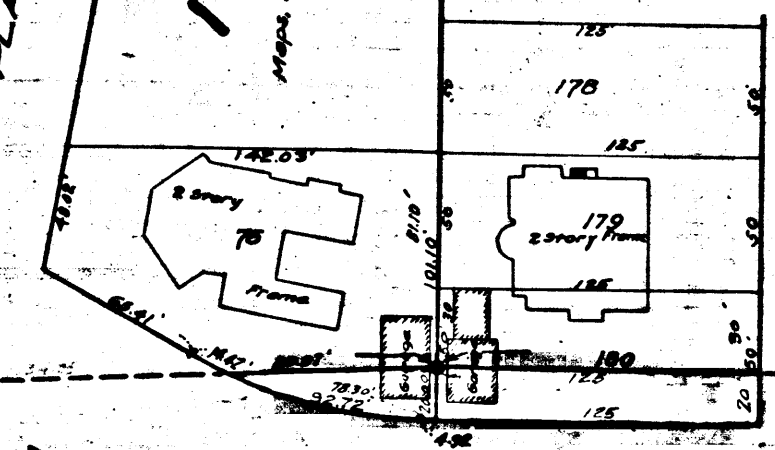
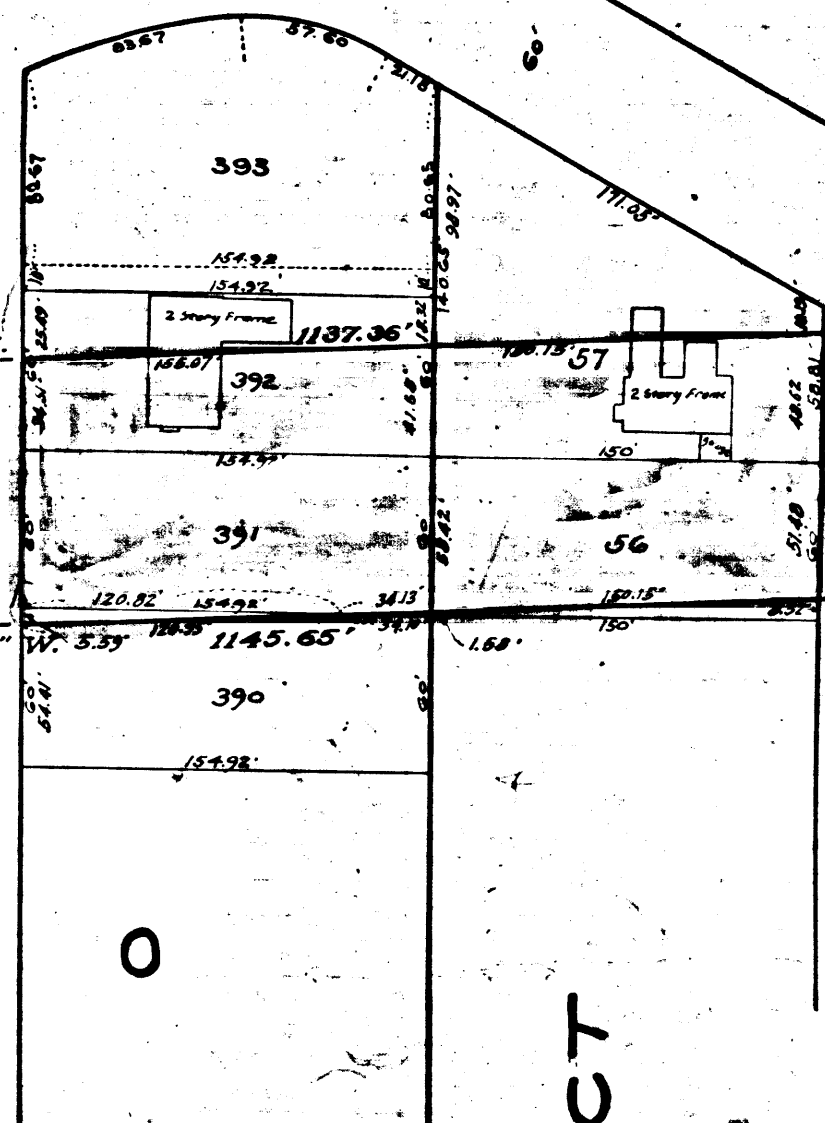
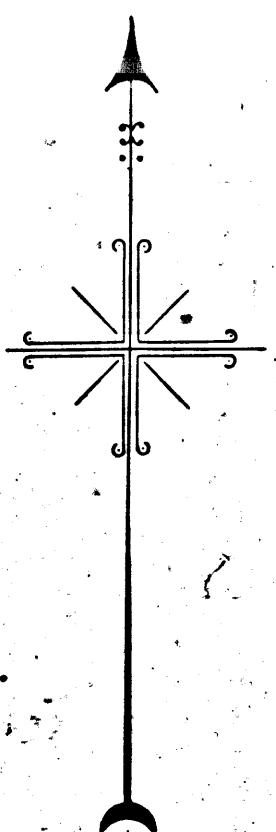
X

PLACE

PLACE

1600.  
Map of Block 20 - Pages 148, 149

C O U N T R Y C L U B



WILTON

TRACT

NO.

GRAMERCY

GRAMERCY

ST. ANDREWS

MANHATTAN

WESTERN AVENUE

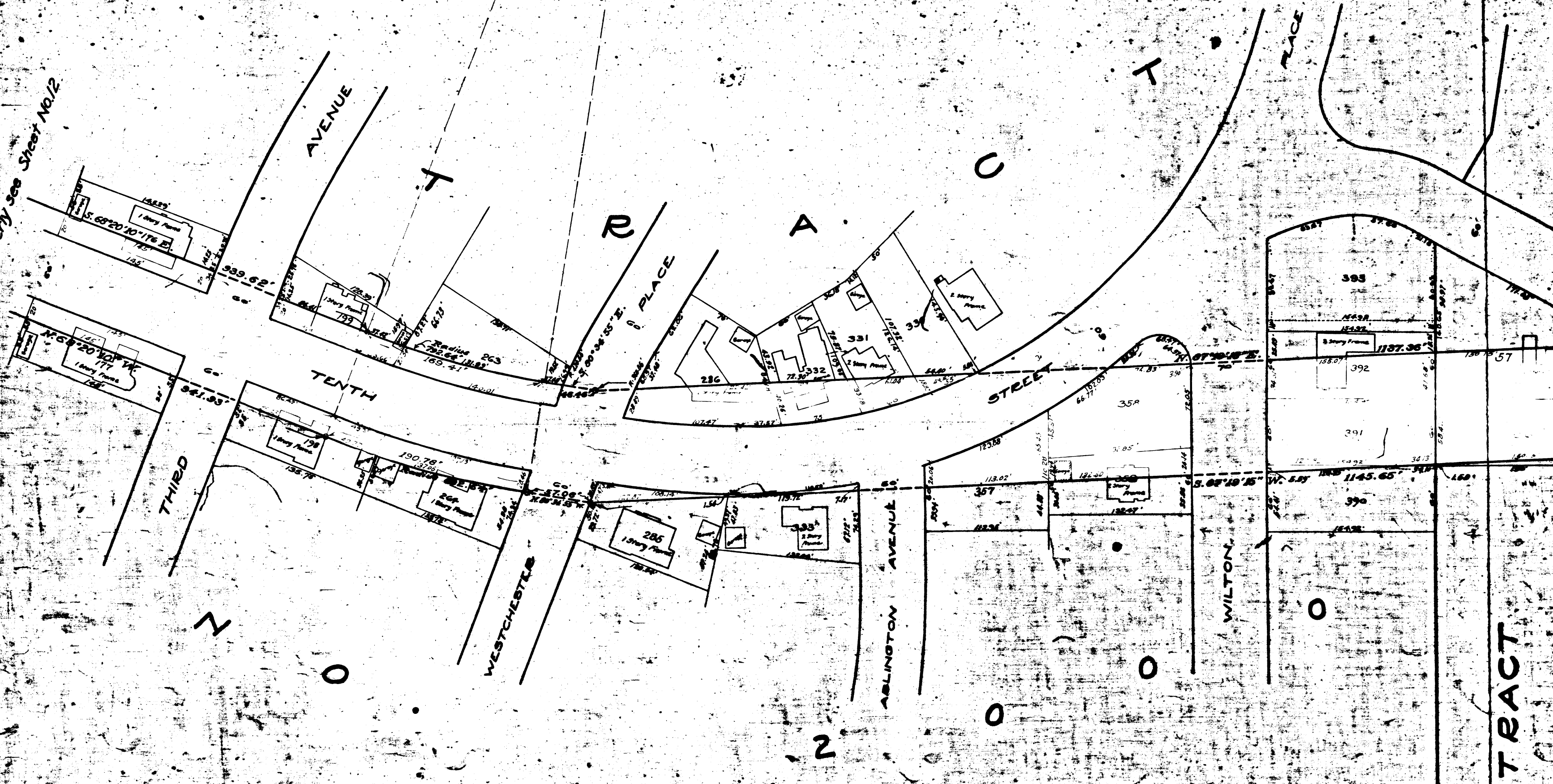
TENTH

H E I G H T S

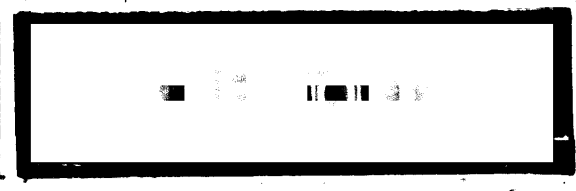
Maps, Book 6, Page 56

4

For Continuation Westery See Sheet No. 12



Maps, Book 27, Pages 122 and 123.



For Continuation Westery See Sheet No. 12

TRACT