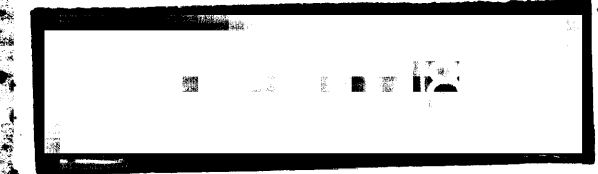
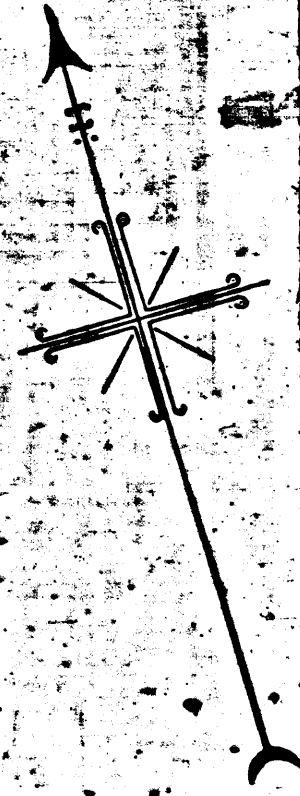
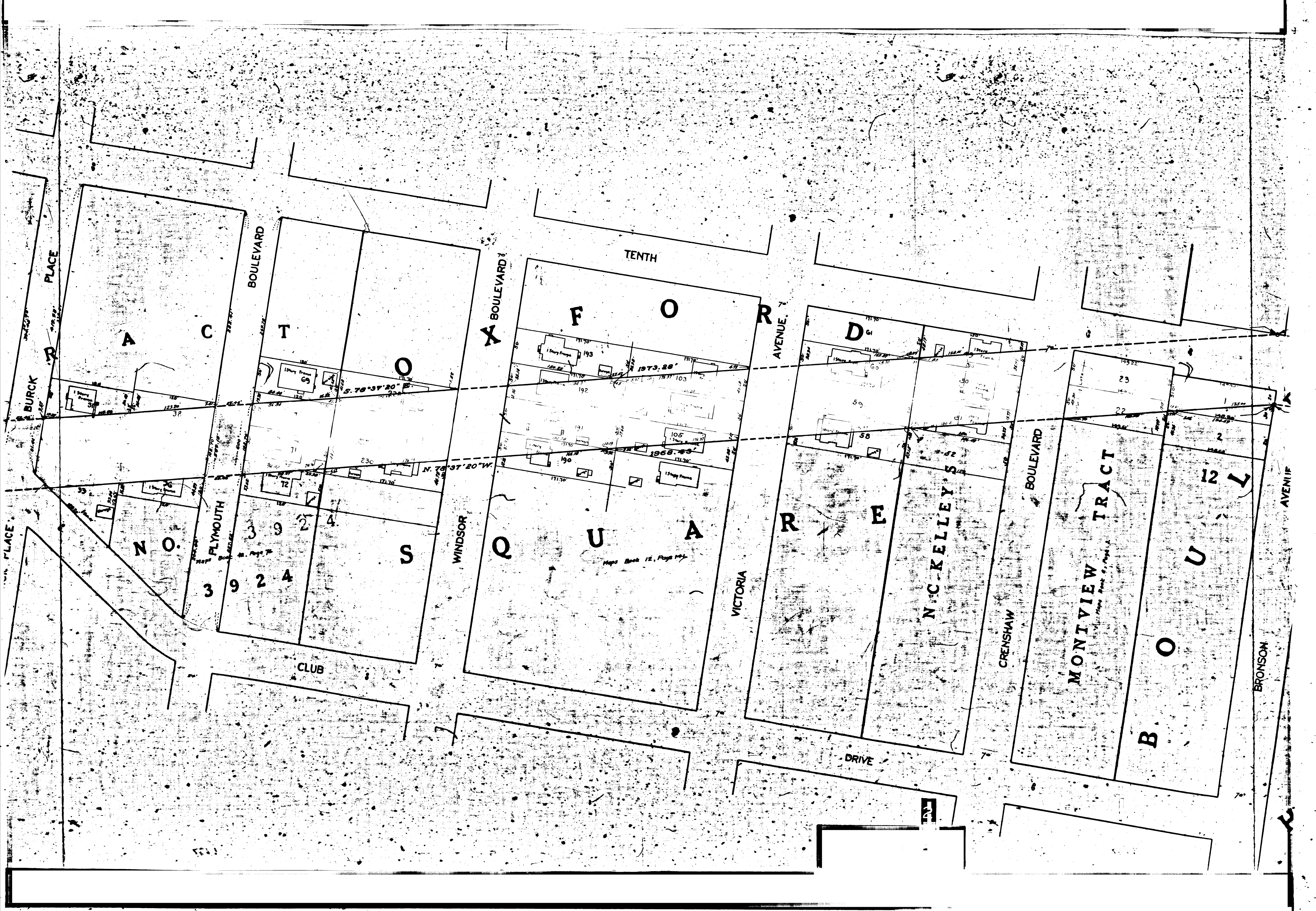


Superior Court Case No. 132710  
 Suit for Condemnation  
 Filed Nov. 24<sup>th</sup> 1923  
 City of Los Angeles, Plff.  
 Vs.  
 Sadie D. Griffith Abbott et al. Def.  
 Pending Jan. 4<sup>th</sup> 1924  
 Pending Apr. 1, 1927  
 Superseded by S.C.C. No. 243537. See  
 C.F. 1544.

For Continuation Eastern - See Sheet No. 11





BURCK PLACE

BOULEVARD

BOULEVARD

TENTH

AVENUE

BOULEVARD

AVENUE

BRONSON

A C

T O

F O

D

N O.

FLYMOUTH

3 9 2 4

3 9 2 4

S

WINDSOR

Q U A

VICTORIA

R E

N. C. KELLEY

CRENSHAW

MONTVIEW TRACT

B O U

12 L

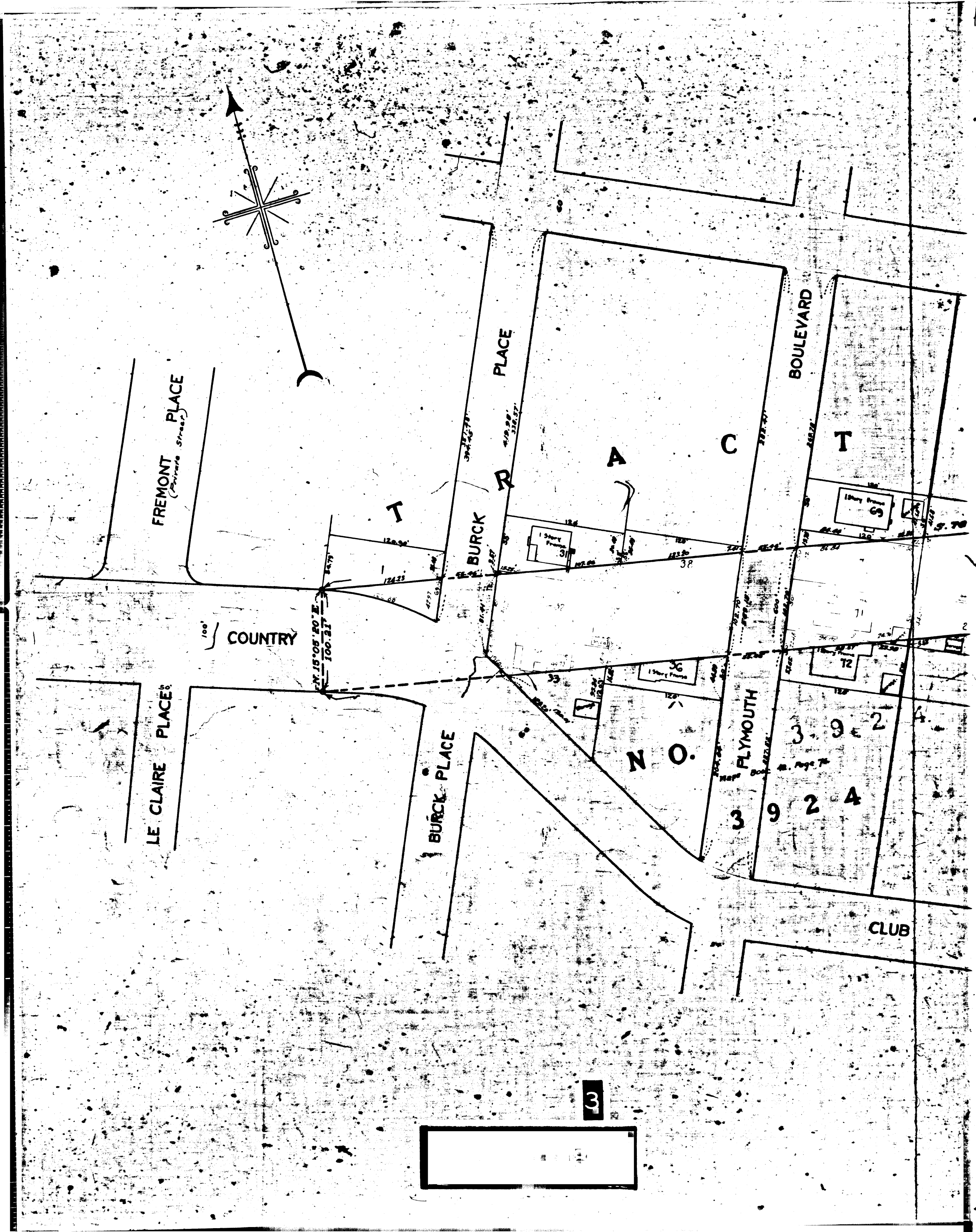
CLUB

DRIVE

S. 78° 37' 20" E  
N. 78° 37' 20" W

Map Book 12, Page 104

15 Story Frame 193  
15 Story Frame 192  
15 Story Frame 191  
15 Story Frame 190  
15 Story Frame 105  
15 Story Frame 103  
15 Story Frame 59  
15 Story Frame 58  
15 Story Frame 57  
15 Story Frame 56  
15 Story Frame 55  
15 Story Frame 54  
15 Story Frame 53  
15 Story Frame 52  
15 Story Frame 51  
15 Story Frame 50  
15 Story Frame 49  
15 Story Frame 48  
15 Story Frame 47  
15 Story Frame 46  
15 Story Frame 45  
15 Story Frame 44  
15 Story Frame 43  
15 Story Frame 42  
15 Story Frame 41  
15 Story Frame 40  
15 Story Frame 39  
15 Story Frame 38  
15 Story Frame 37  
15 Story Frame 36  
15 Story Frame 35  
15 Story Frame 34  
15 Story Frame 33  
15 Story Frame 32  
15 Story Frame 31  
15 Story Frame 30  
15 Story Frame 29  
15 Story Frame 28  
15 Story Frame 27  
15 Story Frame 26  
15 Story Frame 25  
15 Story Frame 24  
15 Story Frame 23  
15 Story Frame 22  
15 Story Frame 21  
15 Story Frame 20  
15 Story Frame 19  
15 Story Frame 18  
15 Story Frame 17  
15 Story Frame 16  
15 Story Frame 15  
15 Story Frame 14  
15 Story Frame 13  
15 Story Frame 12  
15 Story Frame 11  
15 Story Frame 10  
15 Story Frame 9  
15 Story Frame 8  
15 Story Frame 7  
15 Story Frame 6  
15 Story Frame 5  
15 Story Frame 4  
15 Story Frame 3  
15 Story Frame 2  
15 Story Frame 1



FREMONT PLACE  
(Formerly Street)

LE CLAIRE PLACE

BURCK PLACE

PLACE

BURCK

BOULEVARD

PLYMOUTH

COUNTRY

A C

N O.

CLUB

N 15° 05' 20" E  
100.31'

