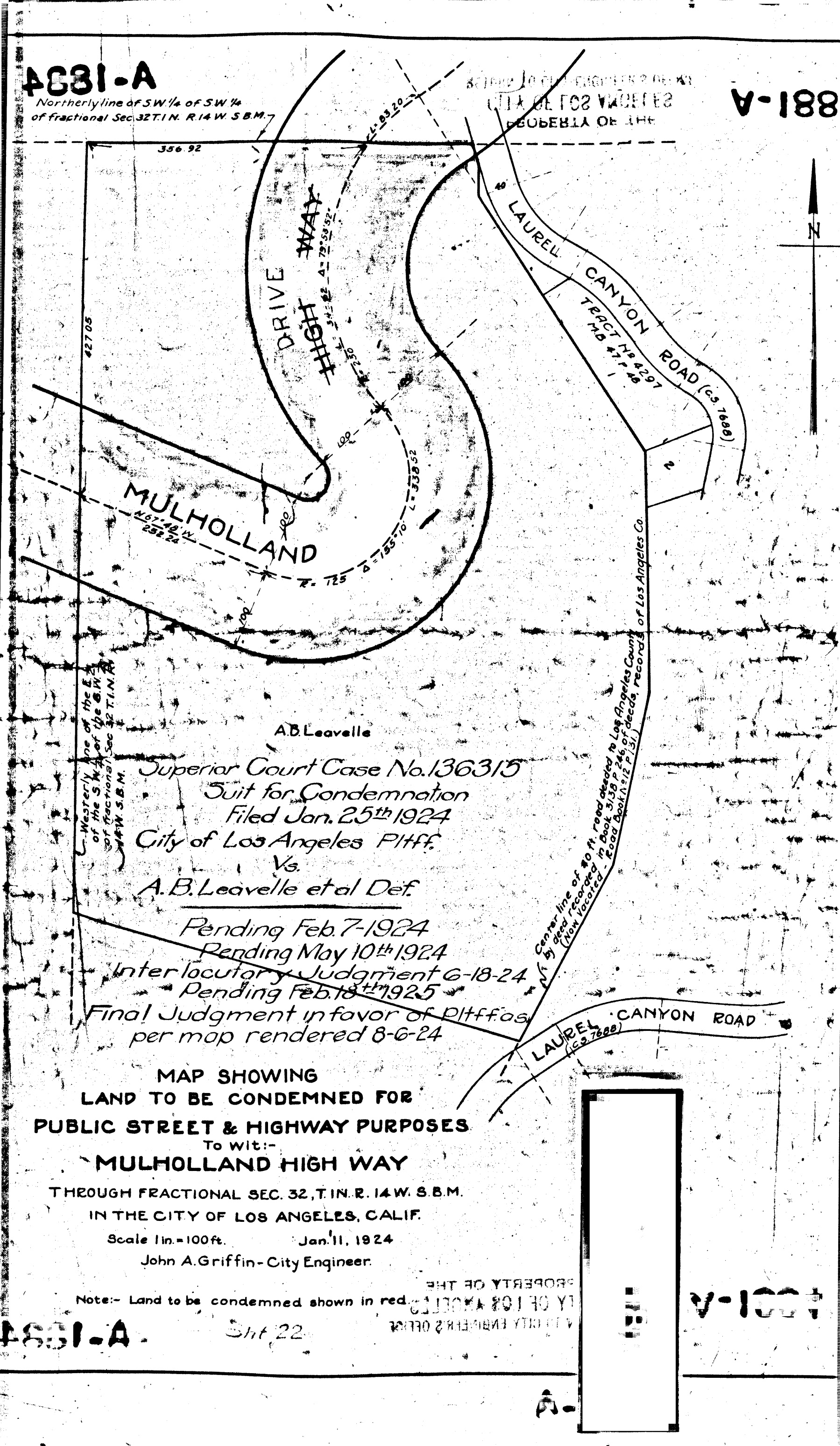


4681-A

Northerly line of SW 1/4 of SW 1/4 of Fractional Sec. 32, T. 1 N., R. 14 W., S. B. M.

881-A



Westerly line of the E 1/4 of the S 1/4 of the SW 1/4 of Fractional Sec. 32, T. 1 N., R. 14 W., S. B. M.

A. B. Leavelle

Superior Court Case No. 136315  
Suit for Condemnation  
Filed Jan. 25<sup>th</sup> 1924  
City of Los Angeles Plff.  
Vs.  
A. B. Leavelle et al Def.

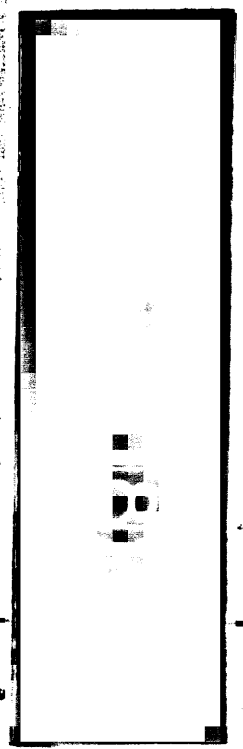
Pending Feb. 7-1924  
Pending May 10<sup>th</sup> 1924  
Interlocutory Judgment 6-18-24  
Pending Feb. 18<sup>th</sup> 1925  
Final Judgment in favor of Plffs as per map rendered 8-6-24

MAP SHOWING  
LAND TO BE CONDEMNED FOR  
PUBLIC STREET & HIGHWAY PURPOSES  
To wit:-  
MULHOLLAND HIGHWAY  
THROUGH FRACTIONAL SEC. 32, T. 1 N., R. 14 W., S. B. M.  
IN THE CITY OF LOS ANGELES, CALIF.  
Scale 1 in. = 100 ft. Jan. 11, 1924  
John A. Griffin - City Engineer.

Note:- Land to be condemned shown in red

4681-A

Sht 22



4681-A

Q  
Q