

LOS ANGELES

COUNTY

CENTINELA ELECTRIC

RAILWAY AVENUE

RIGHT OF WAY

ARIZONA AVENUE

MAP
SHOWING LAND TO BE CONDEMNED FOR
SANITARY SEWER PURPOSES
BETWEEN A POINT NORTHEASTERLY OF
CENTINELA AVENUE AND PERSHING DRIVE
IN THE
CITY OF LOS ANGELES
AND IN THE
COUNTY OF LOS ANGELES
CALIFORNIA

IN ACCORDANCE WITH ORDINANCE NO. 47822 (NEW SERIES)
JOHN A. GRIFFIN City Engineer
H. A. VAN NORMAN Consulting Engineer

Note: Land to be condemned shown colored red.
Dotted lines and dimensions shown hereon indicate
actual holdings where they differ from record subdivisions.

Superior Court Case No. 137069
Suit for Condemnation
Filed Feb. 10, 1924
City of Los Angeles Plaintiff
vs.
Playa Del Rey Heights, et al. Def.
Trials held March 4, 1924
Pending May 10, 1924
Dismissed Feb. 19, 1924
Sgt. 23

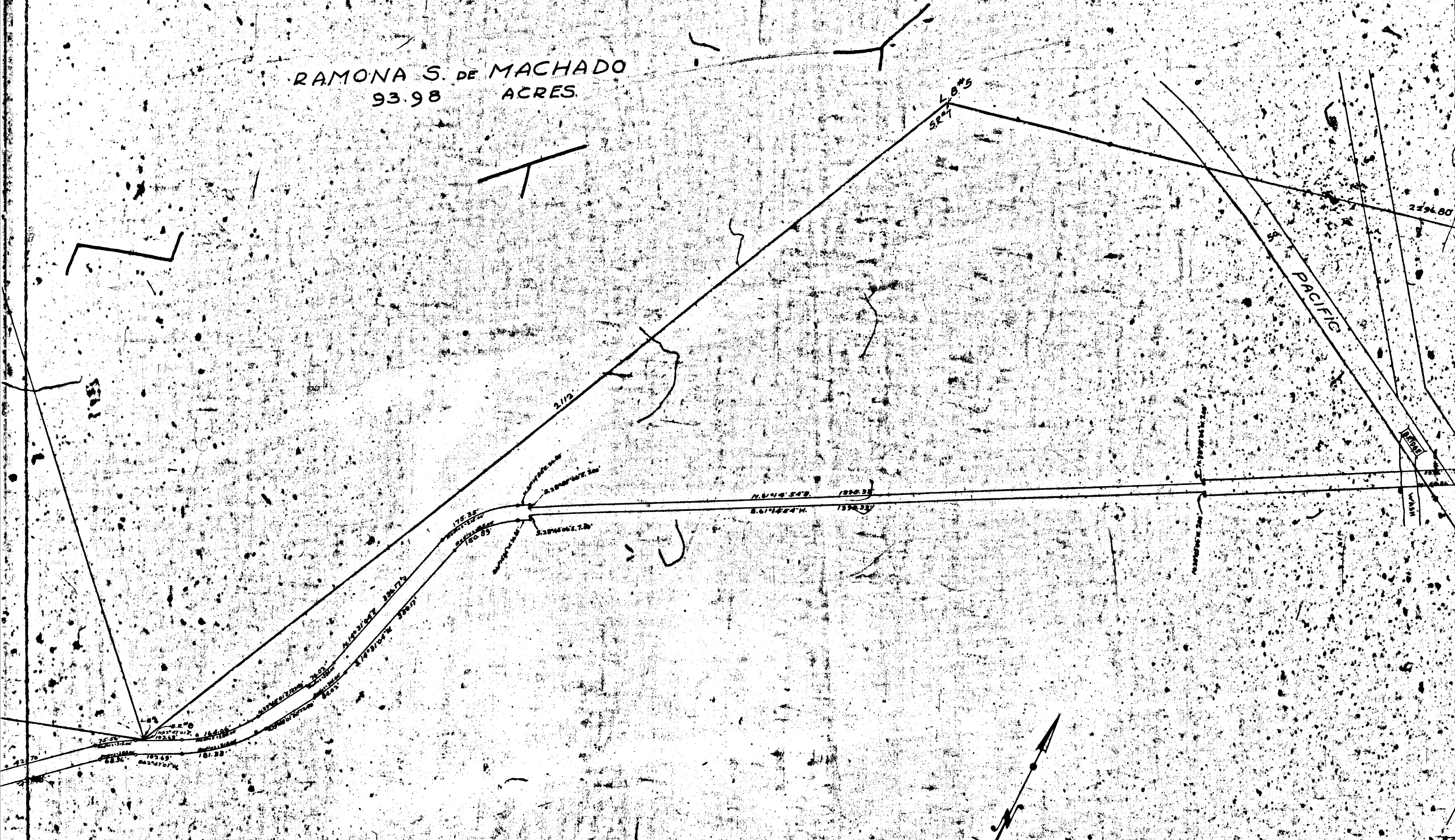
SECTION 19, TOWNSHIP 2 SOUTH,
RANGE 14 WEST, S. B. B. & M.

RANGE 14 WEST
RANGE 14 WEST

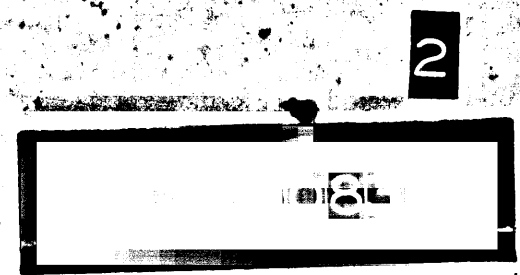
5811

ALLOTMENT

RAMONA S. DE MACHADO
93.98 ACRES



SECTION 24 TOWNSHIP 2 SOUTH
RANGE 15 WEST S.B. & M.



SHOWING LAND TO
SANITARY SE
BETWEEN A POINT
CENTINELA AVENUE
IN
CITY OF L
AND
COUNTY OF
CALIF

IN ACCORDANCE WITH
JOHN A. BRIFAN
City Engineer

SCALE: 1 INCH
Note: Land to be con
Dotted lines and dis
actual holdings where

CONDOR
PATENTS, BOOK 1 PAGES 507 & 508

ANGELES

RANGE 15 WEST
RANGE 14 WEST

BALLONA

PACIFIC ELECTRIC RAILWAY COMPANY'S RIGHT OF WAY

MACHADO

CASE NO. 2000

COURT CASE NO. 2000
7TH JUDICIAL DISTRICT
STATE OF CALIFORNIA
Miscellaneous Records, Book 3 Pages 204 to 209

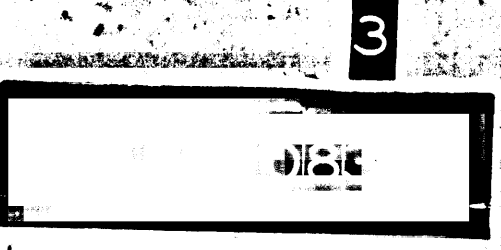
RAMONA S. D.
93-98

O

U
N
N



SECTION 24
RANGE 15



REDONDO PATENTS, BOOK 1 PAGES 507, 508, 509

LOS

ANGELES

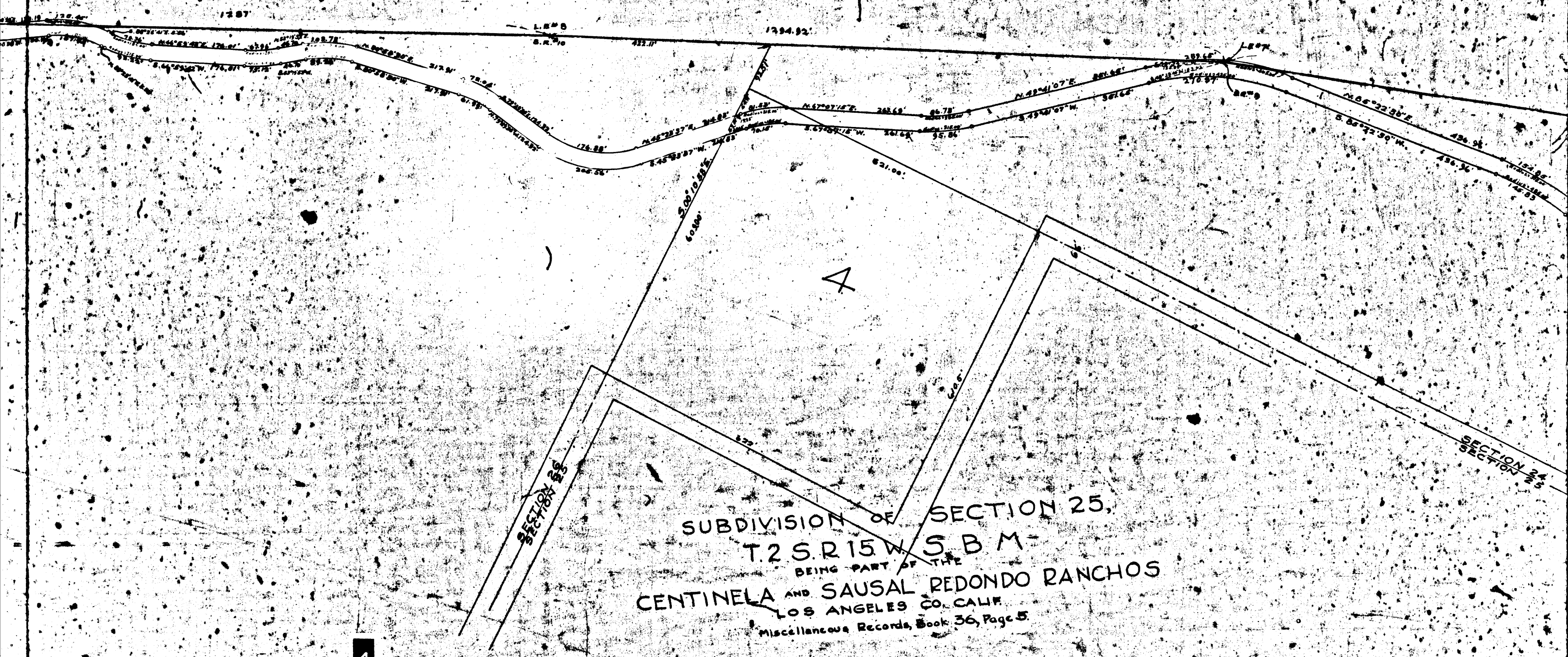
6056/6'

PACIFIC ELECTRIC

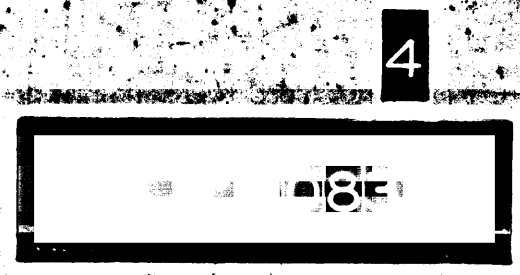
AUGUSTIN DISTRICT COURT CASE
17TH JUDICIAL DISTRICT
STATE OF CALIFORNIA
Miscellaneous Records, Book 3, Page 3

RAMONA S. DE MACHADO
24603065 ACRES

C O



SUBDIVISION OF SECTION 25,
T2S.R15W.SBM-
BEING PART OF THE
CENTINELA AND SAUSAL REDONDO RANCHOS
LOS ANGELES CO. CALIF.
Miscellaneous Records, Book 36, Page 5



SAUSAL

LOS

STREET

OF EL PASO

RAMONA S. DE M...
24603065 AC

LEES

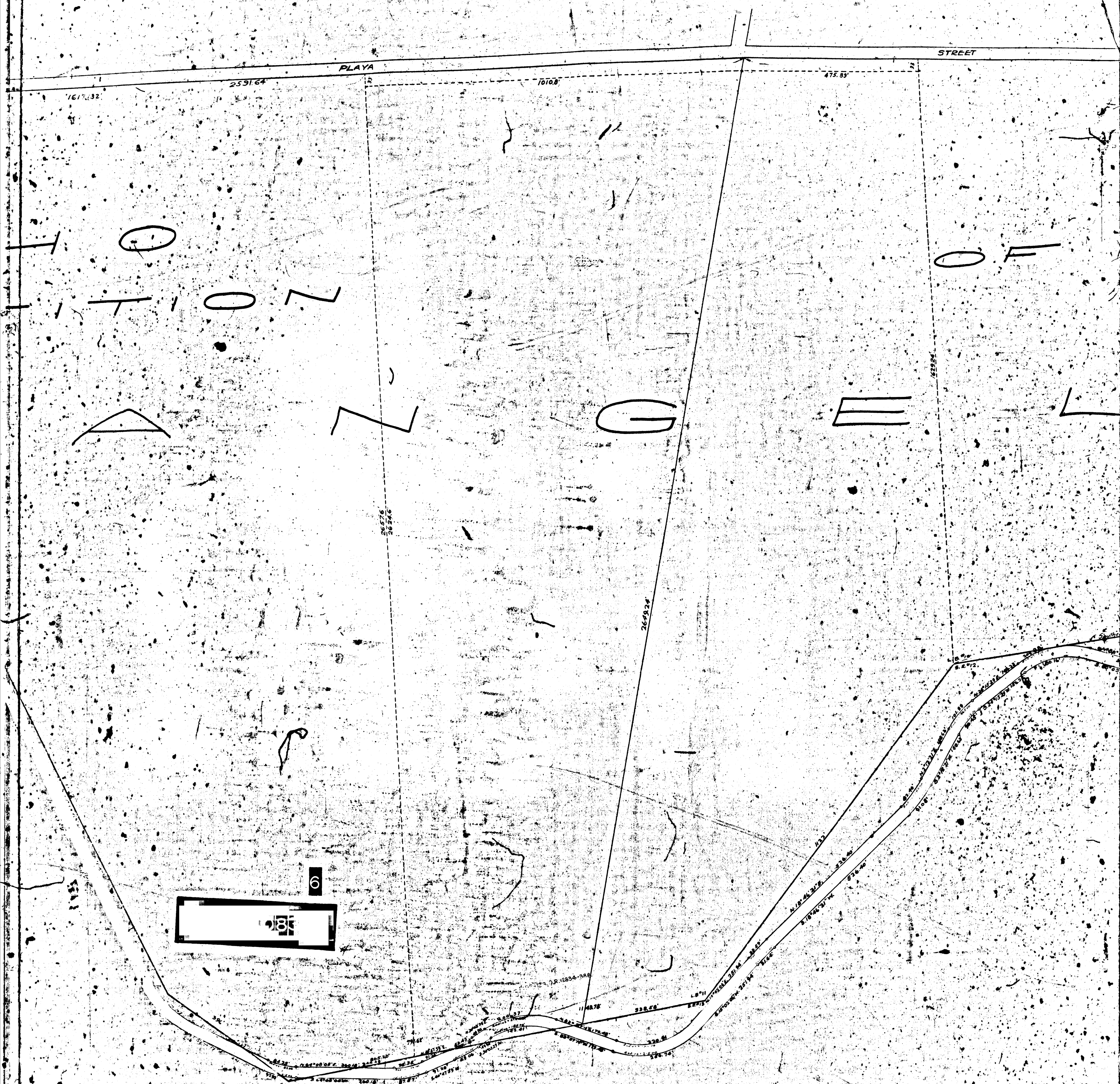


5



S. B. B. & M.

OF SAUSA



PLAYA

STREET

1617.32

2591.64

1010.8

475.89

26276
26246

2629.24



6

26

TOWNSHIP 2 SOUTH RANGE 15 WEST S. B. B. & M.

RANCHO

O F

RANCH
PARTITION

NA S DE MACHADO
341.85095 ACRES

O

S

A

BALLONA

72
PART
PORT BALLONA

HULBERT AVENUE

IDAENE AVENUE

RE-SUBDIVISION
OF A PORTION OF
71
M.L. WICKS ADDITION
TO TOWN OF
PORT BALLONA
Miscellaneous Records Book 37 Page 37

Part of Section of
T29, R15W, S. 18N

SECTION 26

TOWNSHIP

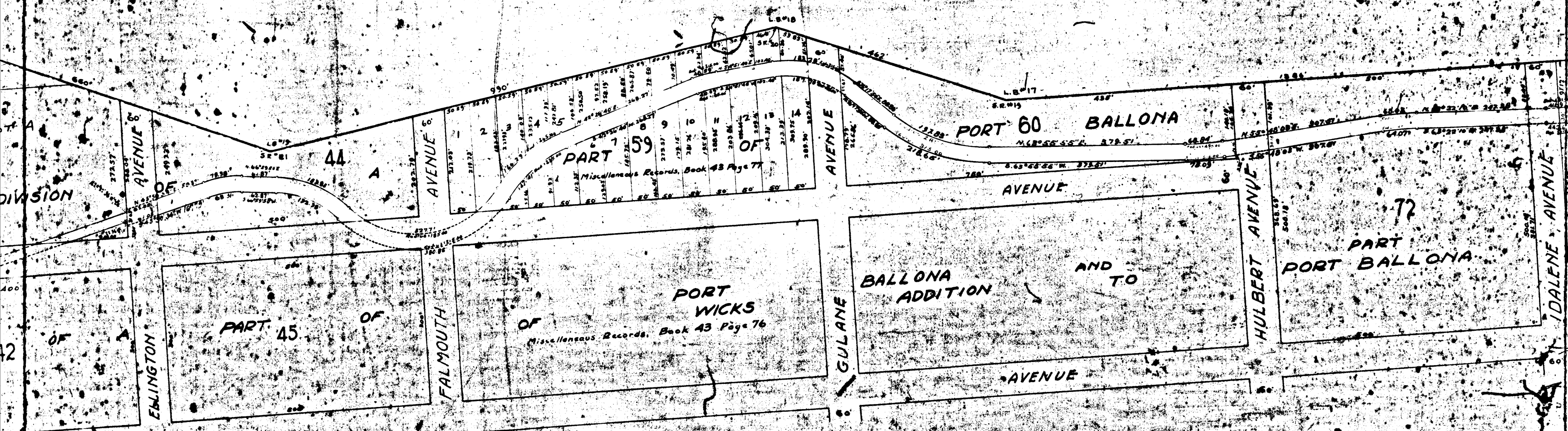
7
1083

CITY

R

A

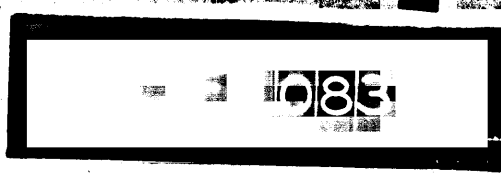
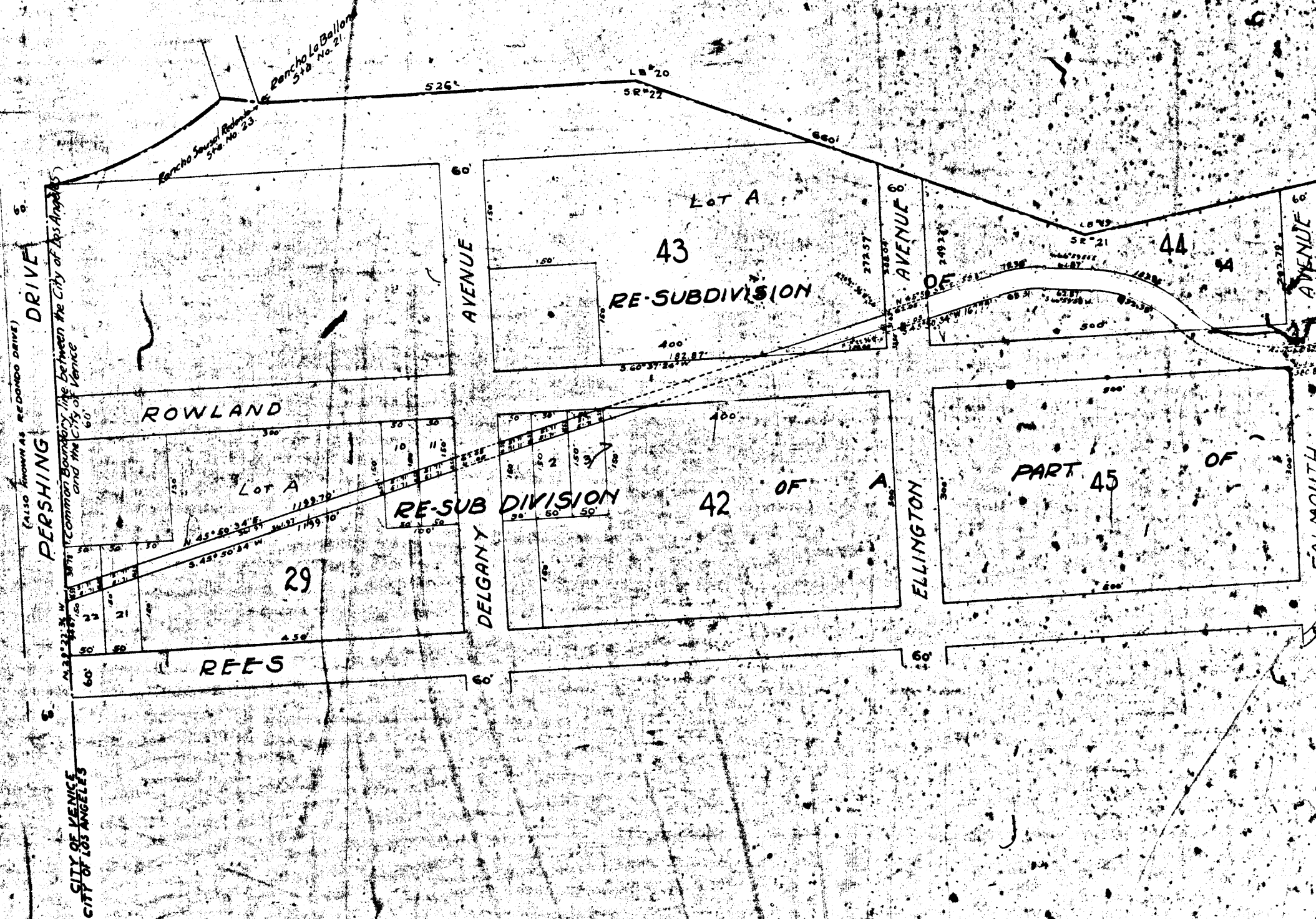
RAMONA S DE MACHADO
341.85095 ACRES



8

1033

021



9