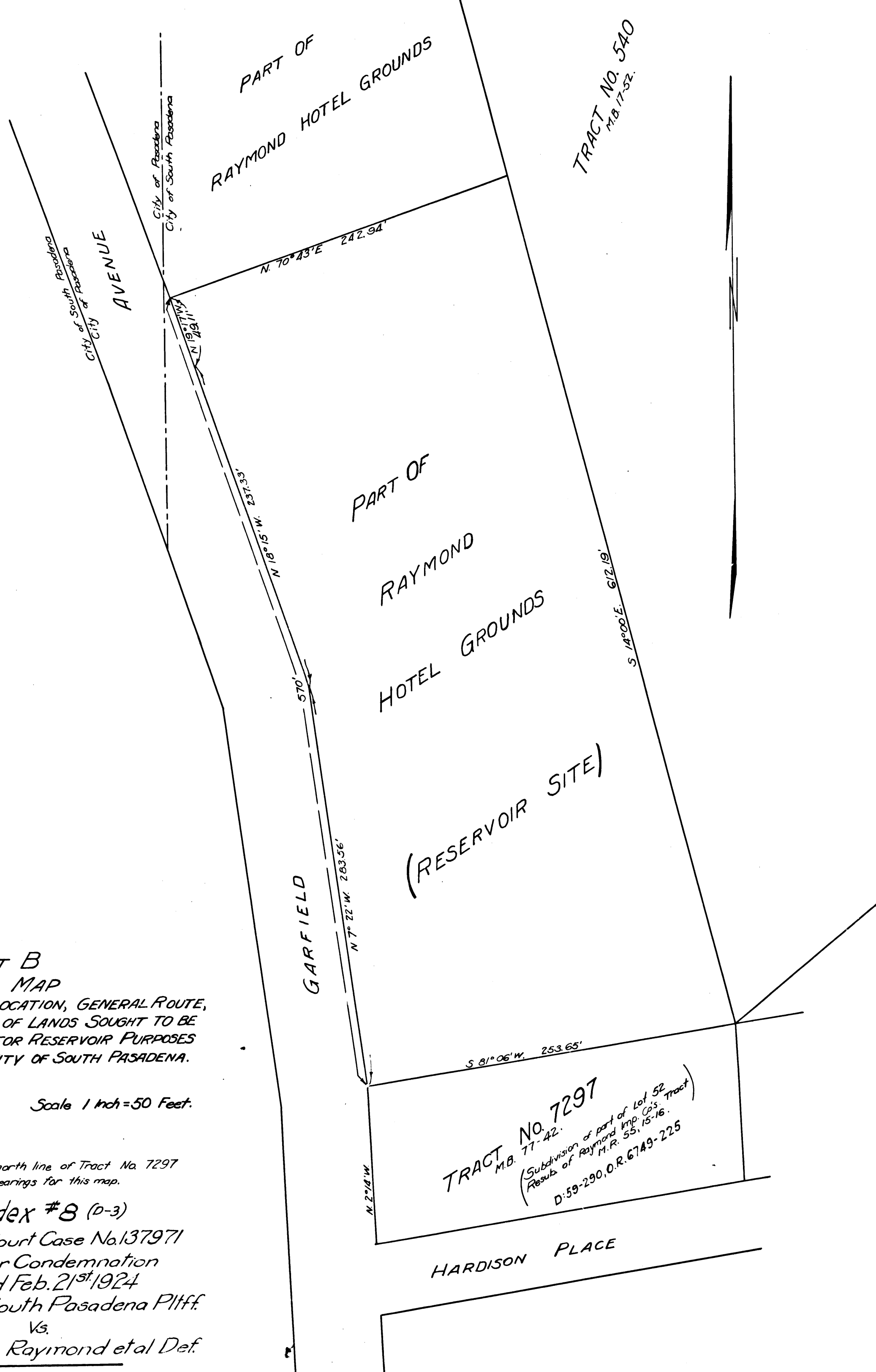


50TH

VEMCO PASADENA, CAL.

LS 6

H101



C.F. 1087 -

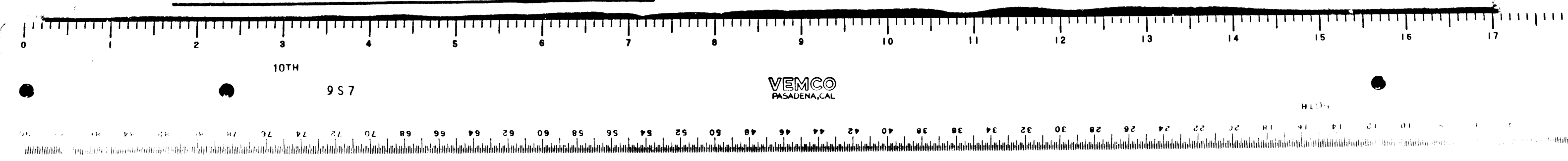
EXHIBIT B
MAP
SHOWING LOCATION, GENERAL ROUTE,
AND TERMINI OF LANDS SOUGHT TO BE
CONDEMNED FOR RESERVOIR PURPOSES
FOR THE CITY OF SOUTH PASADENA.

October 1923 Scale 1 inch = 50 Feet.

Note: The bearing of the north line of Tract No. 7297
is used as a basis of bearings for this map.

Index #8 (D-3)
Superior Court Case No. 137971
Suit for Condemnation
Filed Feb. 21st 1924
City of South Pasadena Pltff.
Vs.
Walter Raymond et al. Def.
Pending March 13-1924
Pending May 10th 1924
Interlocutory Judgment 6-12-24
Pending Feb. 18th 1925

Final Judgment in favor of Plaintiff
as per map, rendered May 7th, 1953.
E:162-73, O.R. 41845-63



10TH

9 S 7

VEMCO PASADENA, CAL.

H101