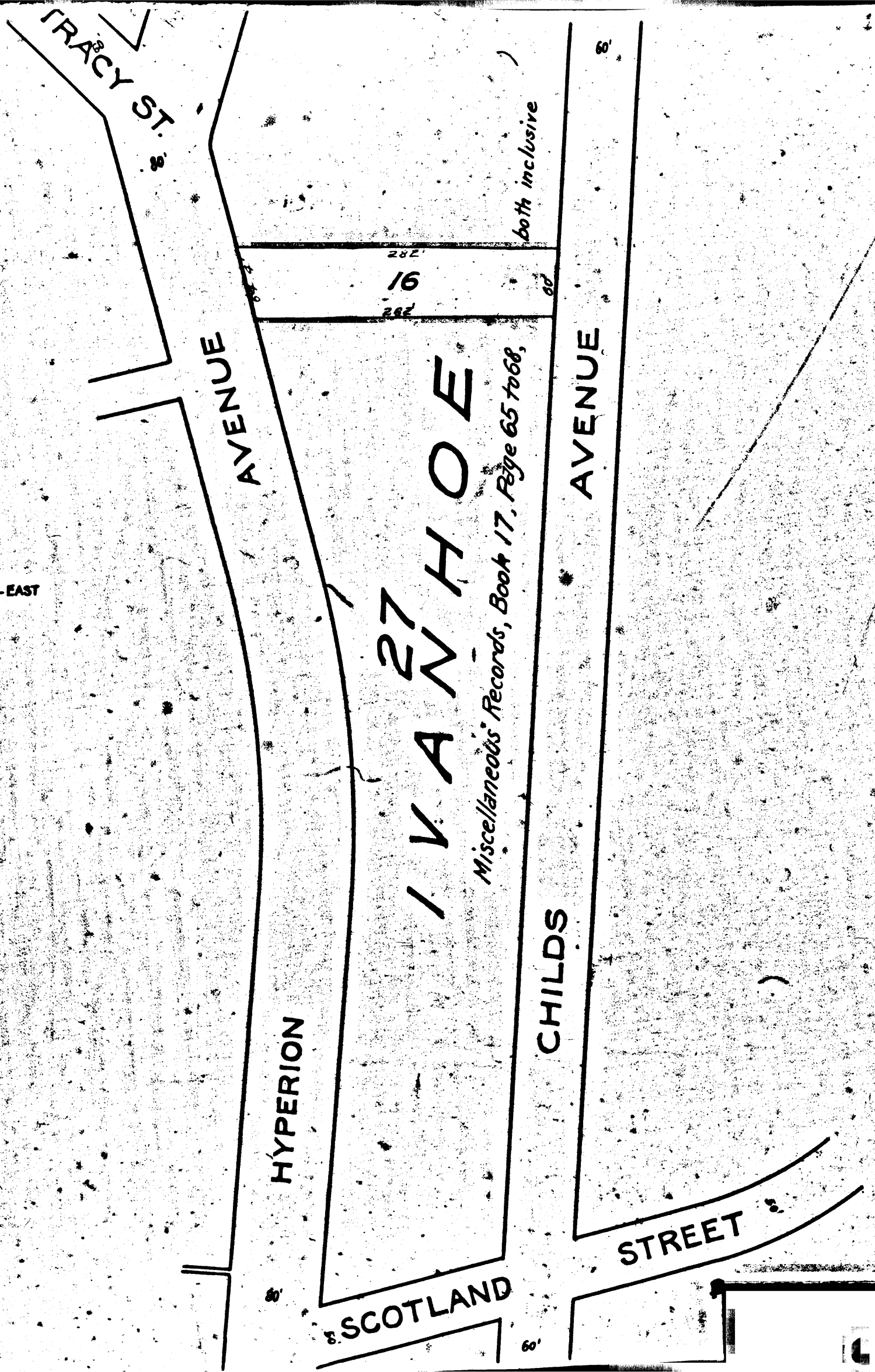
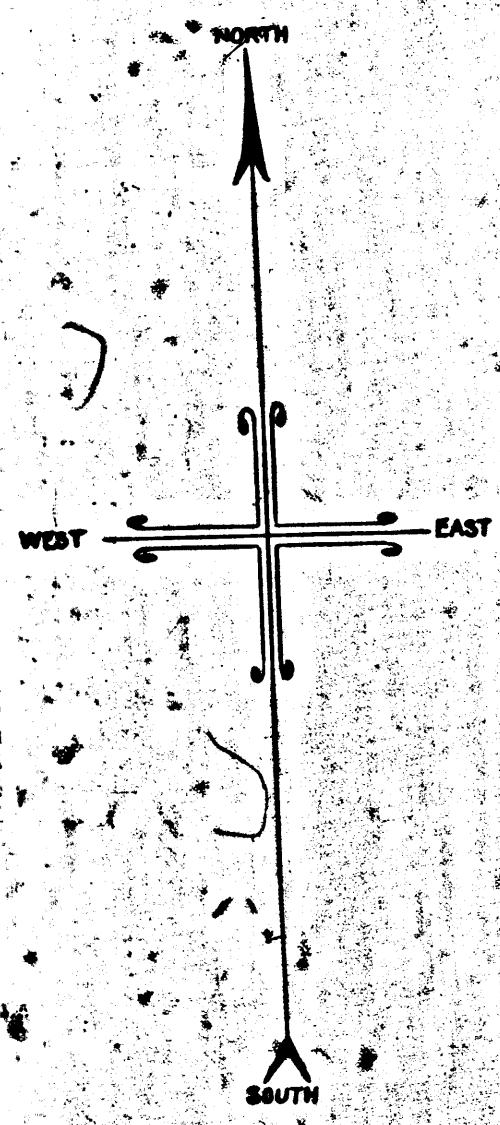


381-A

MOBILIA DE L'HE

381-A



MAP
SHOWING LAND TO BE CONDEMNED
FOR THE
OPENING AND EXTENDING
OF
TRACY STREET
BETWEEN
CHILDS AVENUE AND HYPERION AVENUE
IN THE
CITY OF LOS ANGELES, CALIFORNIA.

In Accordance with Ordinances Nos. 47,202 and 47,704, (New Series)
John A. Griffin, City Engineer. January, 1924.

SCALE - 1 INCH = 100 FEET

NOTE - Land to be condemned shown colored Red.
Superior Court Case No. 138189
Suit for Condemnation
Filed Feb. 25th 1924
City of Los Angeles Pltff.
Vs.
Edward W. Waymon et al. Def.

Pending March 15, 1924
Interlocutory Judgment May 13, 1924
Pending Feb. 18th 1925
A-1922

Final judgement in favor of Pltff., as per map, rendered March 12, 1925
D:40-210 O.R. 4856-51

1088