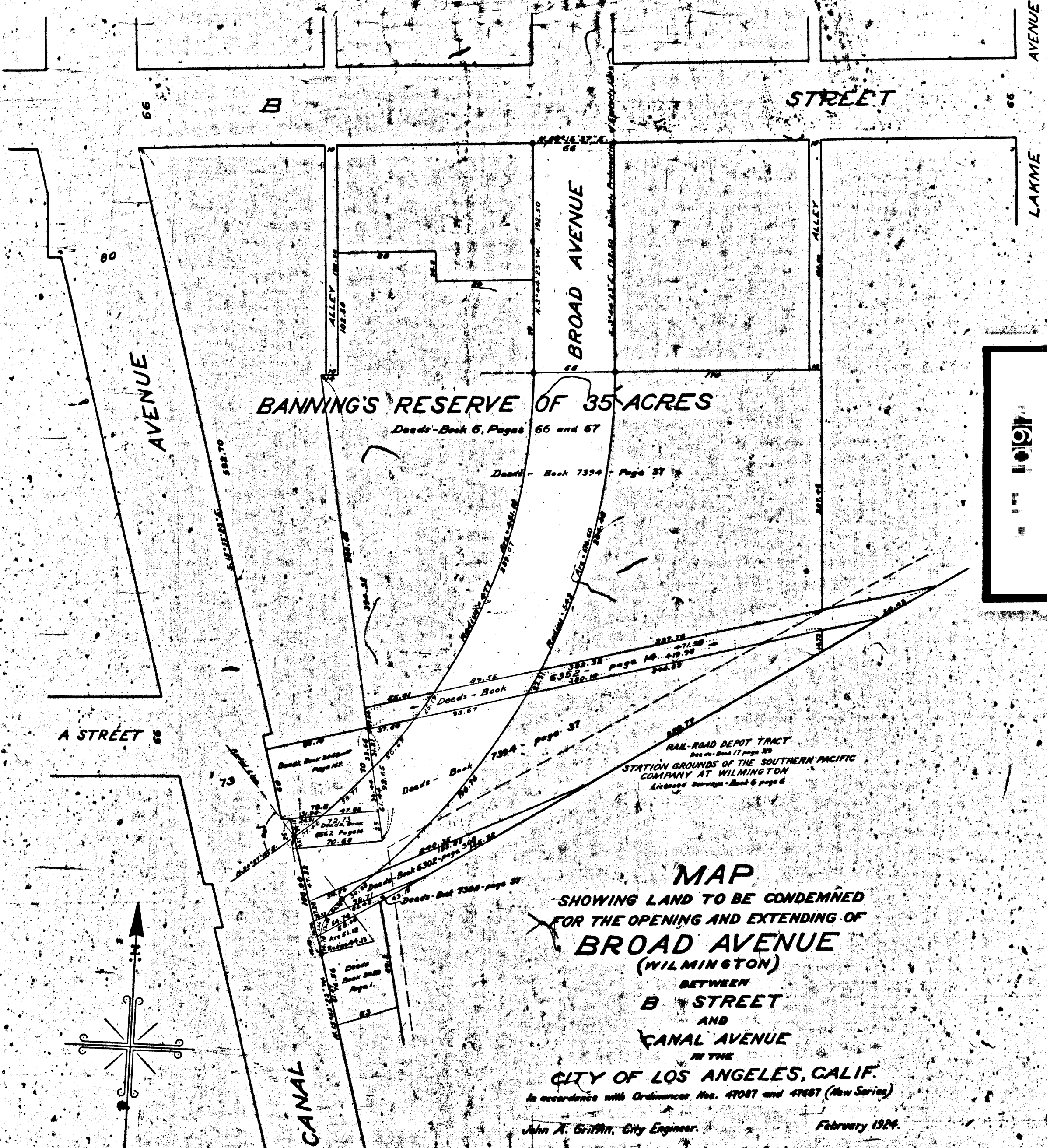


1803-A

V-5031



MAP
 SHOWING LAND TO BE CONDEMNED
 FOR THE OPENING AND EXTENDING OF
BROAD AVENUE
 (WILMINGTON)
 BETWEEN
B STREET
 AND
CANAL AVENUE
 IN THE
CITY OF LOS ANGELES, CALIF.

In accordance with Ordinances Nos. 47087 and 47687 (New Series)
 John A. Griffin, City Engineer. February 1924.
 Scale 1 inch = 80 feet.

NOTE: Land to be Condemned shown colored red.
 Superior Court Case No. 10070 Final Judgment of condemnation
 in favor of plff as per map rendered Dec. 29th 1925
 Judg. Bk. 603-30

A-2031

A-2031

V-5031