

RAMONA S. MACHADO
47330195 ACRE ALLOTMENT

DISTRICT COURT CASE NO. 2722
17th JUDICIAL DISTRICT
STATE OF CALIFORNIA
See Case Records, Book 3 Page 204 to 209

Final judgment in favor of Plff. as per
map, rendered December 12, 1927.
Judg. Bk. 676-35

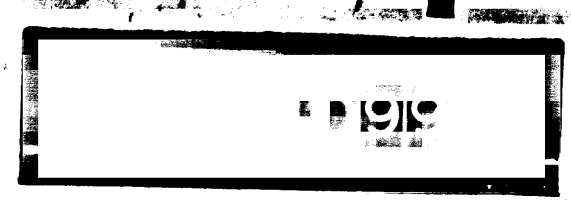
Superior Court Case No. 140369
Suit for Condemnation
Filed March 27th 1924
City of Los Angeles Plff.
vs.
Anna C. Vickers et al. Def.
Pending April 28th 1924
Pending Feb 18th 1925
Interlocutory decrees rendered 5-15-25 89-22-25
on all parcels.
Pending Apr. 8th 1927

MAP
SHOWING LAND TO BE CONDEMNED
FOR
SANITARY SEWER PURPOSES
BETWEEN
A POINT IN THE NORTH WESTERLY LINE OF
RAMONA S. MACHADO 47330195 ACRE ALLOTMENT
AS SET FORTH IN DISTRICT COURT CASE NO. 2722
OF THE DISTRICT OF LOS ANGELES,
17th JUDICIAL DISTRICT - STATE OF CALIFORNIA
AND
OVERLAND AVENUE
AND BETWEEN ANOTHER POINT IN
OVERLAND AVENUE
AND
HILL STREET
IN THE COUNTY OF LOS ANGELES
CALIFORNIA.

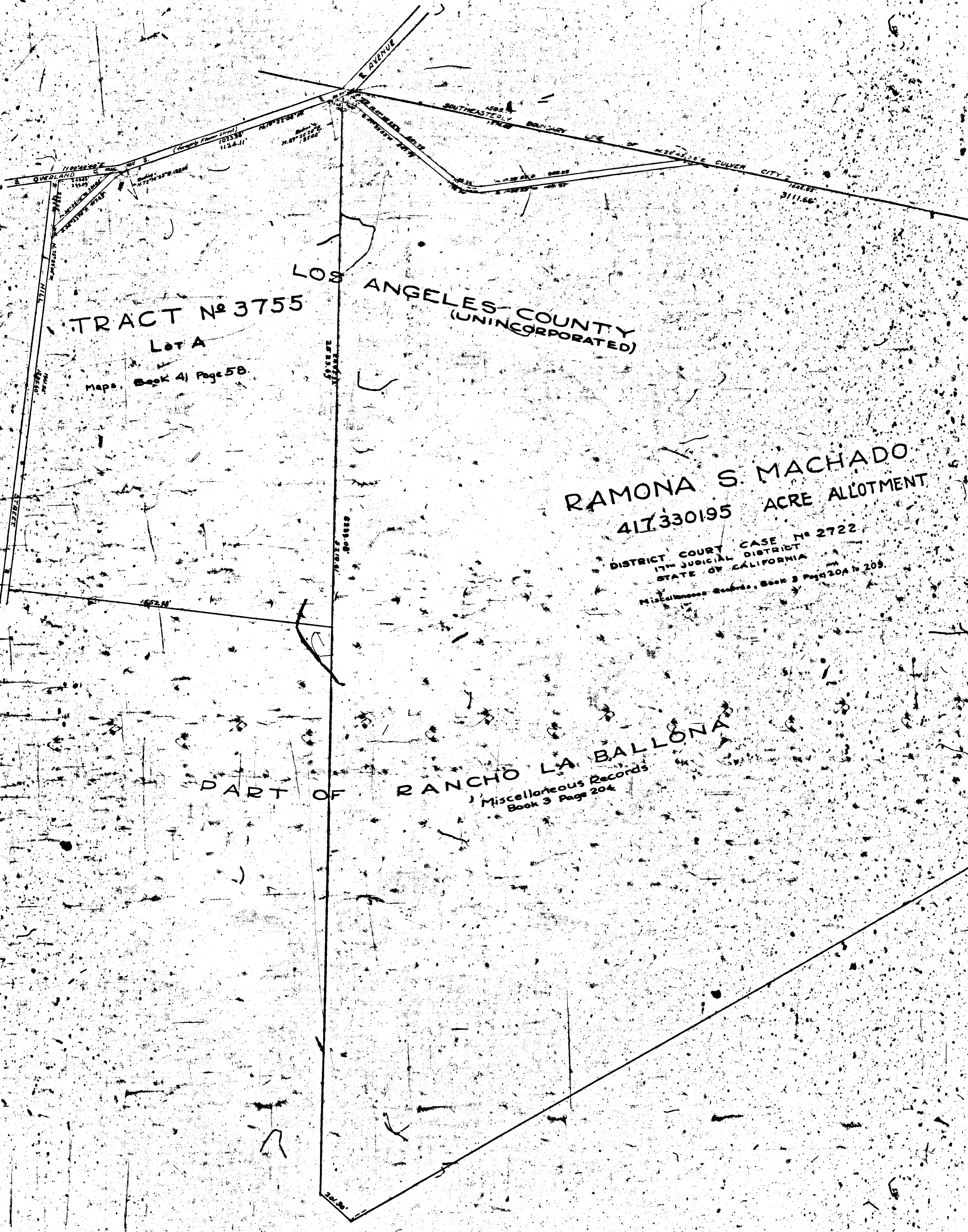
IN ACCORDANCE WITH ORDINANCE NO. 48125 (REV. 1924)
OF THE CITY OF LOS ANGELES.
SCALE 1 INCH = 200 FT.
MARCH - 1924

John A. Griffin
City Engineer
H. A. VAN NORMAN
Consulting Engineer

Notes: Land condemned shown colored red.



5334
3/17-25



TRACT No 3755
Lot A

Map No. 41 Page 58

LOS ANGELES COUNTY
(UNINCORPORATED)

RAMONA S. MACHADO
417,330.195 ACRE ALLOTMENT

DISTRICT COURT CASE No 2722
17th JUDICIAL DISTRICT
STATE OF CALIFORNIA
Miscellaneous Records, Book 3 Page 204 & 209

PART OF RANCHO LA BALLONA
Miscellaneous Records
Book 3 Page 204

