

MAP
 SHOWING THE
 LAND TO BE CONDEMNED
 FOR THE
 OPENING, WIDENING AND EXTENDING
 OF
SIXTY-SIXTH STREET
 BETWEEN
MAIN STREET
 AND
MONETA AVENUE
 IN THE
CITY OF LOS ANGELES, CALIF.

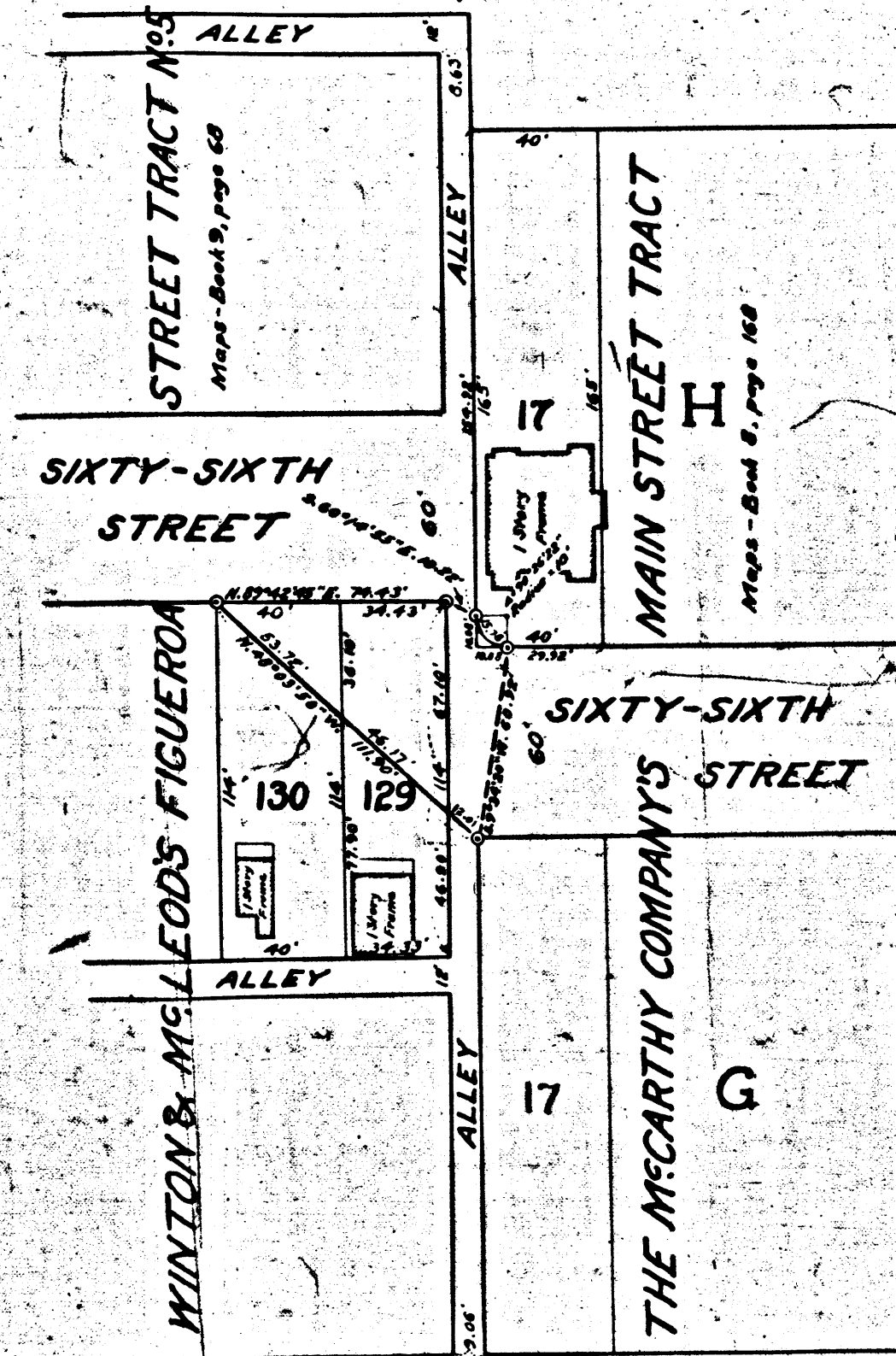
In accordance with Ordinances Nos. 47360 and 47917 (New Series)
 John A. Griffin, City Engineer. Scale: 1 inch = 50 feet.

Note: - Land to be condemned shown colored Red.

A-2041 Shit. 7

Superior Court Case No. 142303
 Suit for Condemnation
 Filed April 24th 1924
 City of Los Angeles, Plff.
 Vs.
 Herbert D. Crane et al. Def.

Pending April 30th 1924
 Pending Feb. 18th 1925
 Final judgment in favor of Plff. as per
 map rendered Mar. 22, 1926
 D:47-256 OR:46:3-84



1403-A

U.S. DEPARTMENT OF THE INTERIOR
 GEOLOGICAL SURVEY

1403-A