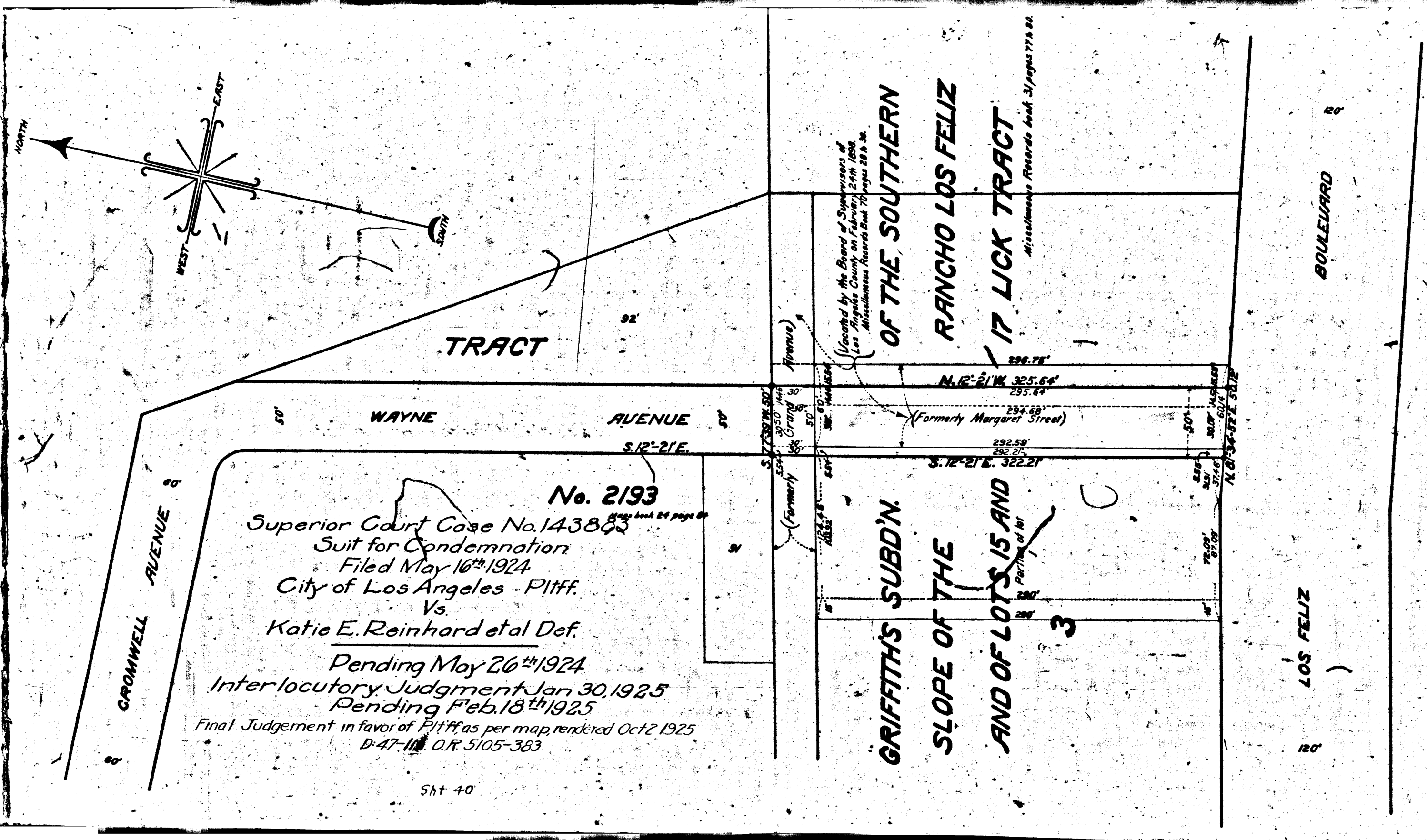


13005 A



**No. 2193**  
 Superior Court Case No. 143803  
 Suit for Condemnation  
 Filed May 16<sup>th</sup> 1924  
 City of Los Angeles - Pltff.  
 Vs.  
 Katie E. Reinhard et al. Def.  
 Pending May 26<sup>th</sup> 1924  
 Interlocutory Judgment Jan 30, 1925  
 Pending Feb. 18<sup>th</sup> 1925  
 Final Judgment in favor of Pltff. as per map rendered Oct 2 1925  
 D-47-111 O.R. 5105-383

Shit 40

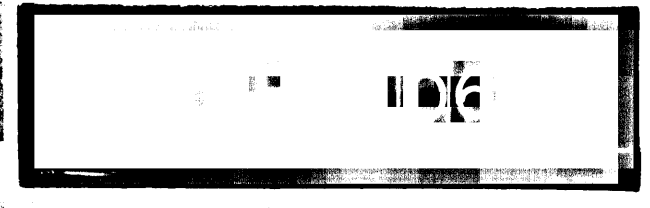
**MAP**  
 SHOWING THE  
 LAND TO BE CONDEMNED  
 FOR THE  
 OPENING AND EXTENDING  
 OF  
**WAYNE AVENUE**

BETWEEN  
 CROMWELL AVENUE AND LOS FELIZ BOULEVARD  
 IN THE  
 CITY OF LOS ANGELES, CALIFORNIA.  
 in accordance with ordinances Nos. 47821 and 48279 (New series)  
 JOHN A. GRIFFIN, City Engineer. APRIL 1924

Scale: 1 Inch = 50 Feet.

Note: Land to be condemned shown colored red  
 Dotted lines show actual holdings where they differ from  
 recorded subdivisions.

**A 2097**



Shit. 4

13005 A