

COUNTY
STREET OPENING DISTRICT NO. 4
MAP OF
PROPOSED OPENING & EXTENDING
OF FISHBURN AVE.

BETWEEN
FLORENCE AVE. & BELL AVE.

SHOWING

The exterior boundary of the District to be assessed therefor under the provision of the County Street Opening Act of 1923, Approved May 11, 1923.

SCALE 1"=100' JAN. 1924.

J. E. ROCKHOLD - COUNTY SURVEYOR

Submitted:
Alvarez
Senior Engineer

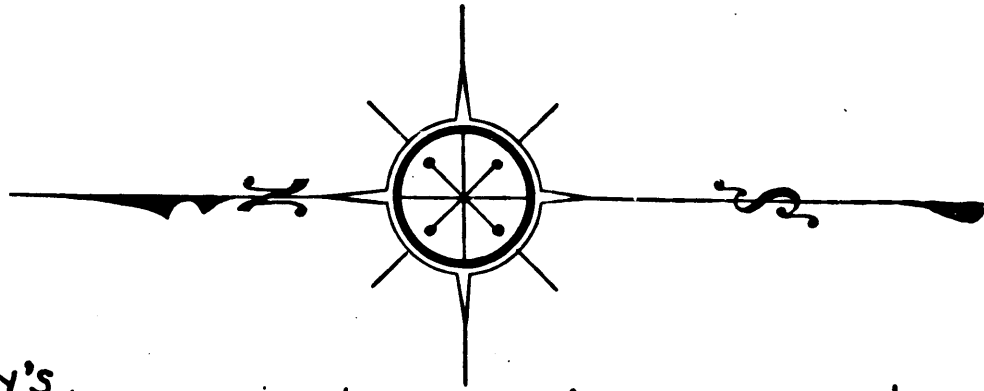
Approved: *J. E. Rockhold*
County Surveyor

Approved as to form
Edward T. Bishop, County Counsel.
by *Conroy, Woodcock*
Chief Deputy

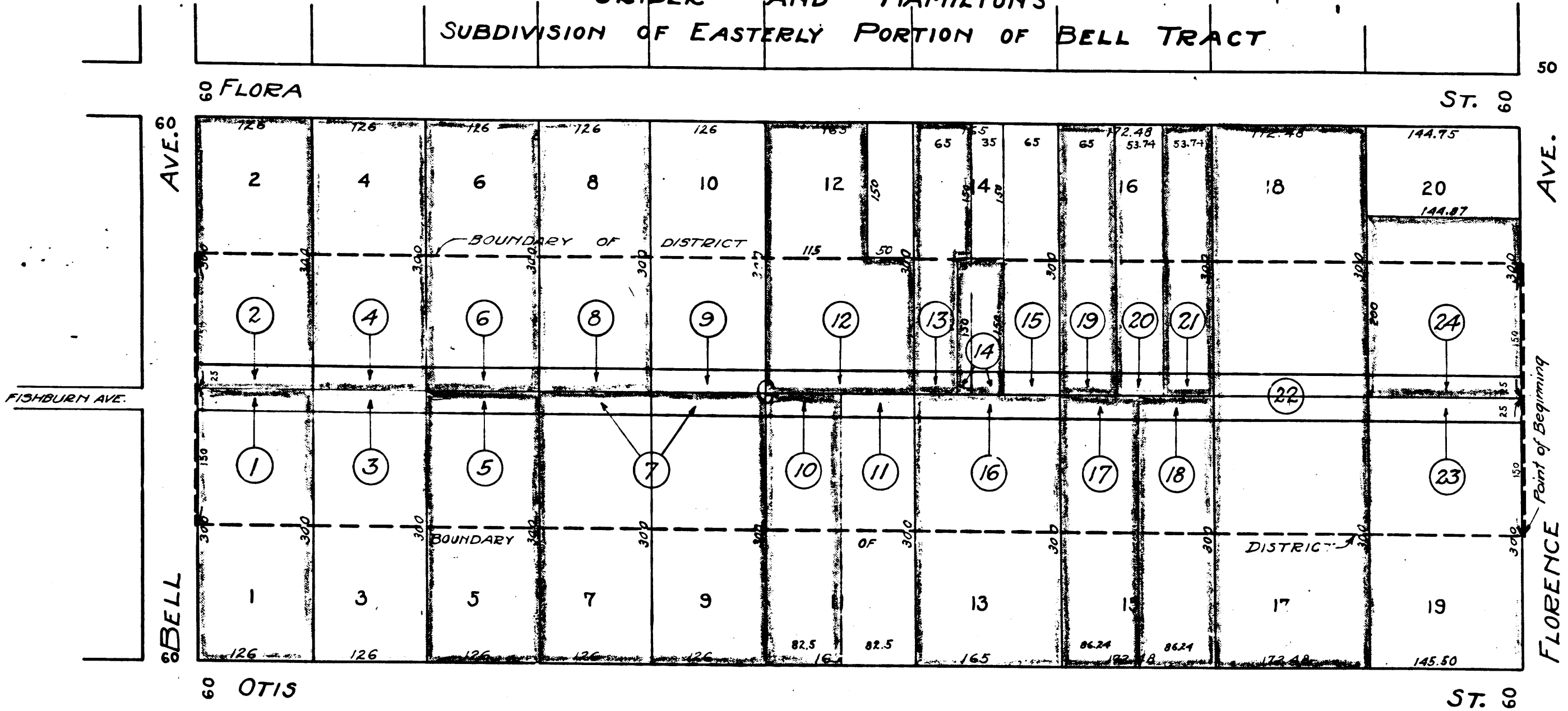
LEGEND
District Boundary Line - - - - -
Land sought to be condemned colored red.

I hereby certify that the Board of Supervisors of Los Angeles County did, on the 28th day of January 1924, by resolution, duly adopted, approve the accompanying map of the assessment district of County Street Opening District No. 4 of the County of Los Angeles for the opening & extending of Fishburn Ave.

Clerk of Board of Supervisors of said County of Los Angeles.
by
Deputy



GRIDER AND HAMILTON'S
SUBDIVISION OF EASTERLY PORTION OF BELL TRACT



M.B. 3-36

Superior Court Case No. 144597
Suit for Condemnation
Filed May 27th 1924
County of Los Angeles Pltff.
Vs.
Frank D. Aloï et al Def.
Pending June 6th 1924
Pending Feb. 18th 1925
Final Judgment in favor of Pltff. Aug. 31st 1925
Judg. Bk. 595-295

EXHIBIT C

Larger parcels of which parcels sought to be condemned constitute only a part are outlined in colors.
Numbers in circles indicate parcels sought to be condemned. These parcels are described in Paragraph III of the Complaint.
Portion colored red shows location, general route and termini of public road to be condemned.

C.F. 11110 -

Shf. 357

O. & W. No. 4	
Drawn by Settles	Jan. 1924
Traced by Settles	Jan. 1924
Checked by Compton	Jan. 1924