

sht. 7  
 Superior Court Case No. 144822  
 Suit for Condemnation  
 Filed May 31<sup>st</sup> 1924  
 City of Los Angeles Plff.  
 Vs.  
 S. Mushigan et al Def.  
 Pending June 12<sup>th</sup> 1924  
 Pending Feb. 13<sup>th</sup> 1926  
 Final Judgment in favor of Plff. as per map, entered Oct. 2, 1926  
 D47-111, D.R. 4490-329

**W. B. THOMPSON'S TRACT**  
 Maps: Book 3, Page 42  
 see Detail →

**J. C. BRAM'S TRACT**  
 Maps: Book 7, Page 37

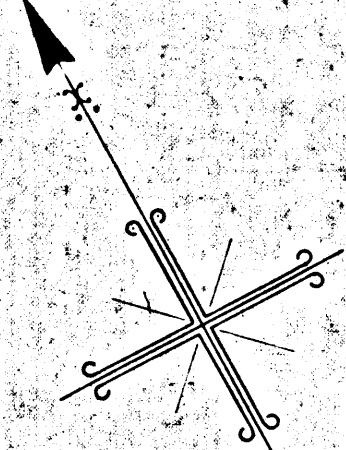
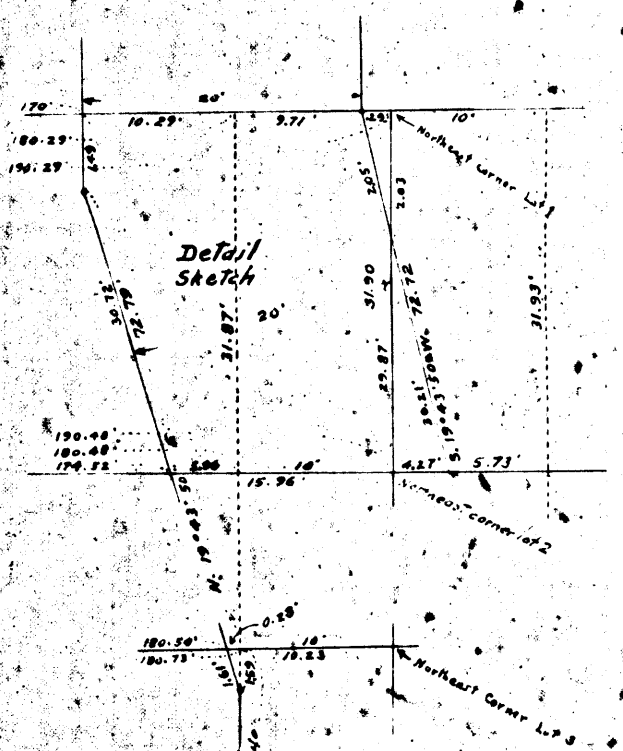
**MAP**  
 SHOWING LAND TO BE CONDEMNED  
 FOR THE OPENING AND EXTENDING OF,  
 THE FIRST ALLEY NORTHWESTERLY  
 OF SOTO STREET FROM A POINT  
 THREE HUNDRED FIFTY-ONE AND NINE-  
 TY HUNDREDTHS (351.90) FEET  
 NORTHEASTERLY OF SIXTH STREET  
 TO THE NORTHEASTERLY LINE OF  
 SIXTH STREET

IN THE  
**CITY OF LOS ANGELES, CAL.**  
 IN ACCORDANCE WITH ORDINANCES NUMBERS 47173  
 AND 47792 (New Series.)

John A. Griffin, City Engineer      April, 1924.

Scale: 1 inch = 50 feet.

NOTE: Land to be condemned shown colored Red.  
 Dotted Lines and dimensions show dead records  
 where they differ from record subdivisions.



A 2070

SOTO A

PROPERTY OF THE  
 CITY OF LOS ANGELES  
 PREPARED BY THE CITY ENGINEER'S OFFICE

SOTO A