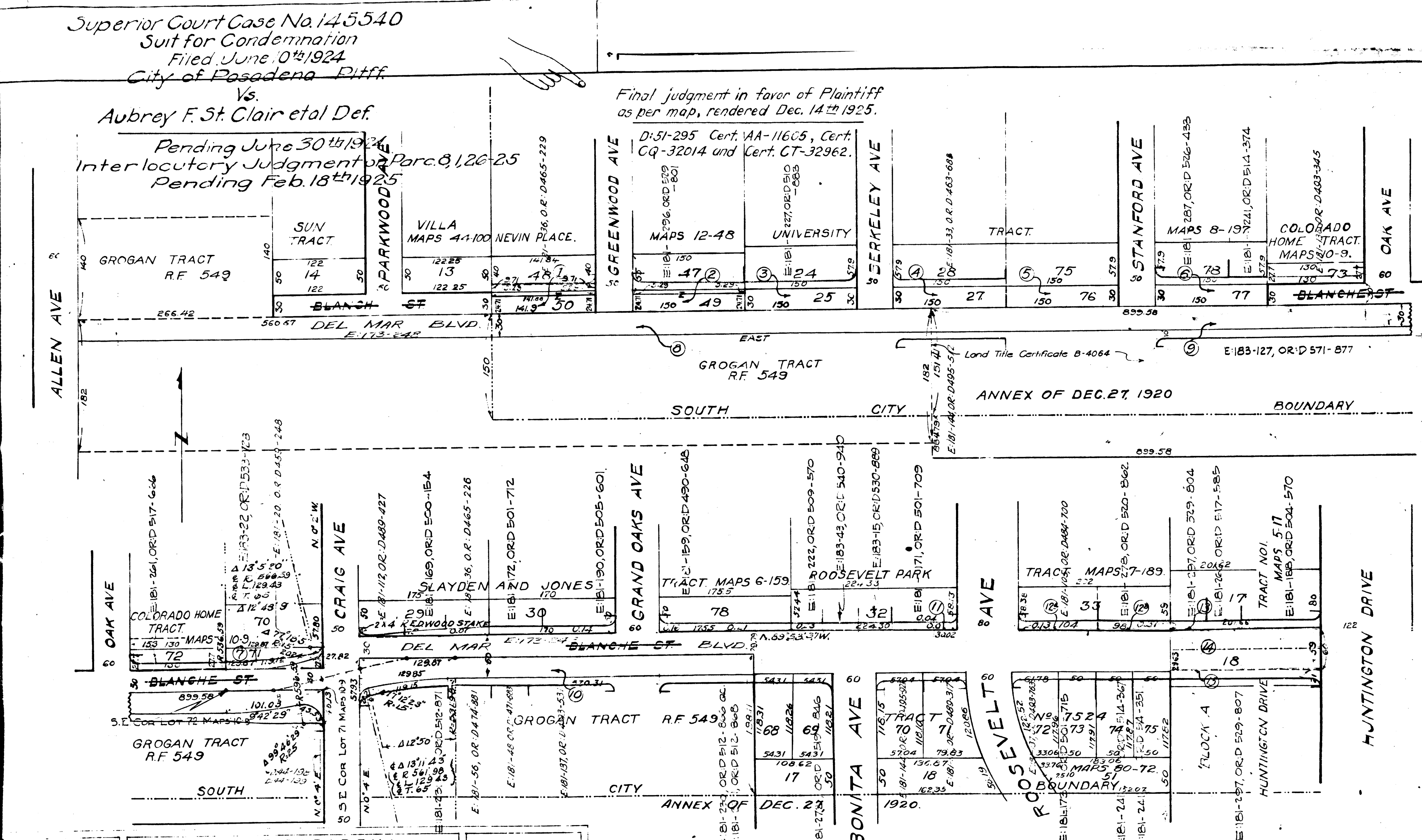


Superior Court Case No. 145540  
 Suit for Condemnation  
 Filed June 10<sup>th</sup> 1924  
 City of Pasadena Pltff.

Vs.  
 Aubrey F. St. Clair et al Def.

Final judgment in favor of Plaintiff  
 as per map, rendered Dec. 14<sup>th</sup> 1925.

Pending June 30<sup>th</sup> 1924  
 Interlocutory Judgment on Parc. 8, 1, 26-25  
 Pending Feb. 18<sup>th</sup> 1925



DRAWN BY E.T.  
 CHECKED BY A.F.B.  
 FIELD BOOKS 327, P. 56  
 APPROVED M.C. Gault  
 CITY ENGINEER & SUPERINTENDENT OF STREETS

CITY OF PASADENA  
 OFFICE OF CITY ENGINEER & SUPERINTENDENT OF STREETS  
**BLANCHE ST.**  
 OPENING, WIDENING & EXTENDING  
 HUNTINGTON DRIVE TO ALLEN AVE.

DATE FEB. 1923  
 SCALE 1" = 100'  
 DRAWING NUMBER  
**G-79**

THE NORTH PROPERTY LINE OF BLANCHE ST. CONNECTS A 2"x4" REDWOOD STAKE, AT THE S.W. CORNER OF LOT 29 OF THE SLAYDEN & JONES TRACT WITH THE COMMON CORNER ON HUNTINGTON DRIVE OF LOTS 17 & 18 OF THE HUNTINGTON DRIVE TRACT NO. 1 BLOCK A.

NOTE: SHADED PORTION SHOWS LAND TO BE CONDEMNED.

EXHIBIT "C" Index # 8  
 sht. 41

C.F. 1116 -

MEMCO PASADENA, CAL.

MEMCO PASADENA, CAL.