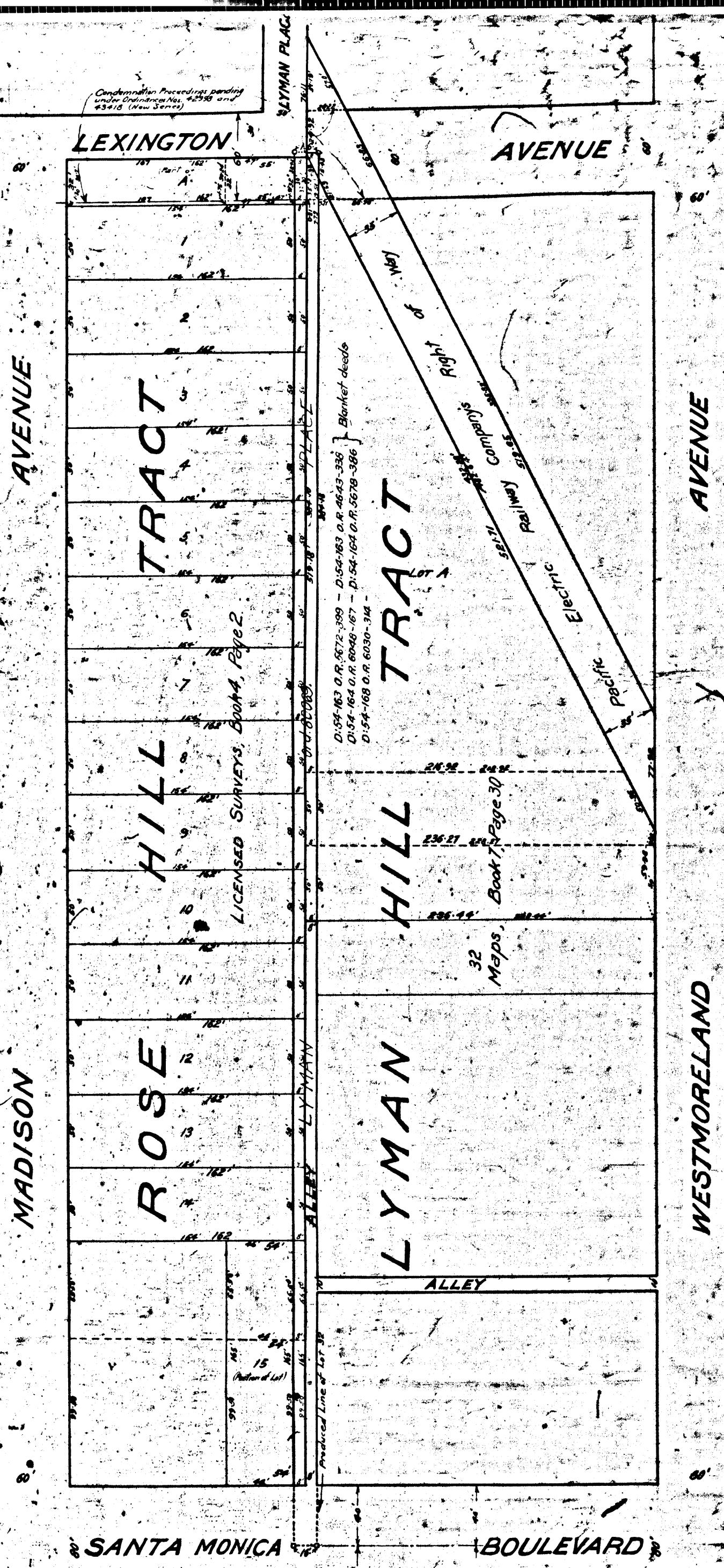


RETURN TO CITY ENGINEER'S OFFICE
CITY OF LOS ANGELES
PROJECT OF THE

0708

0709



MAP
SHOWING
LAND TO BE CONDEMNED FOR THE OPENING
WIDENING AND EXTENDING OF THE FIRST
ALLEY
WESTERLY OF
WESTMORELAND AVENUE
BETWEEN
LEXINGTON AVENUE
AND
SANTA MONICA BOULEVARD
IN THE
CITY OF LOS ANGELES
CALIF.

In accordance with Ordinances Nos. 47703 and 48270 (New Series)
John A. Griffin, City Engineer April, 1924
Scale: - 1 inch = 50 feet

Note: Land to be condemned shown color red.
Dotted lines and figures show where the actual
holdings differ from the recorded subdivisions.

Superior Court Case No. 145851
Suit for Condemnation
Filed June 13th 1924
City of Los Angeles Plff.
vs.
Frank X. Marek et al Def.

Pending June 30th 1924
Pending Feb. 18th 1925
Interlocutory Judgment May 27th 1925 at 5
Pending May 12th 1926
Judgment Book 573-359
Pending Apr. 6th 1927

0708

RETURN TO CITY ENGINEER'S OFFICE
CITY OF LOS ANGELES
PROJECT OF THE

0709