

MAP

SHOWING LAND SOUGHT TO BE CONDEMNED FOR THE OPENING AND WIDENING OF NINTH STREET BETWEEN THE SOUTH LINE OF FRONT STREET AND THE NORTH LINE OF VALLEY BOULEVARD OF THE CITY OF ALHAMBRA, LOS ANGELES COUNTY, CALIFORNIA.

Superior Court Case No. 146382
 Suit for Condemnation
 Filed June 20th 1924
 City of Alhambra Plff.

Vs.
 Edward B. Mang et al Def.

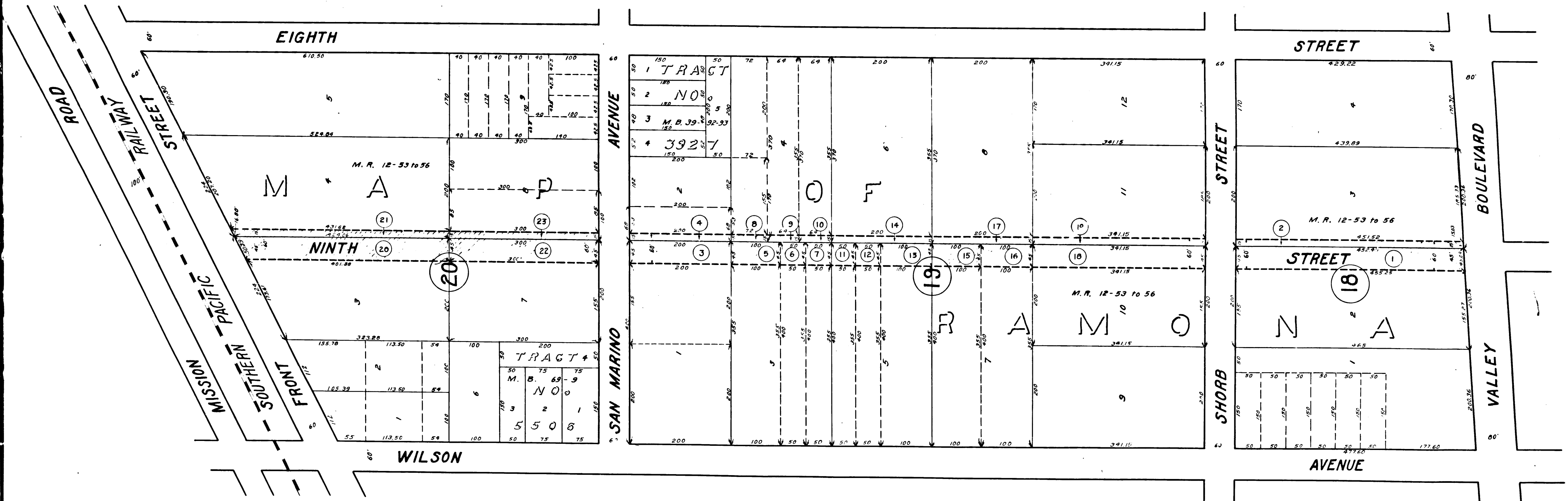
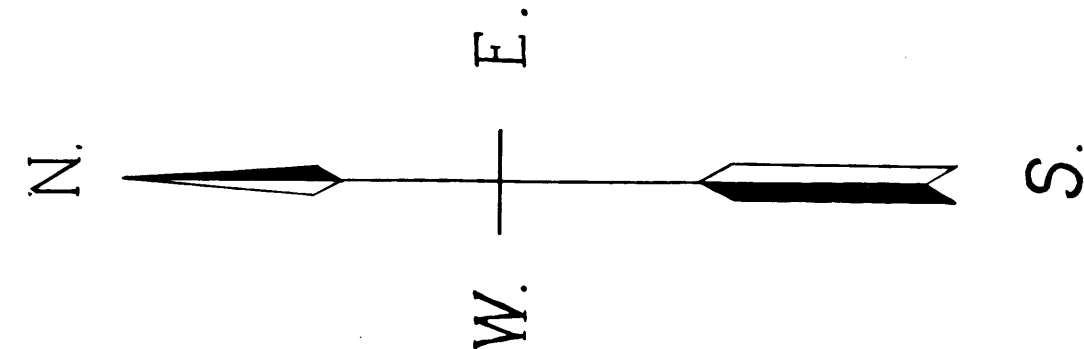
Pending July 1st 1924
 Pending Feb. 18th 1925

Final judgment in favor of Plaintiff as per map, rendered February 10th 1926.

ALHAMBRA, CAL. JUNE 1924
 SCALE 1"=100'
 T. B. DOWNER
 City Engineer

D:51-257 O.R. 5565-228
 A.443

Note: Shaded portion shows land sought to be condemned. Light dotted lines and dimensions thereto, show actual holdings in those cases where they differ from the recorded subdivisions.



C.F. 1120-

EXHIBIT "C"
 Sht. 43

VENICO
 PASADENA, CAL.

VENICO
 PASADENA, CAL.

957

957