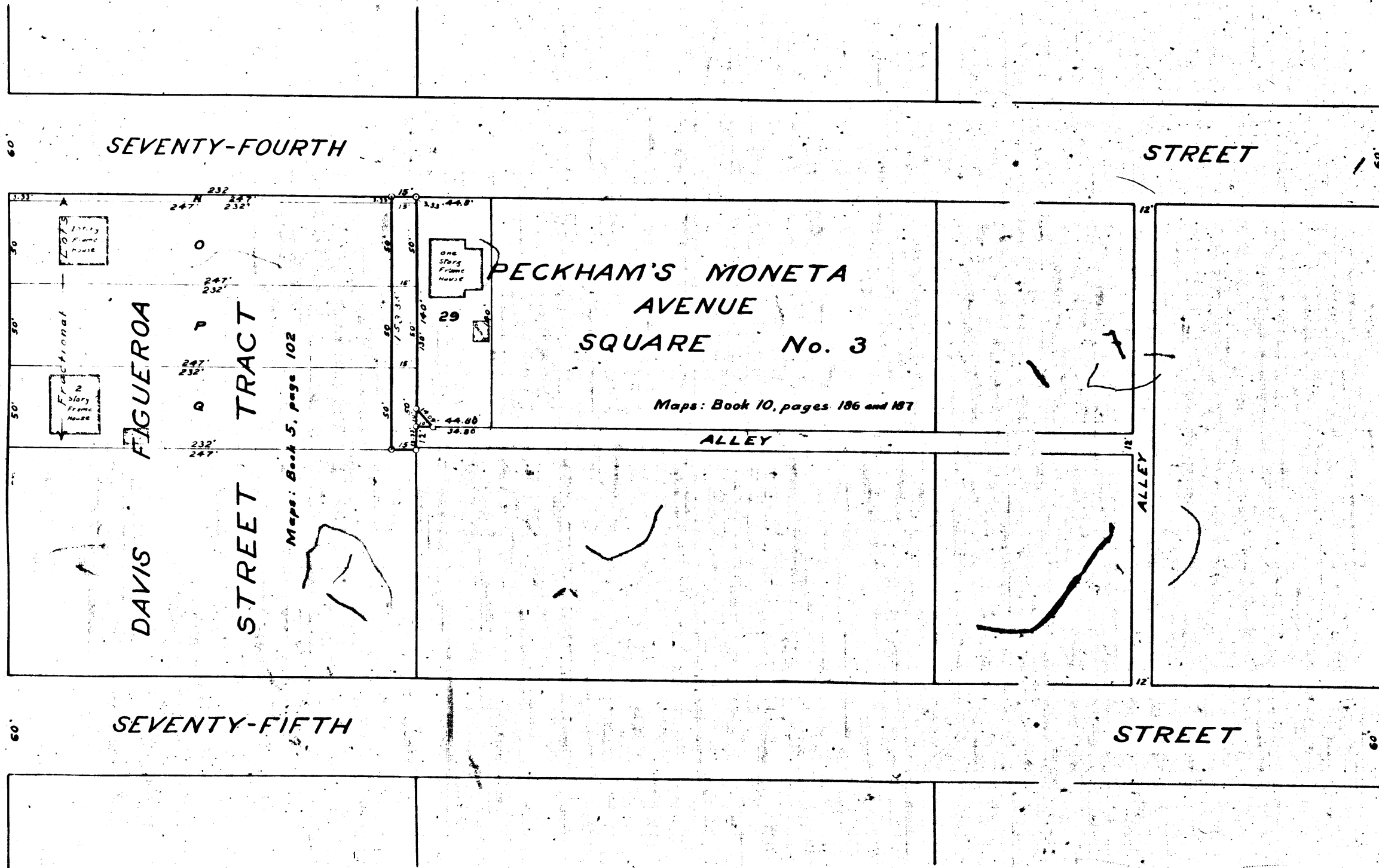


100'  
STREET

FIGUEROA

100'



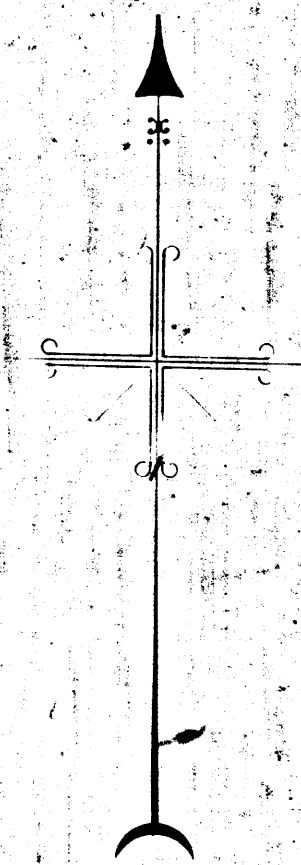
100'  
AVENUE

MONETA

100'

**MAP**  
 SHOWING LAND TO BE CONDEMNED  
 FOR THE OPENING OF AN  
**ALLEY**  
 BETWEEN  
 MONETA AVENUE AND FIGUEROA STREET  
 FROM  
 SEVENTY-FOURTH STREET to the alley southerly  
 IN THE  
**CITY OF LOS ANGELES, CAL.**

IN ACCORDANCE WITH ORDINANCES NUMBERS  
 47357 AND 47932 (New Series.)  
 John A. Griffin, City Engineer. April, 1924.  
 Scale: 1 inch = 50 feet.  
 NOTE: Land to be condemned shown colored Red.



Superior Court Case No. 146309  
 Suit for Condemnation  
 Filed June 19<sup>th</sup> 1924  
 City of Los Angeles Plfff.  
 Vs.  
 Ida Cooper et al. Def.

Pending July 3<sup>rd</sup> 1924  
 Pending Feb 18<sup>th</sup> 1925  
 Sheet # 7  
 Final Judgement in favor of Plfff, as per map, rendered Nov 4, 1925  
 D-47-124, O.R. 5163-278

A 2062