

151 A

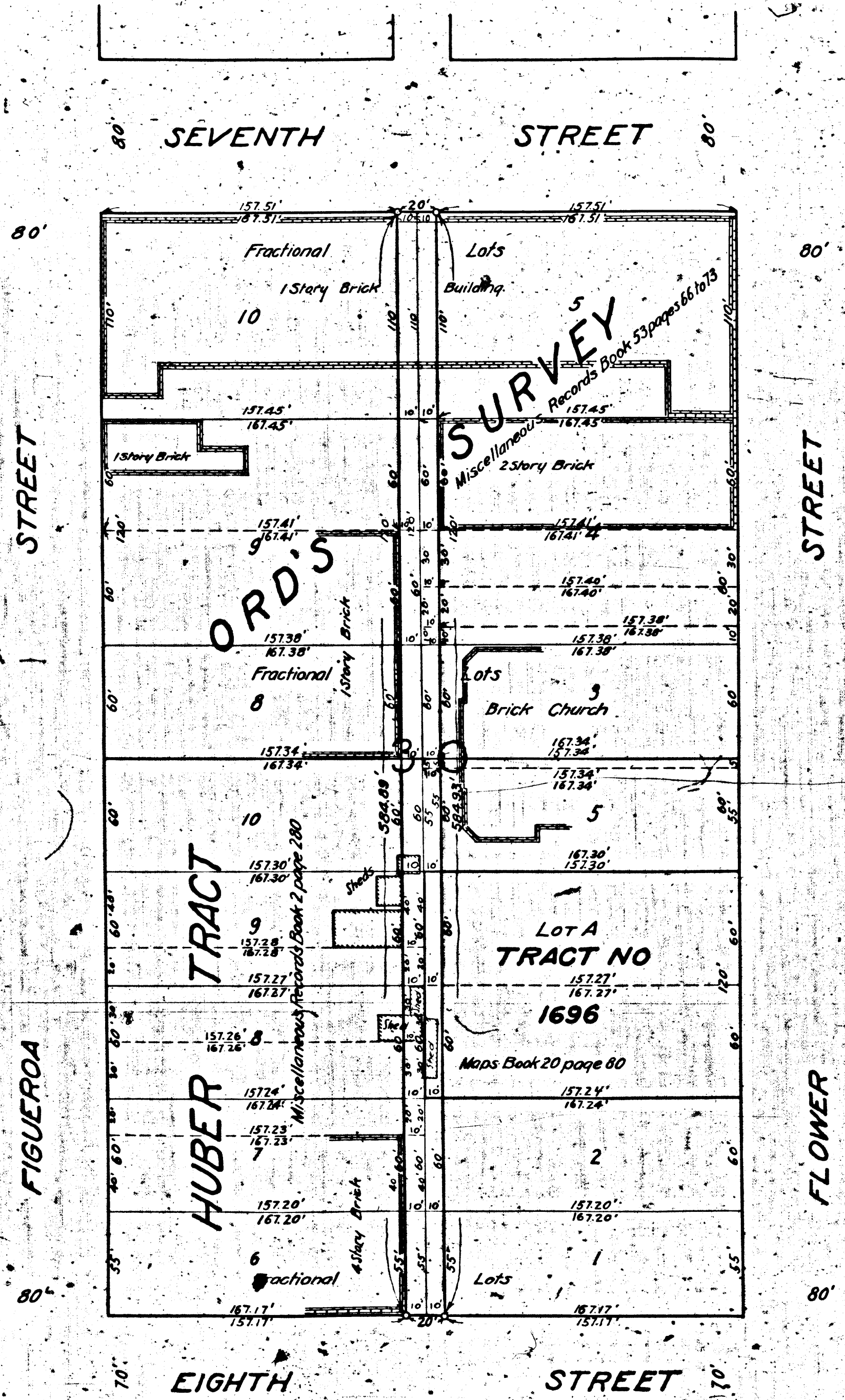
151 A

151 A

151 A

DEPARTMENT OF PUBLIC WORKS
CITY OF LOS ANGELES
PROPERTY OF THE

RECEIVED IN CITY ENGINEER'S OFFICE
CITY OF LOS ANGELES
PROPERTY OF THE



MAP
 SHOWING THE LAND TO BE CONDEMNED
 FOR THE OPENING OF
 AN
ALLEY
 BETWEEN
 FLOWER STREET AND FIGUEROA STREET
 FROM
 THE SOUTHWESTERLY LINE OF SEVENTH STREET
 TO
 THE NORTHEASTERLY LINE OF EIGHTH STREET
 IN THE
 CITY OF LOS ANGELES, CAL.

In accordance with Ordinances Nos. 47453 and 48051 (New Series)
 JOHN A. GRIFFIN, CITY ENGINEER. MAY, 1924
 Scale 1 Inch = 50 Feet

NOTE - Land to be condemned shown colored red
 Broken lines and figures show where the holdings
 differ from the recorded subdivisions.

Superior Court Case No 146513
 Suit for Condemnation
 Filed June 23rd 1924
 City of Los Angeles Pltff.
 Vs.
 First Baptist Church of L.A. Calif. et al Def.
 Pending July 3rd 1924.
 Dismissed Oct 28th 1924.



A 2147

5ht-3