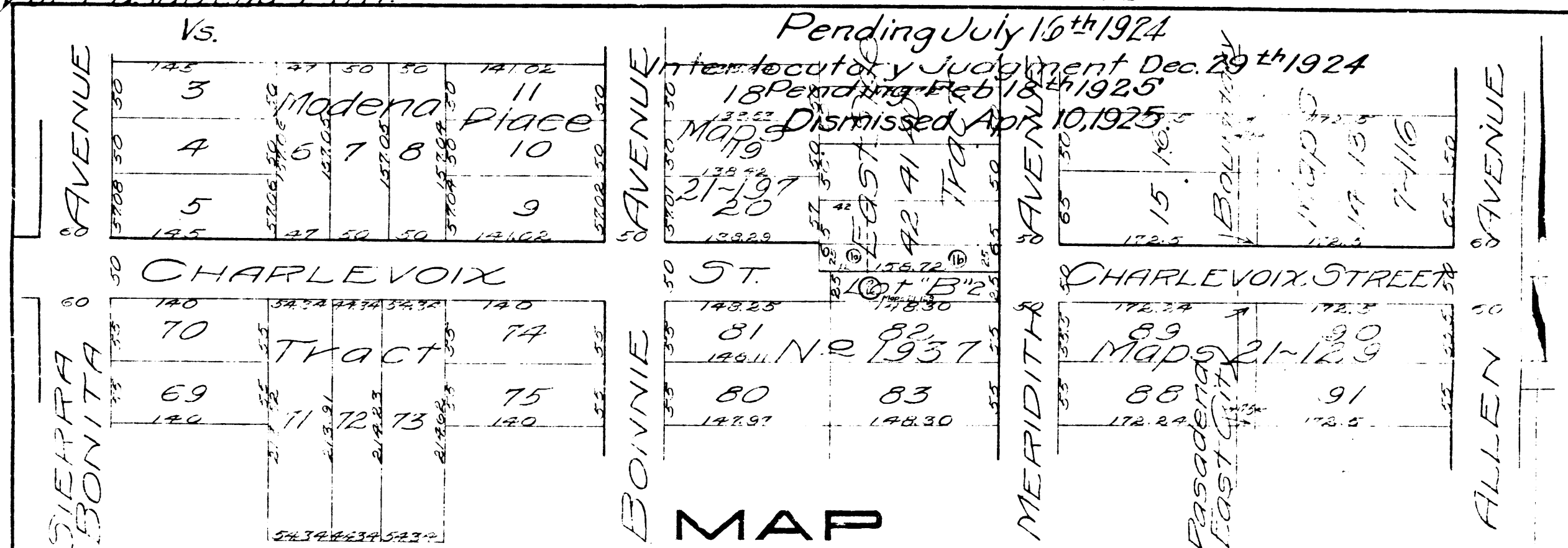


Superior Court Case No. 141266
 Suit for Condemnation
 City of Pasadena Plff.

Harvey Mason Herrin et al. Def.
 Filed July 3rd 1924

Map No. S42
 A 65



Showing land sought to be condemned for the opening and extending of CHARLEVOIX STREET from the west line of lot 42, East Side Tract as per map recorded in Book 7, page 116, of Maps Records of Los Angeles County, to the west line of Meridith Avenue, Pasadena, California.

Pasadena, California, November 1916. R.V. Orbison, City Engineer

Note: - Scale -
 1 inch = 100 feet
 Orange tinting shows land sought to be condemned. EXHIBIT "C"

C.F. 1130-

