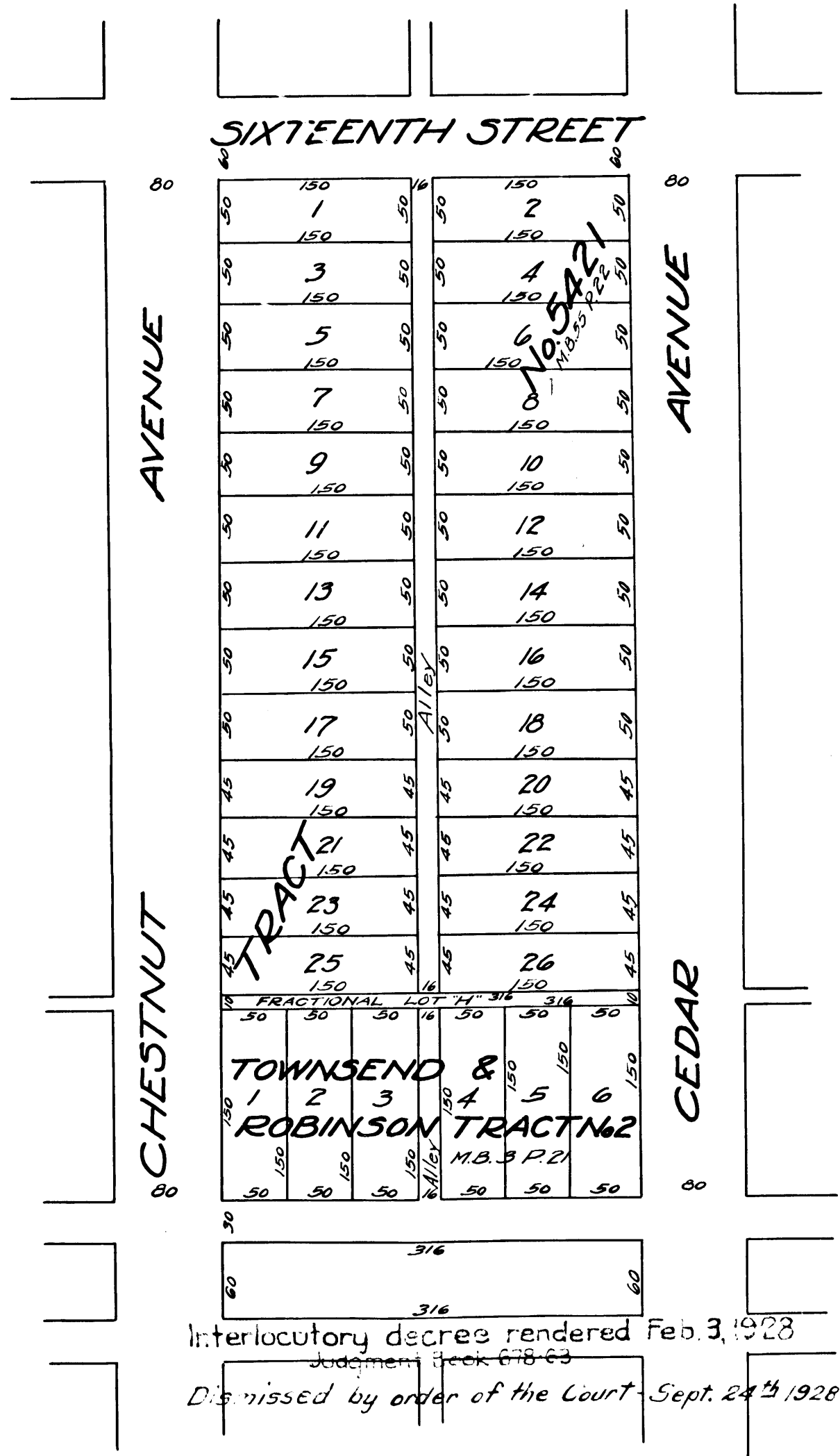


C.F. 1133 -



SIXTEENTH STREET

AVENUE

AVENUE

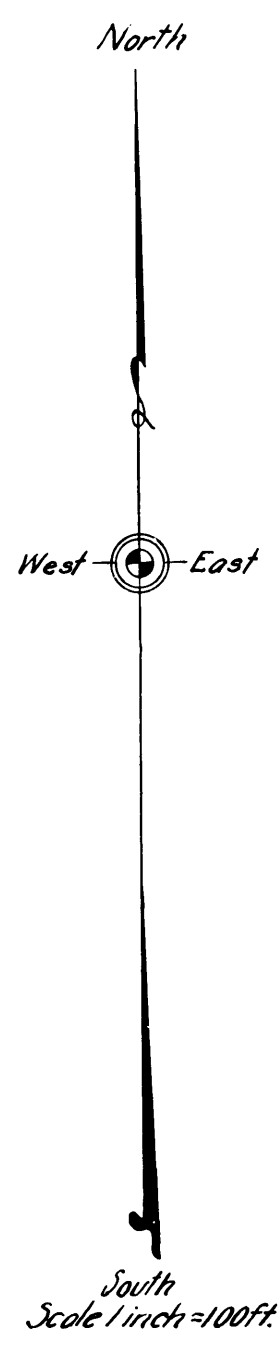
CHESTNUT

CEDAR

150	150
1	2
150	150
3	4
150	150
5	6
150	150
7	8
150	150
9	10
150	150
11	12
150	150
13	14
150	150
15	16
150	150
17	18
150	150
19	20
150	150
21	22
150	150
23	24
150	150
25	26
150	150

Interlocutory decree rendered Feb. 3, 1928
 Judgment Book 618 C3
 Dismissed by order of the Court Sept. 24th 1928

Superior Court Case No. 148165
 Suit for Condemnation
 Filed July 16th 1924
 City of Long Beach Plaintiff
 Vs.
 F. E. Robinson et al. Defendants
 Pending July 24th 1924
 Pending Feb. 18th 1925
 Pending May 1, 1926
 Pending Apr. 1, 1927



Sh. 30

