

H105

VEMCO PASADENA CALIF.

957

REVISION COURT CASE

COURT CASE NO 1119

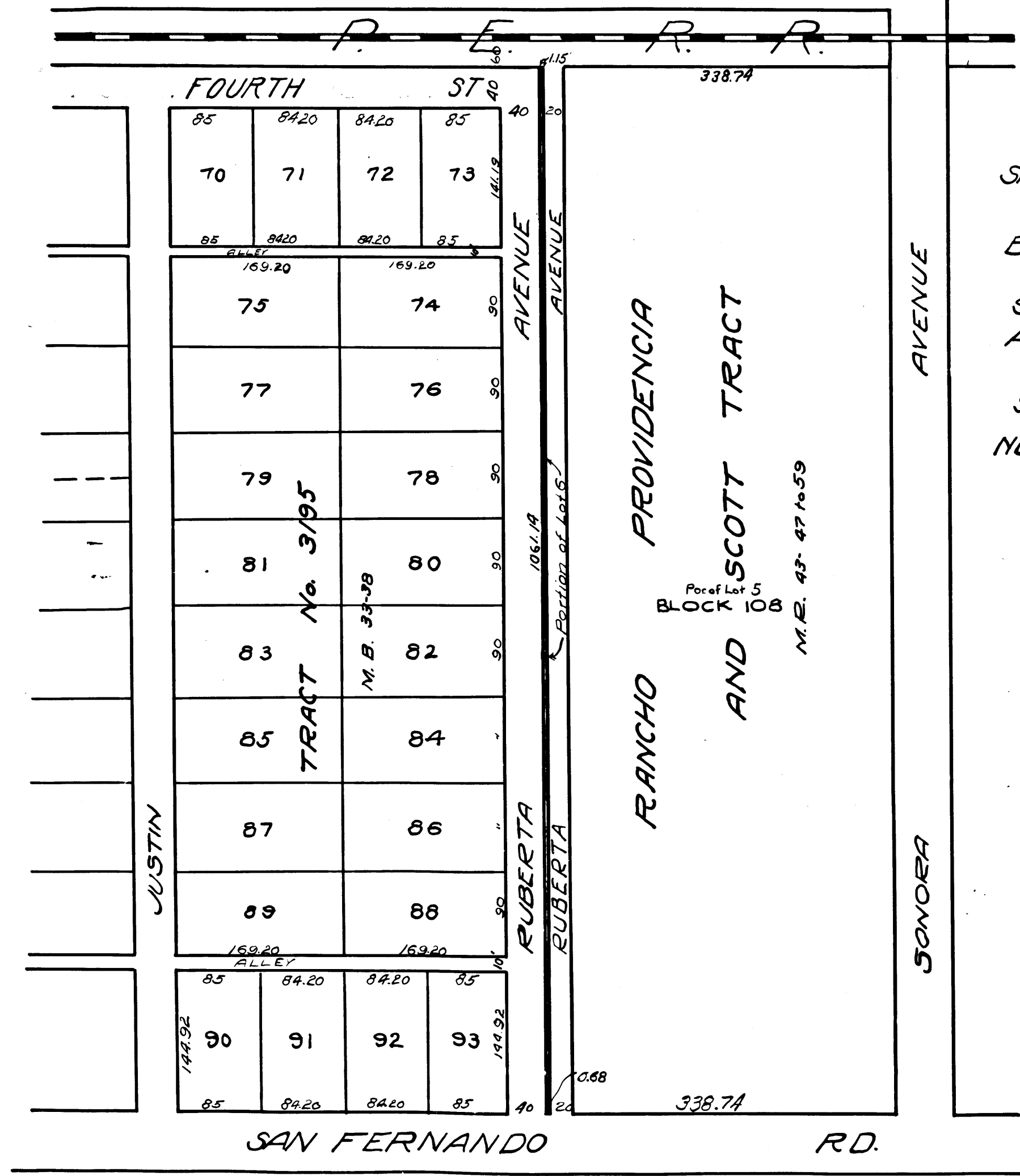


EXHIBIT 'C'

PLAT No. 1119

SHOWING LAND TO BE TAKEN FOR THE WIDENING OF
RUBERTA AVENUE
 BETWEEN SAN FERNANDO ROAD AND THE PACIFIC
 ELECTRIC RAILWAY RIGHT OF WAY, ALSO
 SHOWING DISTRICT TO BE ASSESSED TO PAY THE COSTS
 AND EXPENSES FOR SAID WIDENING, ALL IN THE
CITY OF GLENDALE, CALIFORNIA
 SCALE 1/4"=100' APRIL 1924

NOTE:
 Red shows land to be taken for said widening

Superior Court Case No. 150448
 Suit for Condemnation
 Filed Aug. 16, 1924
 City of Glendale, Pliff.
 Vs.
 Arthur Campbell, et al. Def.
 Pending Aug. 27, 1924
 Dismissed Jan. 6th 1925

C.F. 1146 -

REVISION COURT CASE NO 1119

H105

VEMCO PASADENA CALIF.

957