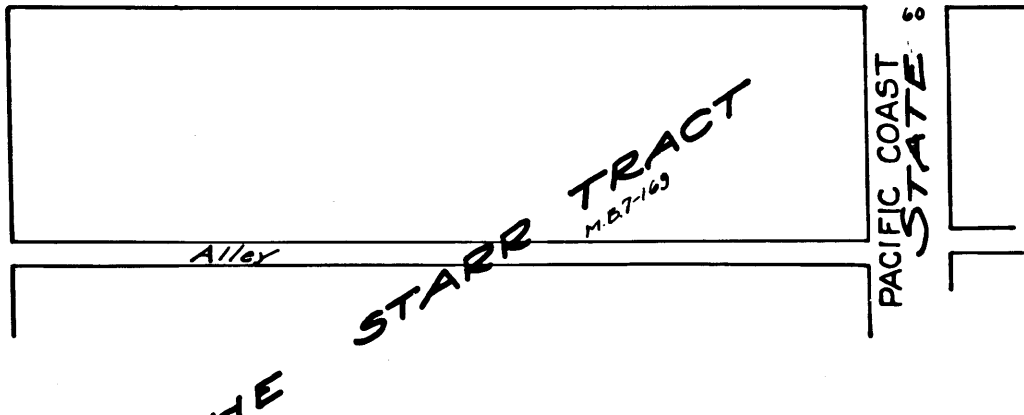
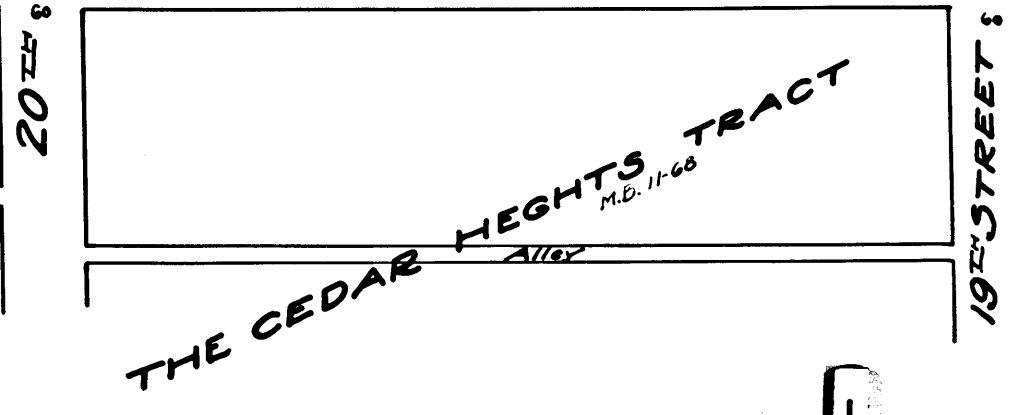
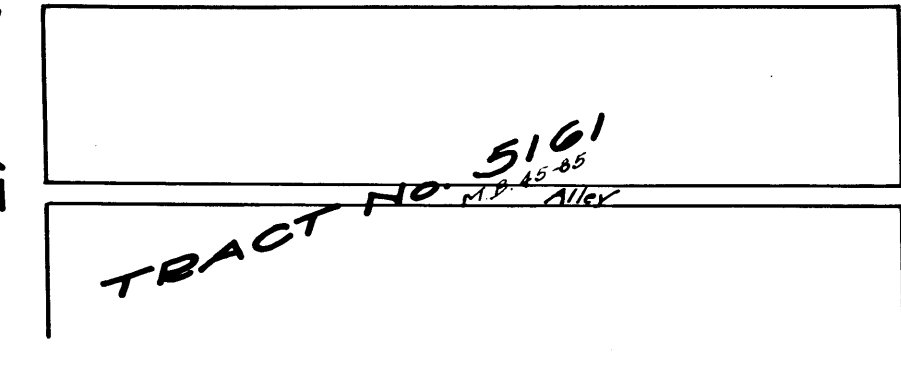
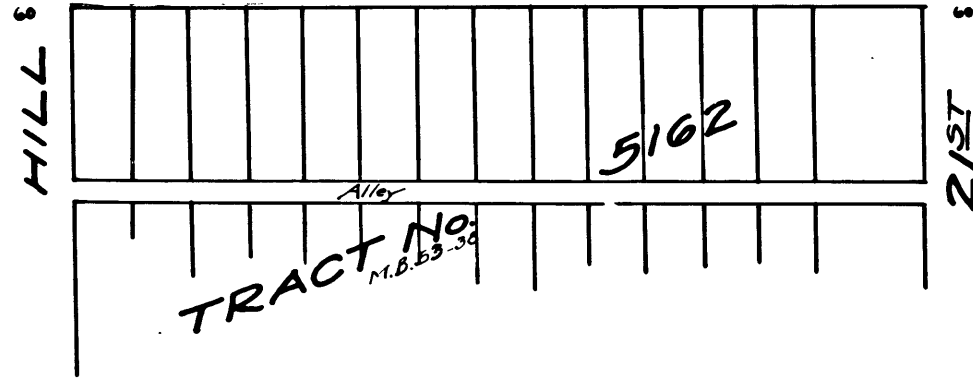
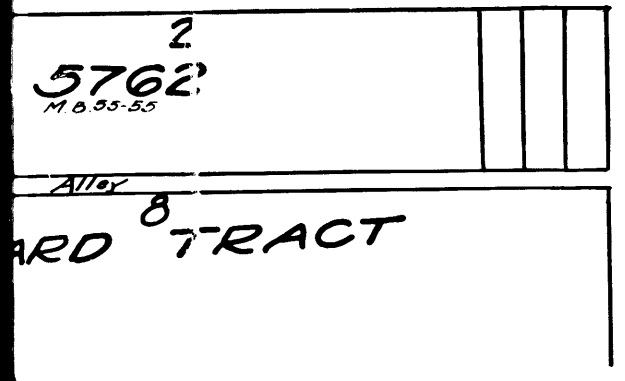
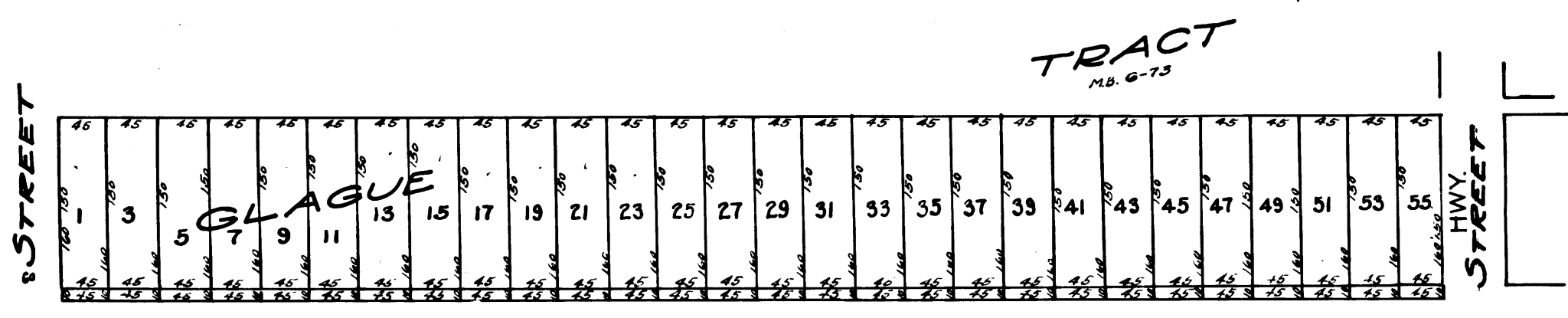
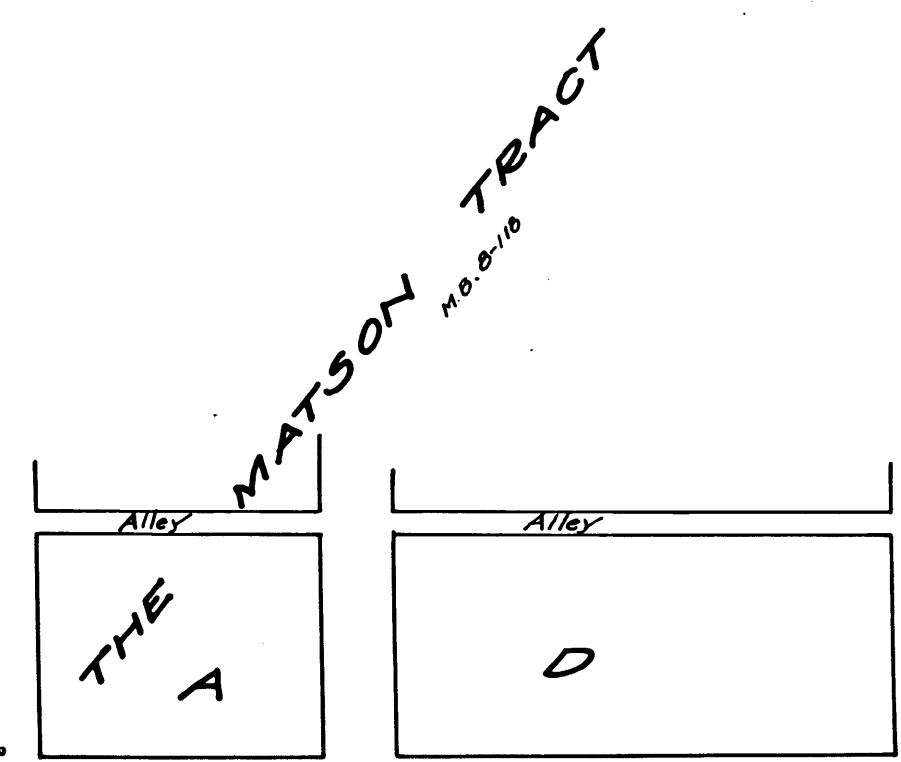
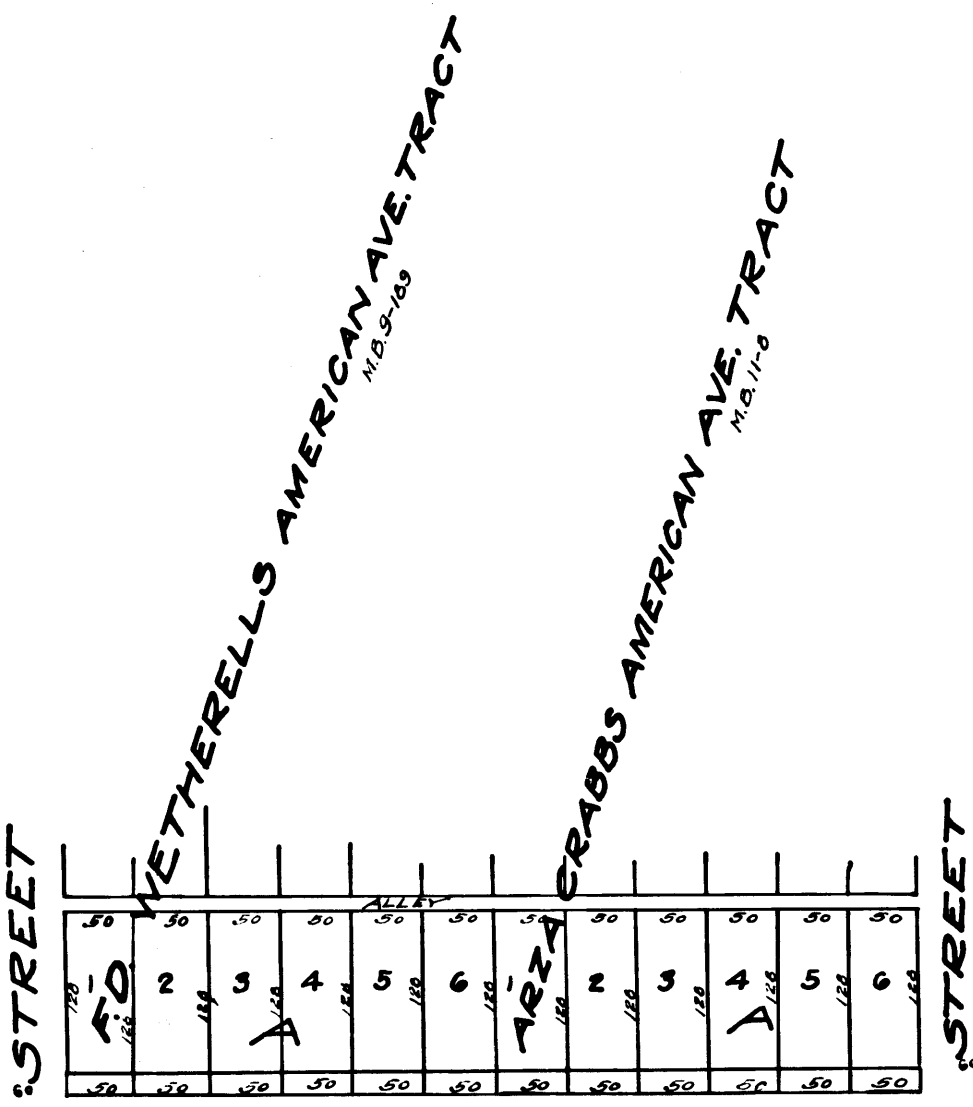
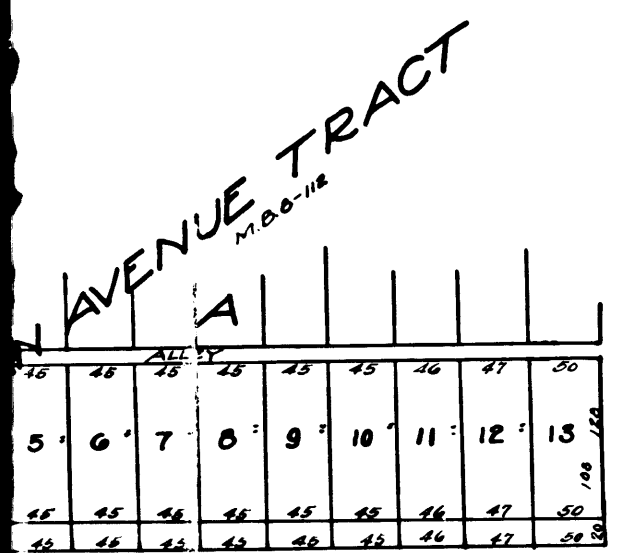
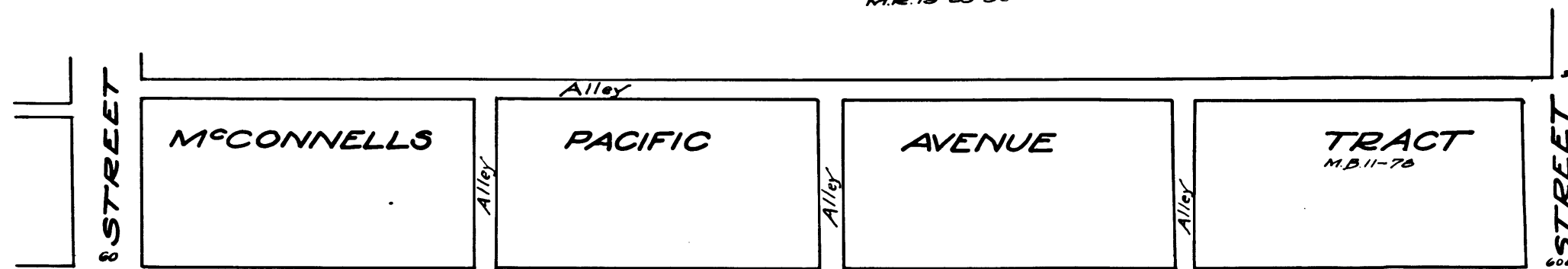


0ft
North

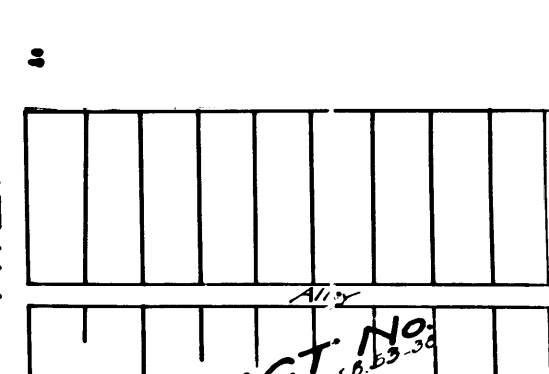
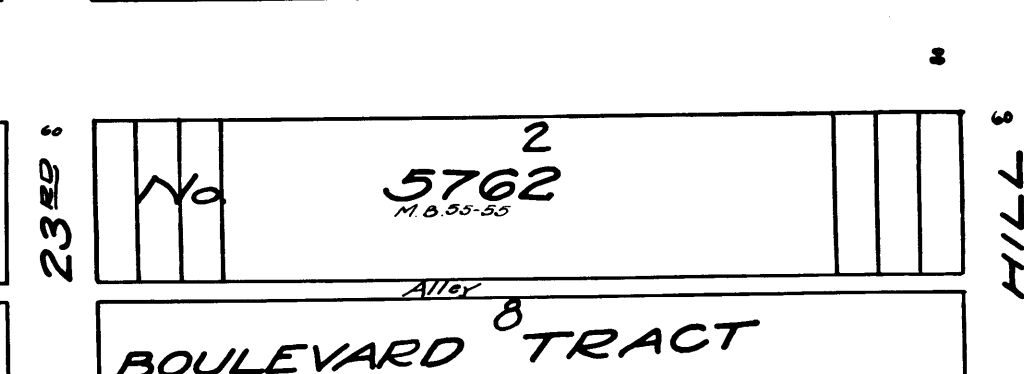
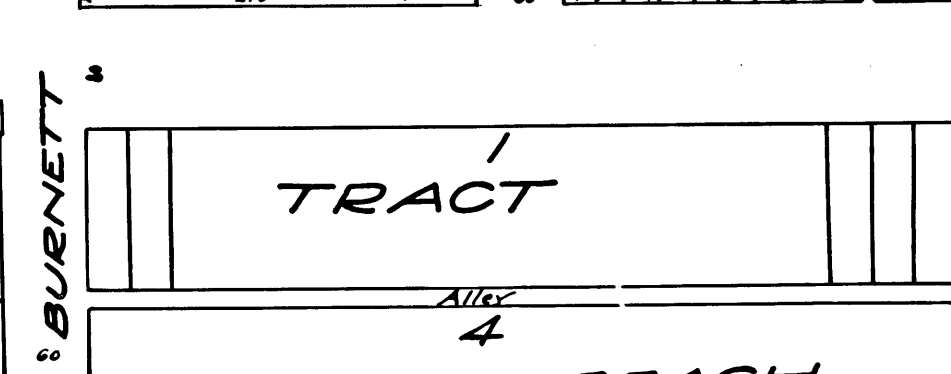
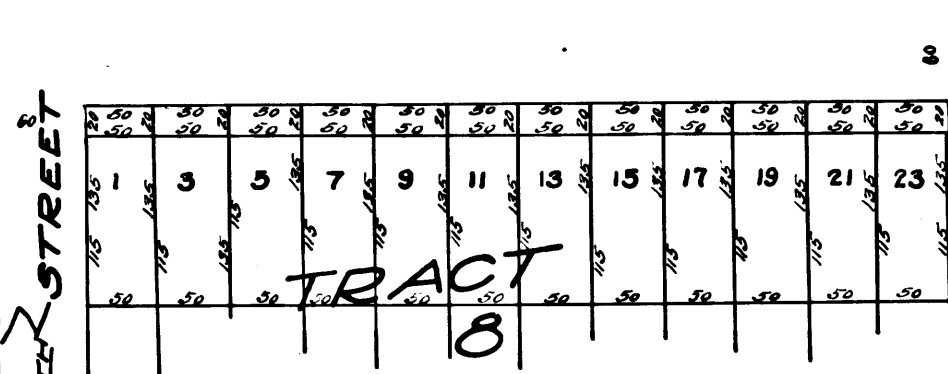
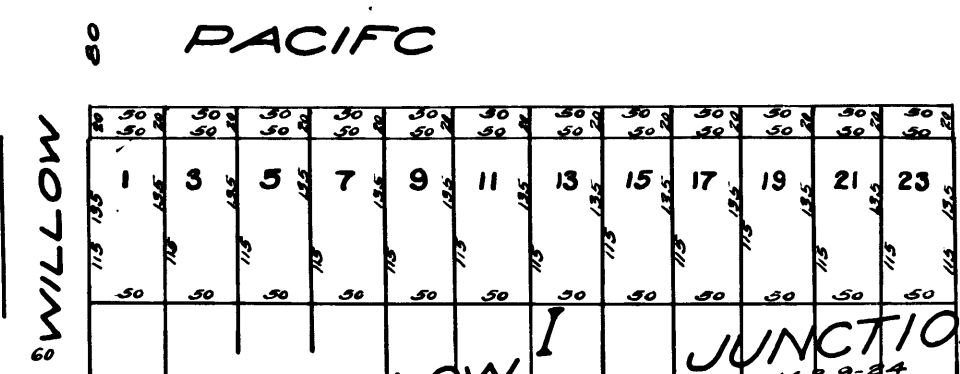
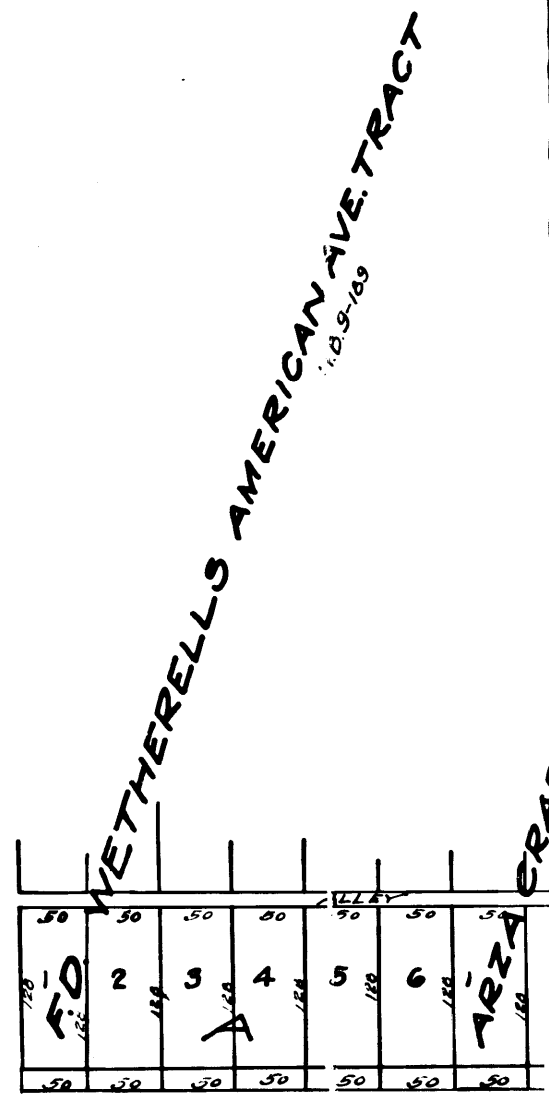
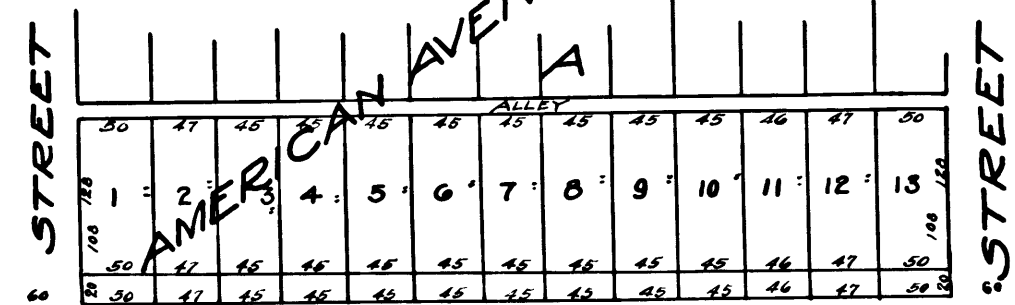
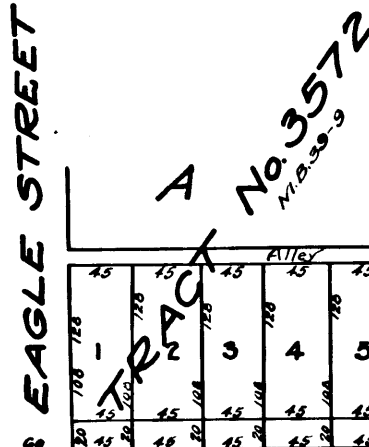
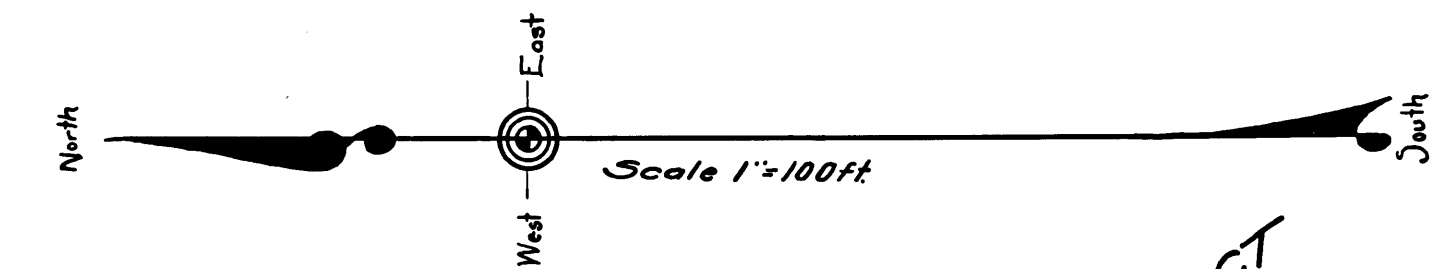


C.F. 1148 -

AMERICAN COLONY TRACT
M.R. 18-29-90



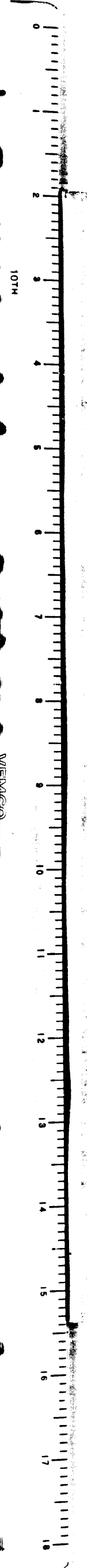
Fractional lot No. 92
Dedicated by M.B. 88-47



2
C.F. 1148 -

7

st. purp.
11
92
27.



Superior Court Case No. 150527
 Suit for Condemnation
 Filed Aug. 18th 1924
 City of Long Beach Plff.

vs.
 H. A. Vannoy et al Def.

Pending Sept 4th 1924
 Pending Feb. 18th 1925

Note - Land shown in Vermillion to be taken for St. purp.

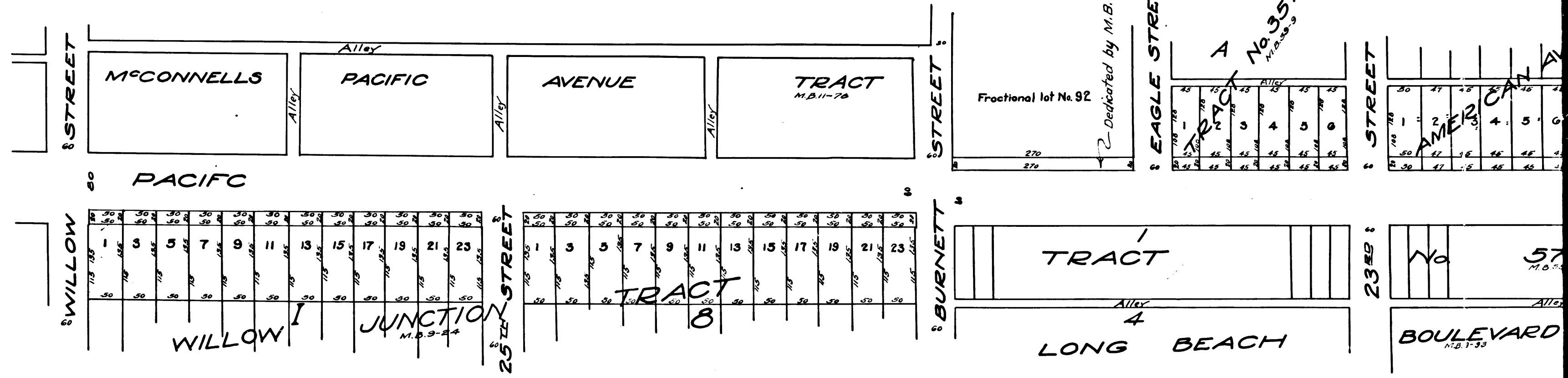
Interlocutory Judgment on all
 parcels March 24th 1926
 Pending May 1st 1926

Judgment Book 605-356
 Final Judgment in favor of Plfff, as per
 map, with exception of fractional lot No 92
 American Colony Tract, rendered Mar. 1, 1927.

D. 59-39 O.R. 6602-177.

Sheet 30

AMERICAN COLONY TRACT
 M.R. 18-29-90



3
 C.F. 1148 -