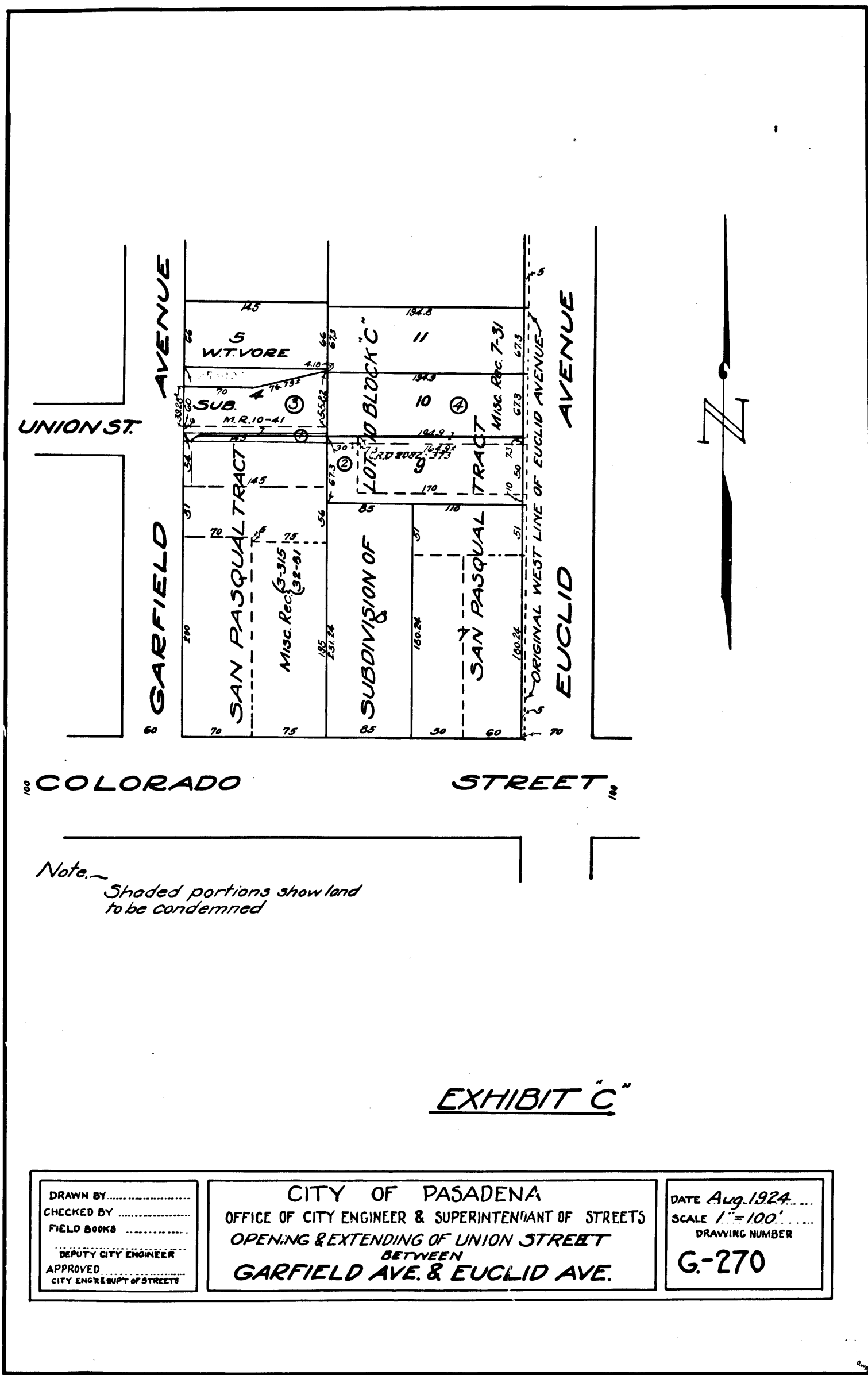


No. 151210
01/21/20



C.F. 1151 -

Superior Court Case No. 151210
 Suit for Condemnation
 Filed Aug. 28th 1924
 City of Pasadena Plff.
 Vs.
 Madeline F. Wills et al Def.
 Pending Sept. 6th 1924
 Pending Feb. 18th 1925
 Interlocutory Judgment on all parcels
 April 20th 1926
 Pending May 1st 1926
 Final Judgment in favor of Plff as per
 map rendered November 29, 1926.
 D:56-25 O.R. 6154-211

S42
 A-53
 Pasadena

Index #8

sht. 42