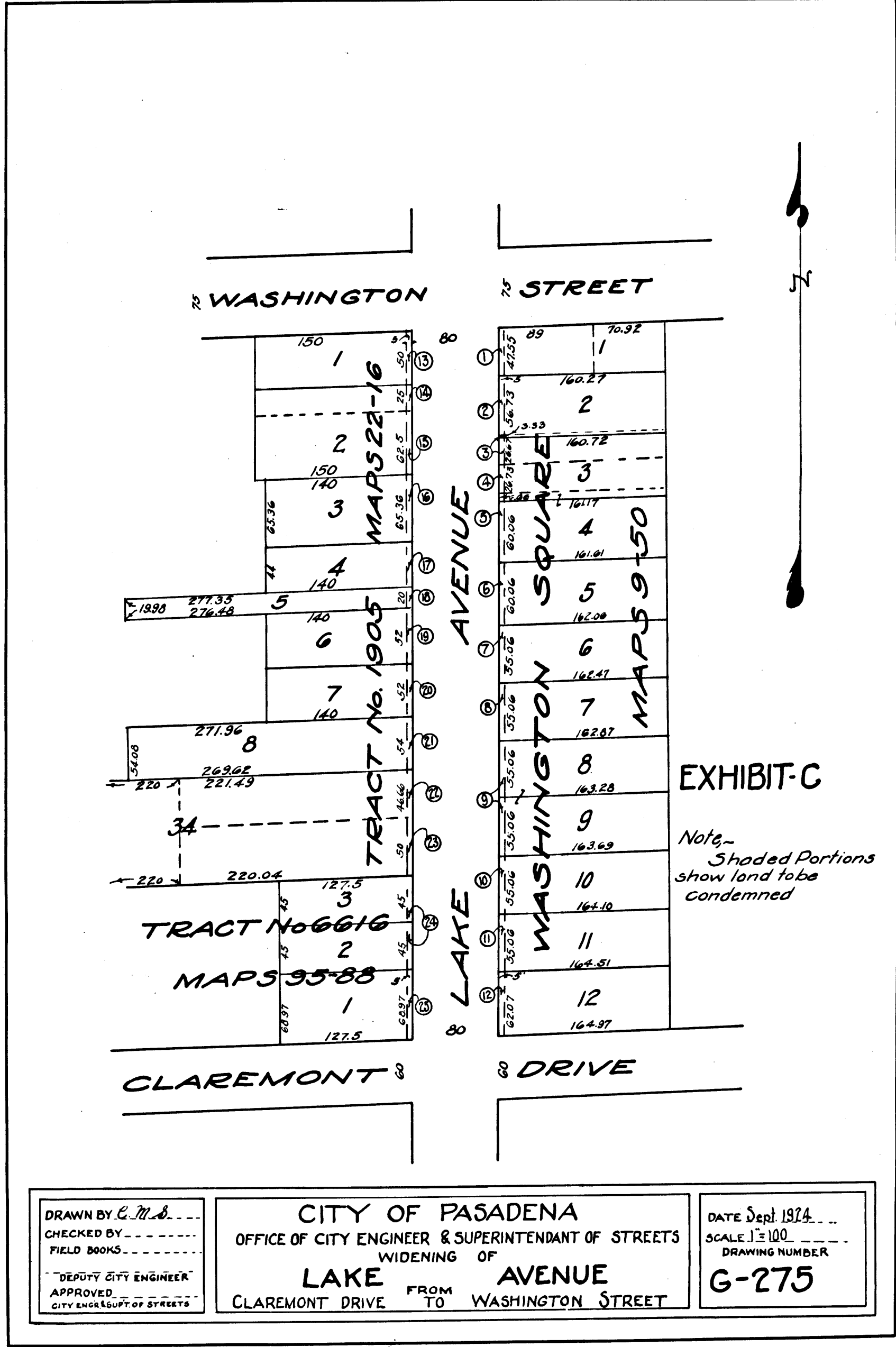


C.F. 1155-



DRAWN BY <i>C.M.S.</i>	CITY OF PASADENA OFFICE OF CITY ENGINEER & SUPERINTENDANT OF STREETS WIDENING OF LAKE AVENUE CLAREMONT DRIVE FROM TO WASHINGTON STREET	DATE Sept. 1924
CHECKED BY FIELD BOOKS		SCALE 1" = 100'
DEPUTY CITY ENGINEER APPROVED		DRAWING NUMBER G-275
CITY ENGINEER OF STREETS		

Index # 8
 Superior Court Case No. 152096
 Suit for Condemnation
 Filed Sept. 10th 1924
 City of Pasadena Pltff.
 Vs.
 Richard J. M & Mahon et al Def.
 Pending Sept 19th 1924
 Pending Feb. 18th 1925
 Interlocutory Judgment July 30th 1925
 Pending May 1st 1926
 Judgment Book 597-211
 Final judgment in favor of Plaintiff
 as per map, rendered Aug. 6th 1926
 Judg. Bk. 628-10

A-363

Sht. 42

Superior Court Case No. 152096
Filed Sept. 10, 1924

City of Pasadena vs. Richard J. Mahon & Richard J. Mahon