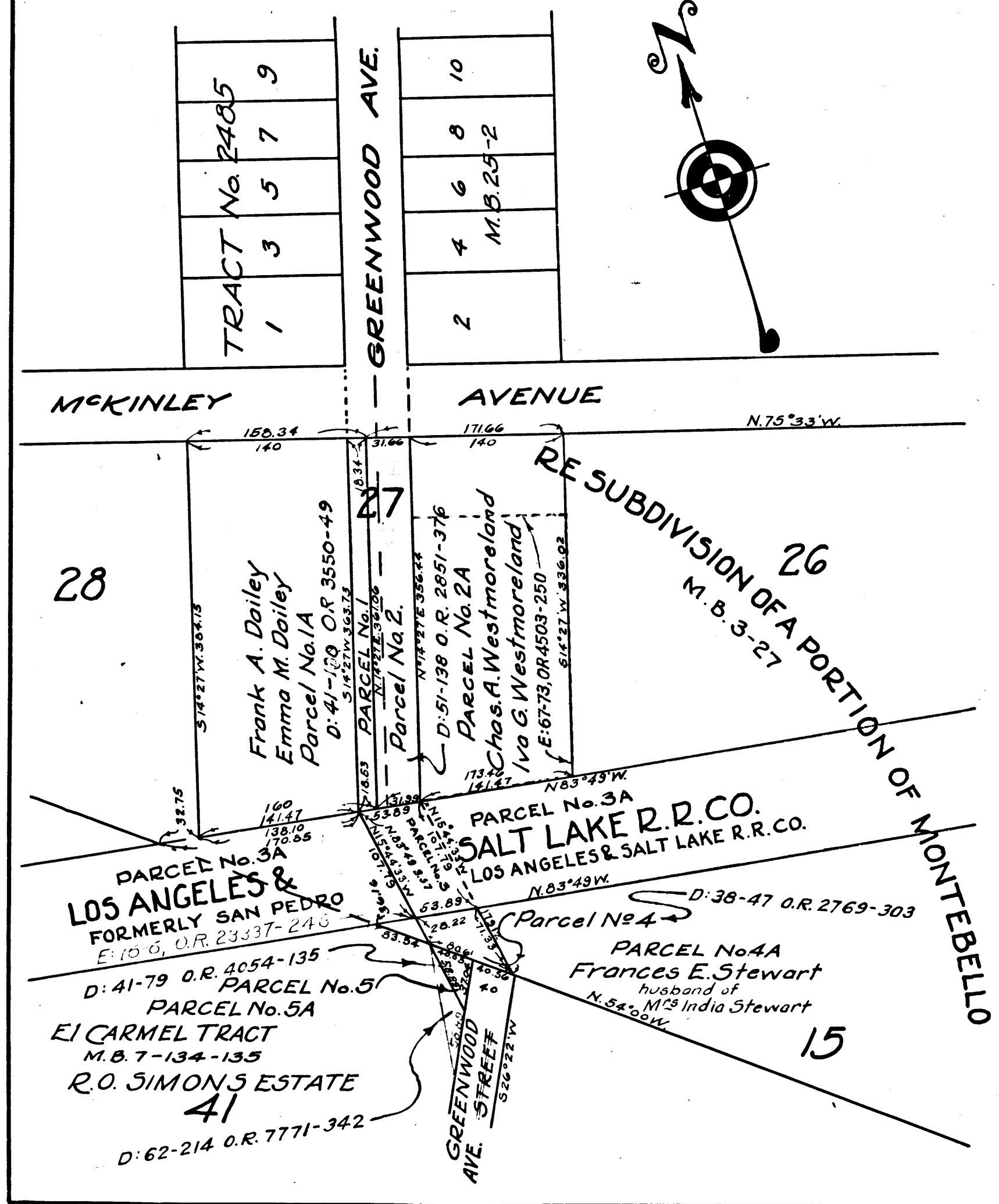


Exhibit A  
 Map showing  
 location general route and termini of  
 the right of way sought to be Con-  
 demned in the  
 entitled action by the  
 City of Montebello California  
 also all parcels of land to be condemned and all larger parcels of which  
 they are a part of  
 Note, Land sought for Street purposes shown colored red



Superior Court Case No. 125822  
 Suit for Condemnation  
 Filed July 21<sup>st</sup> 1923  
 City of Montebello Pltff.  
 Vs.  
 Frank E. Dailey et al Def.

Pending Aug. 1<sup>st</sup> 1923  
 Final judgment in favor of Plaintiff  
 as to parcel No. 1 rendered Sept. 18, 1924.  
 D: 41-130 O.R. 3550-49  
 Case dismissed as to parcel No. 3. Aug.  
 27<sup>th</sup> 1924.

Sht- 36

C.F. 1161 -