

Superior Court Case No. 158616
 Suit for Condemnation
 Filed Dec. 10th 1924
 County of Los Angeles Plff.
 Vs.
 Hermon R. Baird et al Def.
 Pending Dec. 18th 1924
 Pending Feb. 18th 1925
 Final Judgment as per map rendered
 Feb. 26th 1926
 Judg. Bk. 594-260

COUNTY
 STREET OPENING DISTRICT NO. 12
 MAP OF
**PROPOSED OPENING & EXTENDING
 OF OTIS AVENUE**

BETWEEN
60TH ST. & SLAUSON AVE.

SHOWING
 The exterior boundary of the District to be assessed therefor under the
 provision of the County Street Opening Act of 1923, Approved May 11, 1923
 SCALE, 1" = 100'
 JUNE, 1924

J.E. ROCKHOLD - COUNTY SURVEYOR

Submitted

Adware
 Senior Engineer

Approved

J.E. Rockhold
 County Surveyor

Approved as to form
 Edward T. Bishop - County Counsel
 by *Edward T. Bishop*

LEGEND

District Boundary Line ———
 Land sought to be condemned colored red

I hereby certify that the Board of Supervisors of Los Angeles
 County did, on the 18 day of Aug. 1924, by resolution, duly
 adopted, approve the accompanying map of the assessment district
 of County Street Opening District No. 12 of the County of Los Angeles
 for the opening and extending of Otis Ave.

Filed Aug. 18, 1924 in the
 office of the County Surveyor
 of Los Angeles County.
 J.E. ROCKHOLD - COUNTY SURVEYOR
 by *Adware*
 Deputy

CLERK OF BOARD OF SUPERVISORS
 OF SAID COUNTY OF LOS ANGELES
 by *W. Arnet B. Deatty*
 Deputy.

A459

Sh. 357

C.F. 1179 -

O. & W. No. 12	
Drawn by	H. S. Duey June 1924
Traced by	G. W. Mook June 1924
Checked by	H. S. Duey June 1924

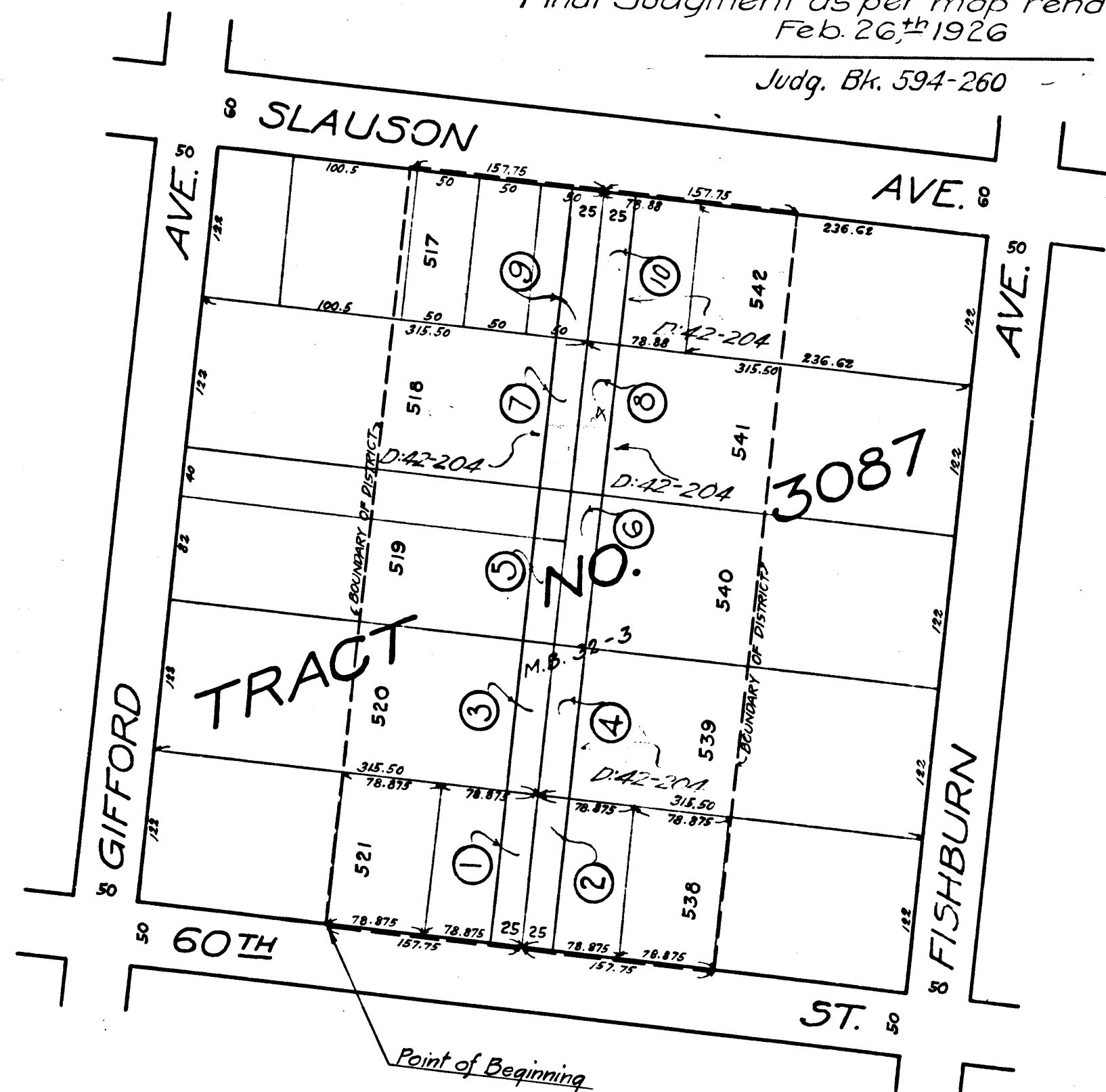


EXHIBIT "A"

Number in circles indicate parcels sought
 to be condemned.
 The parcels are described in Paragraph
 VII of the complaint.
 Portion colored red shows location, gen-
 eral route and termini of Public Road
 to be condemned.