

Superior Court Case No. 157208  
 Suit for Condemnation  
 Filed Nov. 20, 1924  
 County of Los Angeles, Plaintiff  
 VS  
 Community State Bank of Bell, et al, Defts.  
 Final Judgment in favor of  
 Plaintiff, rendered Mar. 16, 1926  
 Judgment Book 605-334.

COUNTY  
 STREET OPENING DISTRICT NO. 7.  
 MAP OF  
 PROPOSED OPENING & EXTENDING  
 OF RIVERSIDE AVE.

BETWEEN  
 RANDOLPH ST. & 61<sup>ST</sup> ST.

SHOWING

The exterior boundary of the District to be assessed therefor  
 under the provision of the County Street Opening Act of 1923,  
 Approved May 11, 1923.

SCALE 1" = 100'

APRIL 1924

J.E. ROCKHOLD - COUNTY SURVEYOR

Submitted: *Alwanna*  
 Senior Engineer

Approved: *J.E. Rockhold*  
 County Surveyor

Approved as to form  
 Edward T. Bishop, County Counsel  
 by *Wm. J. ...* Chief Deputy

LEGEND

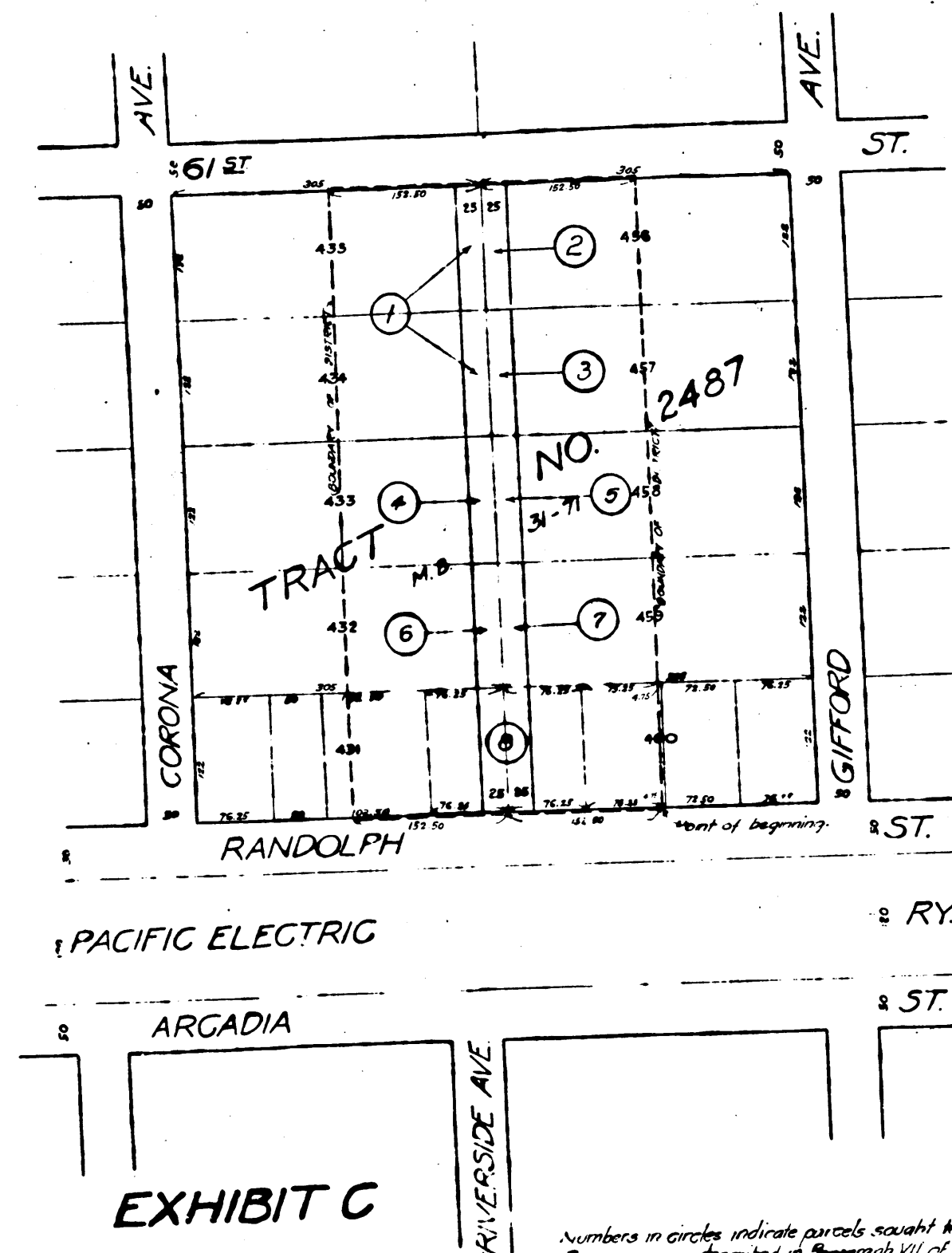
District Boundary Line -----  
 Land sought to be condemned colored red.

I hereby certify that the Board of Supervisors of Los Angeles  
 County did, on the 2<sup>nd</sup> day of April, 1924, by resolution, duly  
 adopted, approve the accompanying map of the assessment district  
 of County Street Opening District No. 7 of the County of Los  
 Angeles for the opening & extending of Riverside Ave.

CLERK OF BOARD OF SUPERVISORS OF SAID  
 COUNTY OF LOS ANGELES  
 by *...* Deputy

INDEX 7

O. & W. No. 7	
Drawn by M.E. Beale	April 1924
Traced by G.W. Mook	Apr. 1924
Checked by H.S. Ducey	Apr. 1924



Numbers in circles indicate parcels sought to be condemned  
 The parcels are described in Paragraphs VIII of the Complaint  
 The line shown shows location, general route and  
 termini of public use to be established

C.F. 1180 -