

Sht. 33
A-351

COUNTY
STREET OPENING DISTRICT NO. 13.
MAP OF
PROPOSED OPENING
OF ARKANSAS AVENUE
BETWEEN
SOMERSET AVE. & BIXBY AVE.

SHOWING
The exterior boundary of the District to be assessed therefor under
the provision of the County Street Opening Act of 1923, Approved May 11, 1923.
SCALE 1" = 100' JUNE 1924

Submitted *Alvarez* Approved *J.E. Rockhold*
Senior Engineer County Surveyor

Approved as to form
Edward T. Bishop - County Counsel
by *J.E. Rockhold*

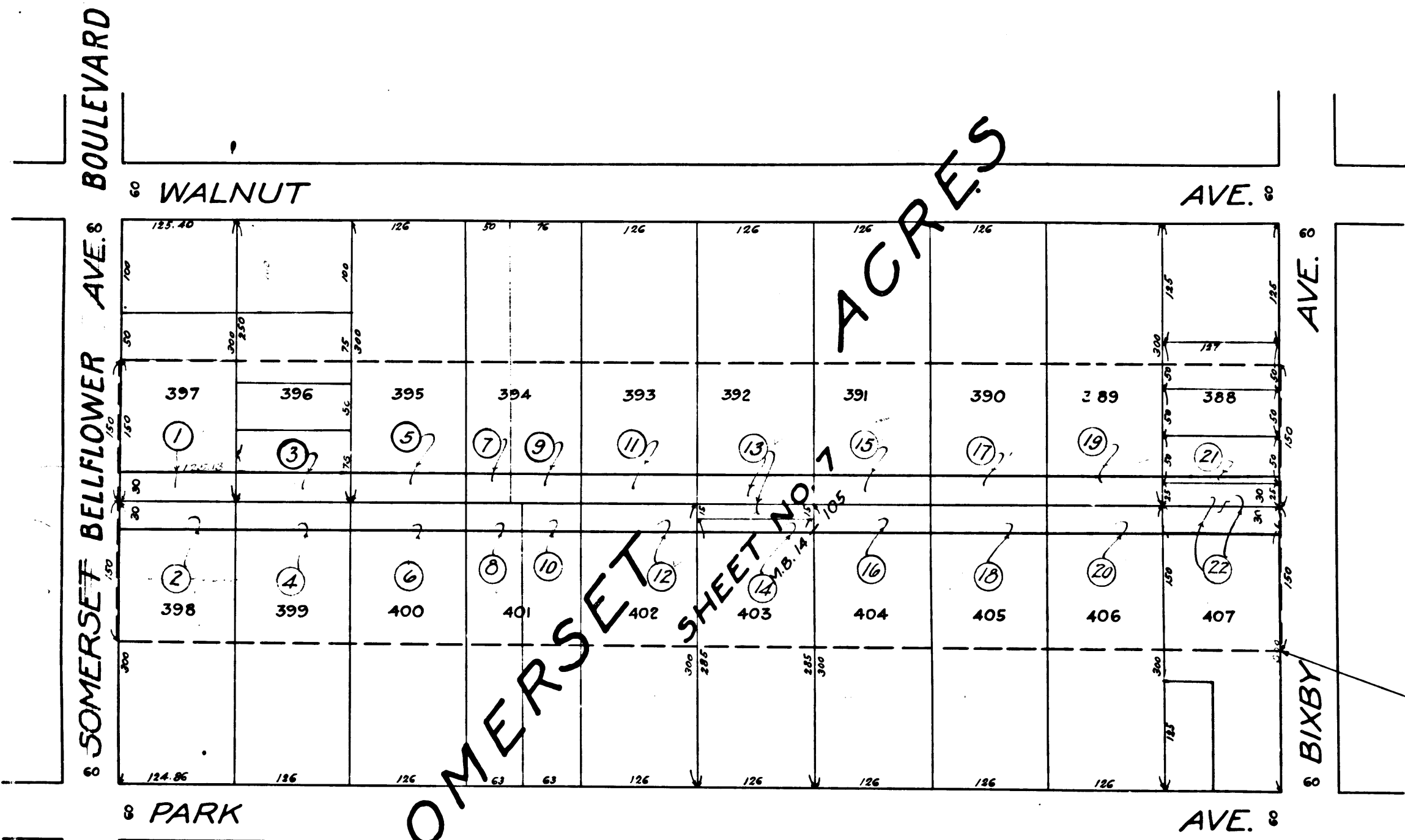
LEGEND
District Boundary Line - - - - -
Land sought to be condemned colored red

I hereby certify that the Board of Supervisors of Los Angeles
County did, on the 18th day of August, 1924, by resolution, duly
adopted, approve the accompanying map of the assessment district
of County Street Opening District No. 13 of the County of Los Angeles
for the opening of Arkansas Avenue.

Filed Aug 18, 1924 in the
office of the County Surveyor
of Los Angeles County.
J.E. ROCKHOLD - COUNTY SURVEYOR
by *Alvarez* Deputy

CLERK OF BOARD OF SUPERVISORS OF
SAID COUNTY OF LOS ANGELES
by *M. B. Sexton* Deputy

Sht. 33



Point of Beginning

EXHIBIT "A"

Number in circles indicate parcels sought
to be condemned.
The parcels are described in Paragraph
VII of the complaint.
Portion colored red shows location, gen-
eral route and termini of Public Road
to be condemned.

Superior Court Case No. 157826
Suit for Condemnation
Filed Nov. 28th 1924
County of Los Angeles Pltff.
Vs.
Andrew C. Ackerman et al Def.
Pending Dec. 18th 1924
Pending Feb. 18th 1925
Interlocutory Judgment rendered Sept. 25, 1925
Pending May 1st 1926
Judgment Book 597-353
Final judgment in favor of Plaintiff
as per map, rendered July 30th 1926
Judg. Book 611-178
D:67-229, O.R. 7178 - 131

C.F. 1181 -

O. & W. No. 13	
Drawn by M.E. Beatty	June 1924
Traced by G.W. Mook	June 1924
Checked by H.S. Dury	June 1924