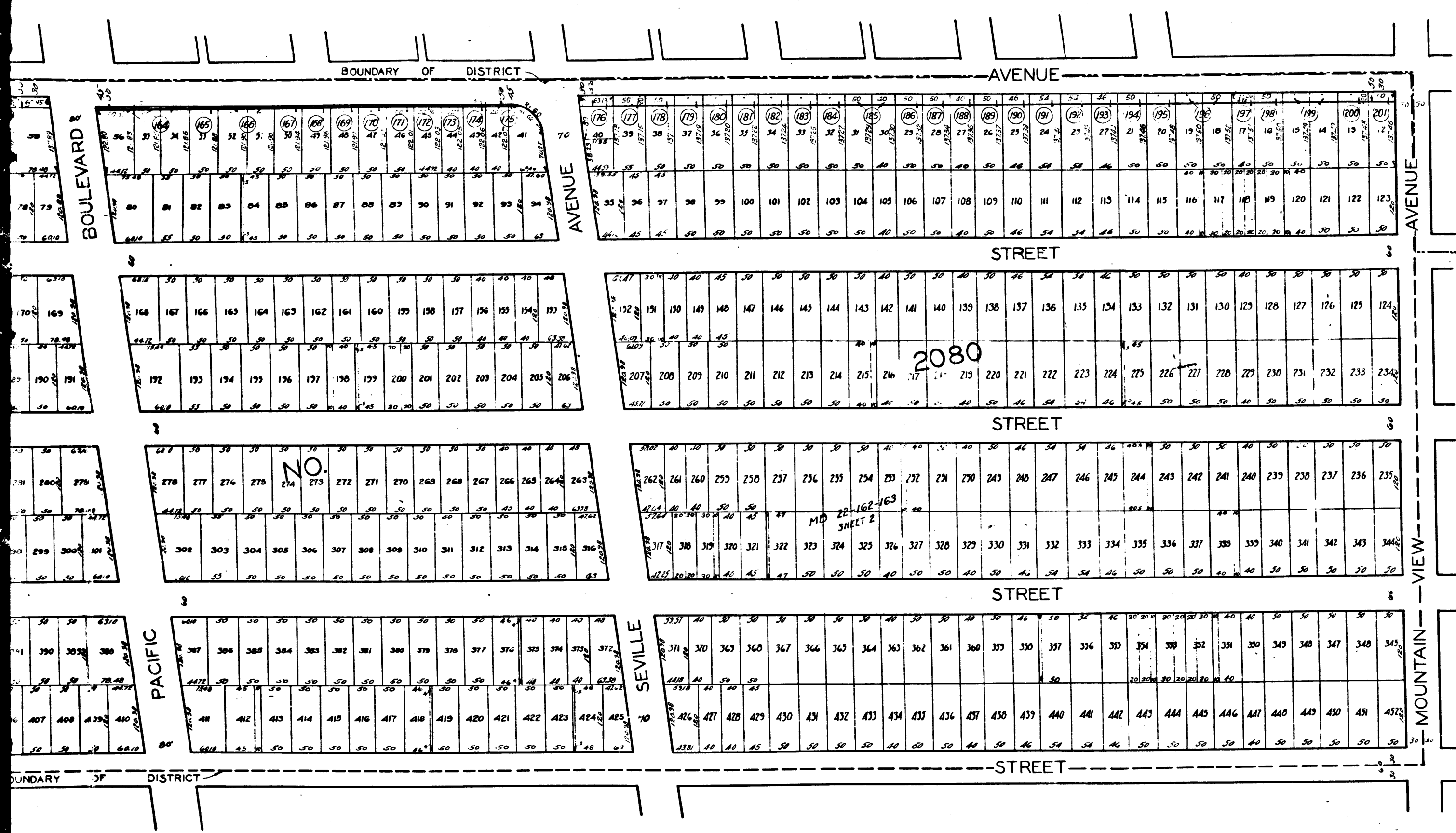


Superior Court Case No. 156888
 Suit for Condemnation
 Filed Nov. 15, 1924
 County of Los Angeles, Plaintiff
 VS
 C.E. Anderson, et al, Defendants
 Final Judgment in favor of Plaintiff
 rendered December 1st 1927
 D:64-13, O.R.6779-378



COUNTY
 STREET OPENING DISTRICT NO. 5
 MAP OF
**PROPOSED WIDENING
 OF FLORENCE AVE.**

BETWEEN
CENTRAL AVE. & MOUNTAIN VIEW AVE.
 SHEET 1 OF 2 SHEETS

SHOWING
 The exterior boundary of the District to be assessed hereafter under the provisions of the County Street Opening Act of 1923, Approved May 11, 1923.

SCALE 1"=100' MAR., 1924.

J. E. ROCKHOLD - COUNTY SURVEYOR

Submitted: *Alverson* Approved: *J. E. Rockhold*
 Senior Engineer County Surveyor

Approved as to form
 Edward T. Bishop, County Counsel
 by *Edward T. Bishop*
 Chief Deputy

- LEDGEND -
 City Boundary Line ————
 District Boundary Line - - - - -
 Land sought to be condemned colored red.

I hereby certify that the Board of Supervisors of Los Angeles County on the day of 1924, by resolution duly adopted, approved the accompanying map of the assessment district, County Street Opening District No. 5 of the County of Los Angeles for the widening of Florence Ave.

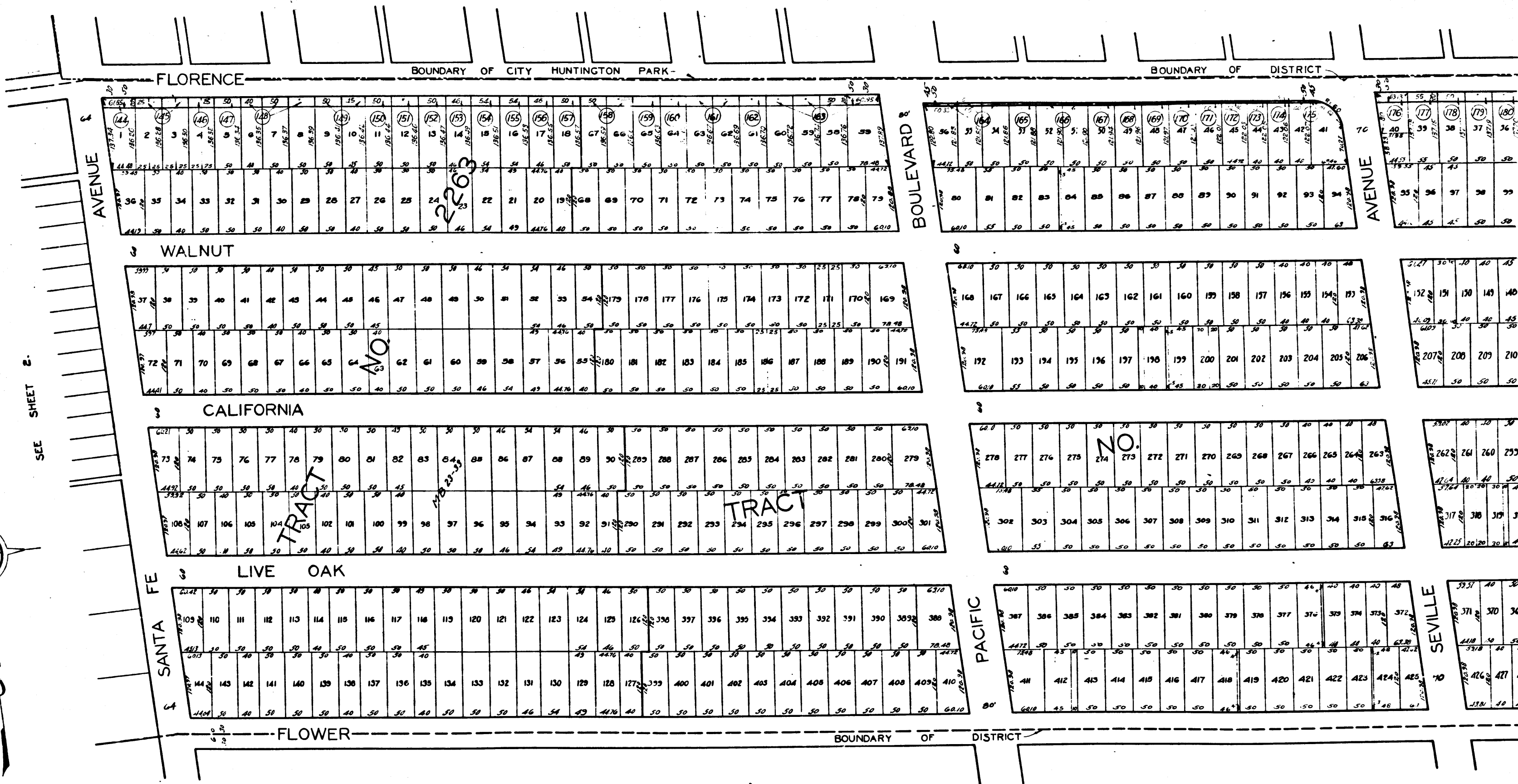
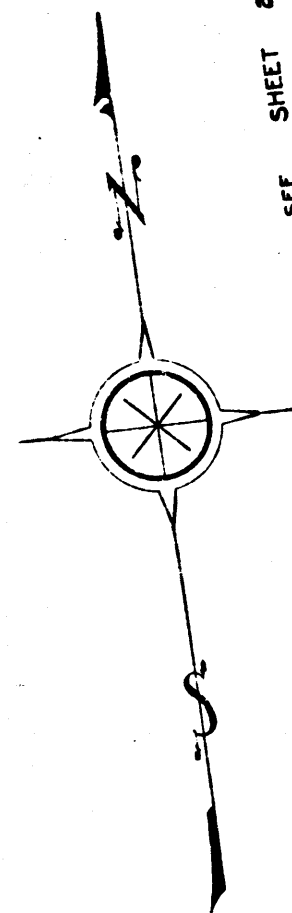
Clerk of Board of Supervisors of said County of Los Angeles.

by _____ Deputy.

C.F. 1184 1-2

I.M. # 7
 O. S. W. P. S.
 DISTRICT CLERK
 COUNTY OF LOS ANGELES

SEE SHEET 2.



2
 C.F. 1184 1-2