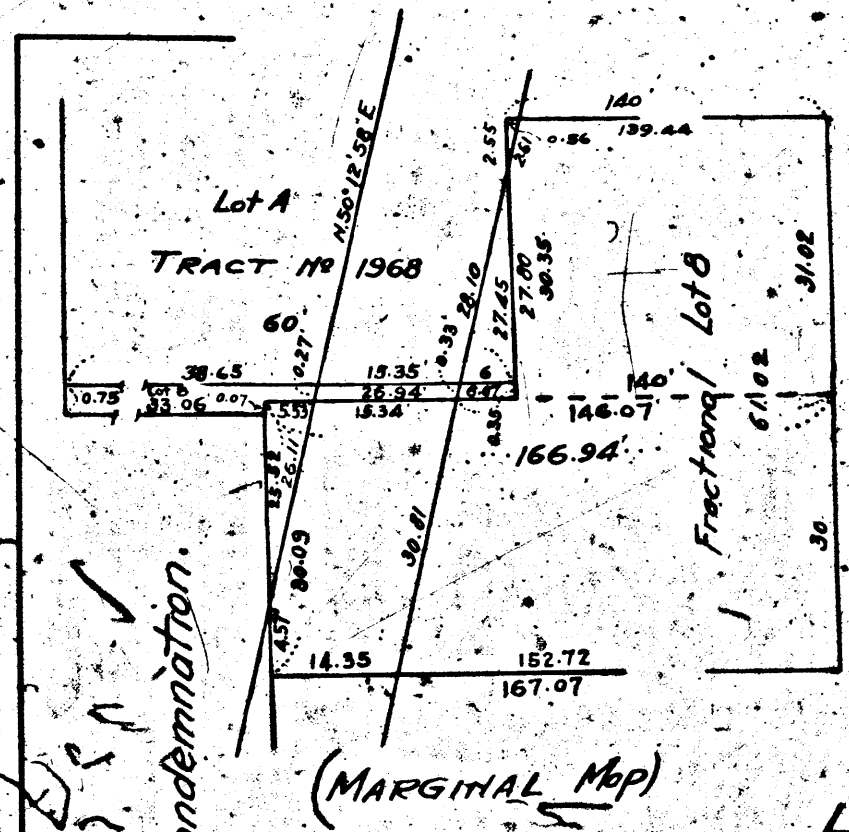


Interlocutory judgment as to certain parcels, rendered June 12th 1926
 Judg. Bk. 627-30
 Interlocutory judgment as to certain parcels, rendered July - 1926
 Judg. Bk. 612-55
 Pending Apr. 8th 1927
 Final judgment in favor of Pltff. as per map, rendered April 26, 1927.
 D:57-247 O. R. 6696-46

Complete entire portion in condemnation.



MAP
 SHOWING
LAND TO BE CONDEMNED
 FOR THE
OPENING
 OF AN
ALLEY

IN THE BLOCK BETWEEN OLIVE STREET AND GRAND AVENUE AND EXTENDING FROM THE SOUTHWESTERLY LINE OF TENTH STREET TO THE NORTHEASTERLY LINE OF ELEVENTH STREET

IN THE
CITY OF LOS ANGELES, CALIF.

In accordance with Ordinances Nos 48607 and 49292 (New Series)

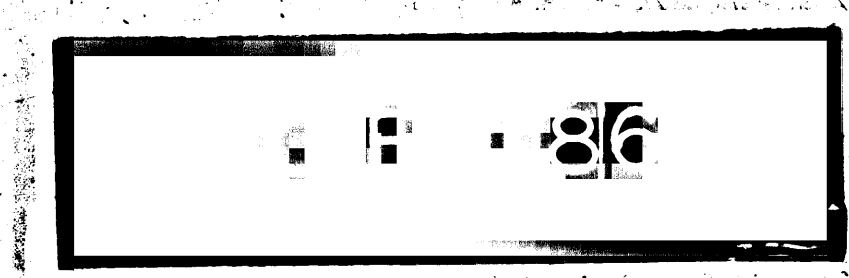
John A. Griffin
 City Engineer

Scale - 1 inch = 50 feet

SEPTEMBER 1924

Note - Broken lines and figures show property lines and dimensions in those cases where the actual holdings differ from the recorded subdivisions.
 Land to be condemned shown colored red.

Superior Court Case No. 158500
 Suit for Condemnation
 Filed Dec. 9th 1924
 City of Los Angeles Pltff.
 vs.
 A. Otis Birch et al Def.
 Pending Dec. 22nd 1924



OFFICE OF THE
 COUNTY CLERK

OFFICE OF THE
 COUNTY CLERK