

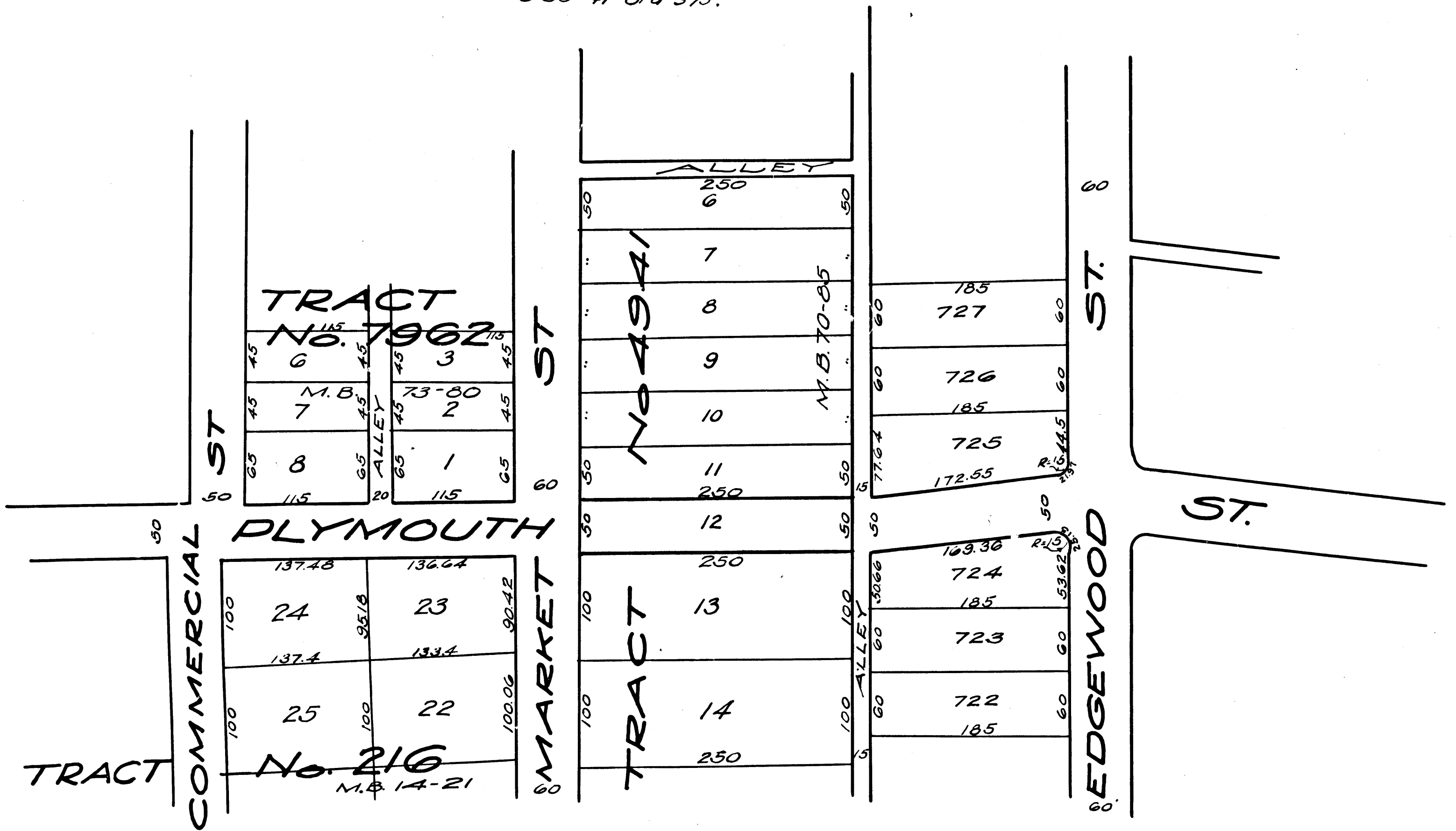
Superior Court Case No. 155446  
 Suit for Condemnation  
 Filed Oct. 27<sup>th</sup> 1924  
 City of Inglewood Pltff.  
 Vs.  
 Alfred E. Hovens et al Def.

Pending Jan 30<sup>th</sup> 1925  
 Pending Feb. 18<sup>th</sup> 1925

Final judgment in favor of Plaintiff  
 as per map, rendered Jan. 13<sup>th</sup> 1926

D:51-223 O.R. 5589-33

D:56-41 Ord-375.



**MAP**

Showing the Opening of  
**PLYMOUTH AVE.**

Between

the first Alley Westerly of Edgewood Street  
 to

**MARKET ST.**

in the City of Inglewood

COUNTY OF LOS ANGELES STATE OF CALIFORNIA

SCALE 1"=100'

Sht. 24

C.F. 1199 -