

MAP
 (CONSISTING OF 6 SHEETS)
 SHOWING LAND TO BE CONDEMNED
 FOR THE
 OPENING, WIDENING AND EXTENDING OF
RIVERSIDE DRIVE
 BETWEEN
 A POINT TWO HUNDRED (200) FEET NORTHWESTERLY OF
LOS FELIZ BOULEVARD
 AND
SAN FERNANDO ROAD
 IN THE
CITY OF LOS ANGELES, CALIFORNIA

IN ACCORDANCE WITH ORDINANCES NOS. 48863 (NEW SERIES) AND 49618 (NEW SERIES)

SCALE IN FEET; 1" = 40'

H.A. VAN NORMAN, City Engineer.

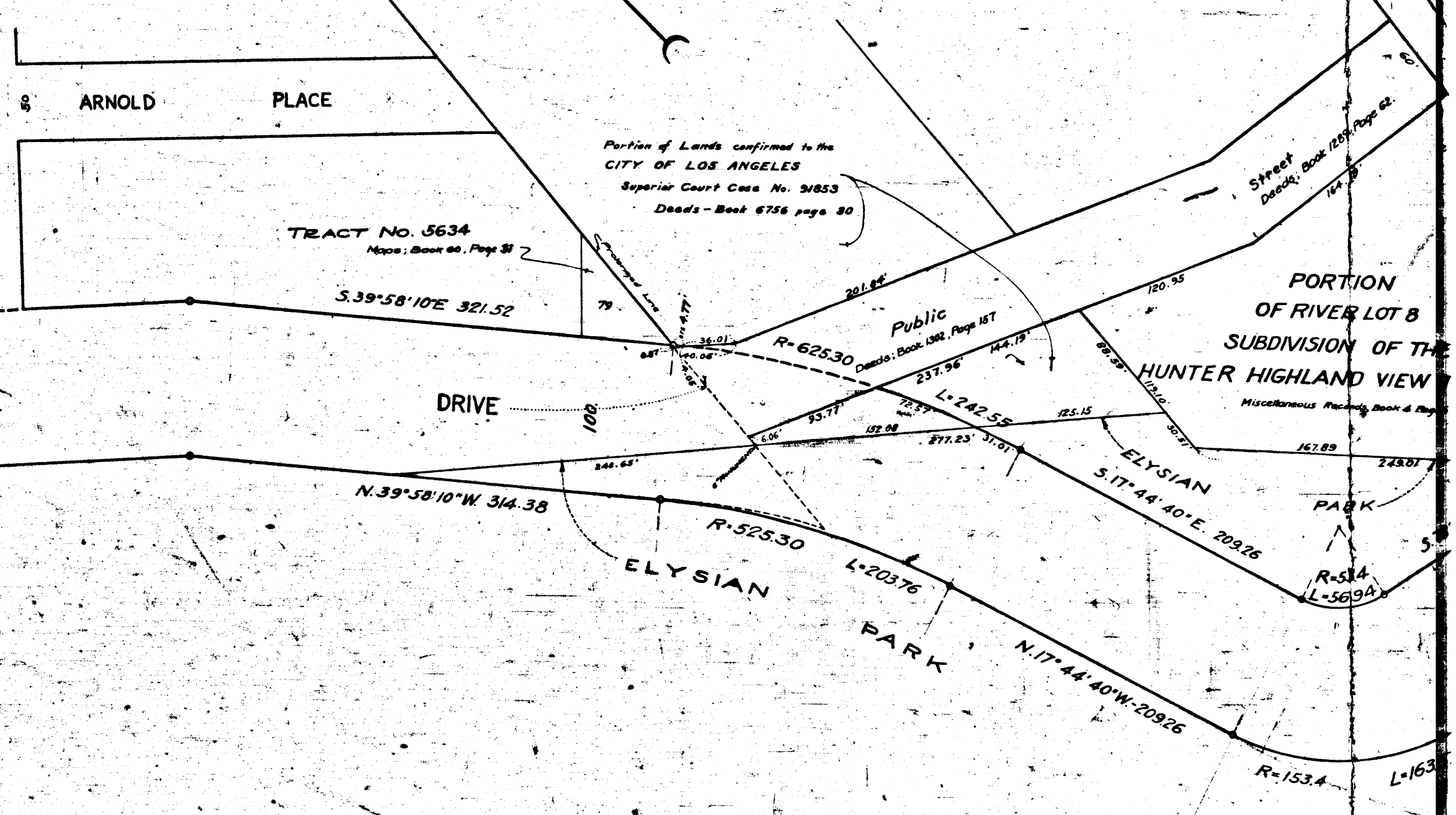
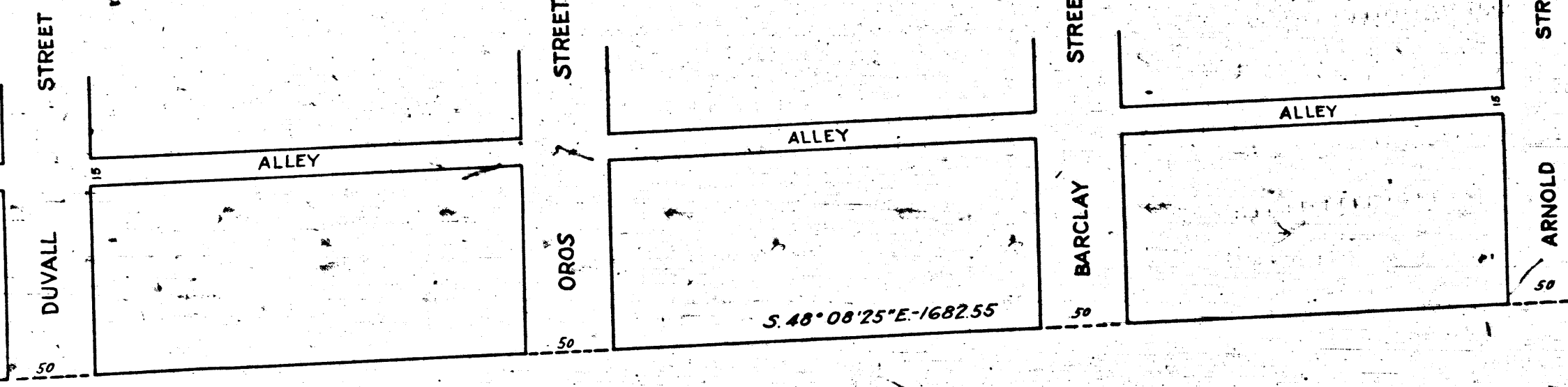
JANUARY, 1925.

Interlocutory judgment as per map with exception of parcels 81, 77, 83, 81, 83 and 85, rendered June 30th 1926
 Judg. Bk. 627-124
 Interlocutory judgment as to parcels 51, 77, 79, 81, 83 and 85, rendered July 7th 1926
 Judg. Bk. 610-128
 Pending Apr. 8th 1927
 Final judgment in favor of PITEE as to all parcels on this map (6 sheets) Feb. 6, 1928
 Judg. Book 677-81
 B: 65-104, D.R. 7856-40.

NOTE: Land to be condemned shown colored red. Dotted lines and dimensions show property holdings in those cases where they differ from recorded subdivisions.

3098
 Superior Court Case No 161615
 Suit for Condemnation
 Filed Jan 22nd 1925
 City of Los Angeles Pitee
 Vs
 James A Winter et al Def.
 Pending Feb. 9th 1925
 Mv 1 1926
 Ind. 18
 Sht. 2

For Continuation
See Sheet No. 2



Index #8

