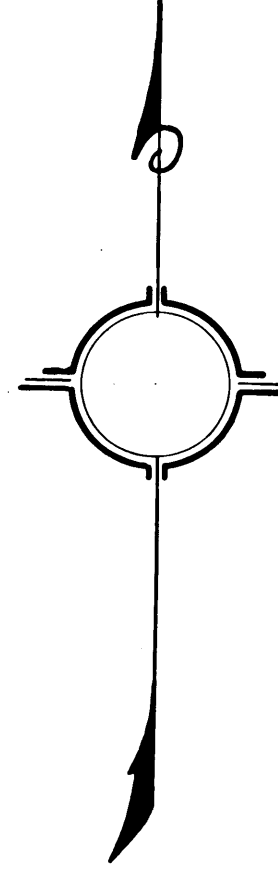
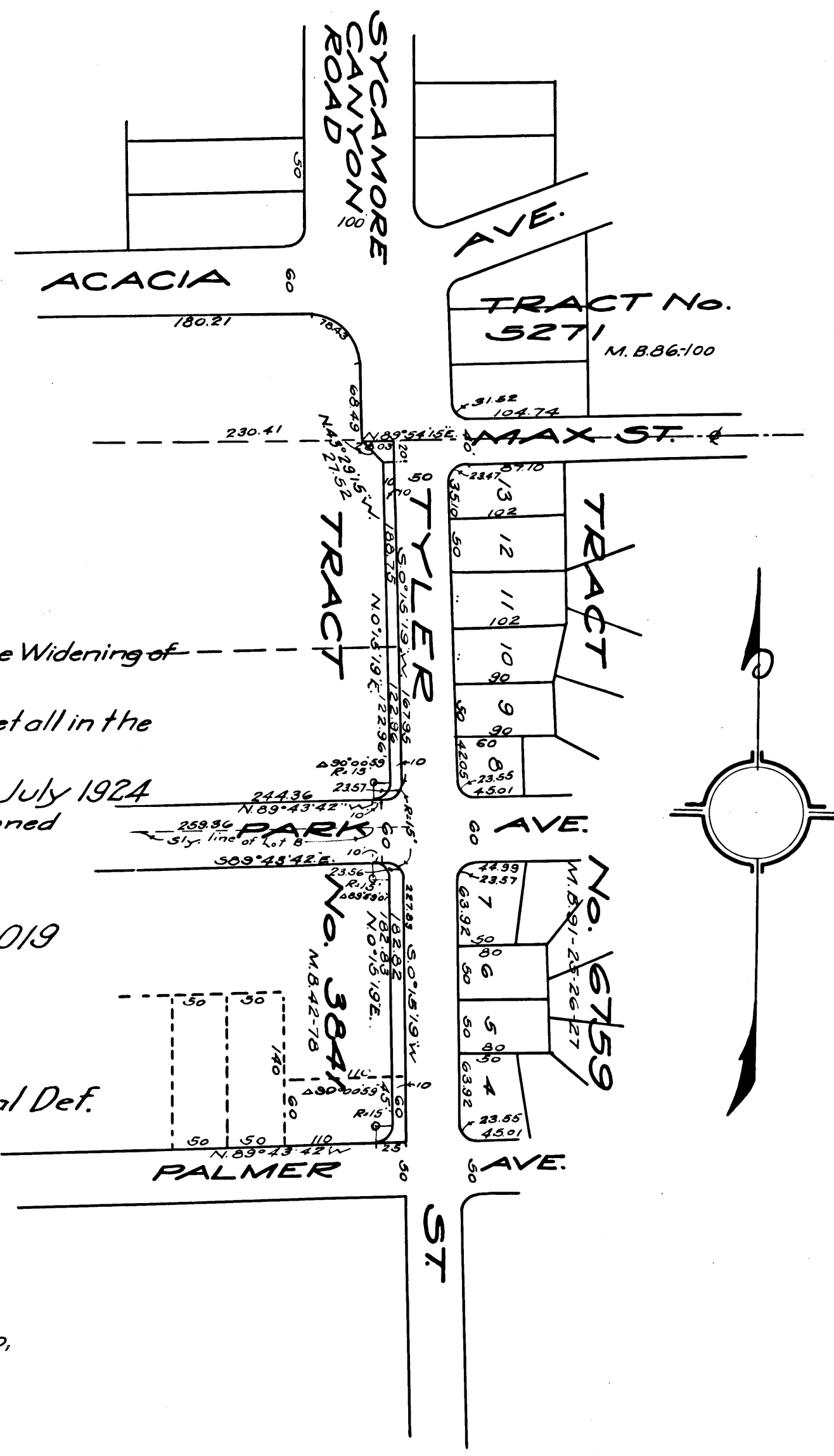


C.F. 1203 -



**PLAT No. 1121A**  
 Showing land to be Condemned for the Widening of  
**TYLER STREET**  
 From Palmer Street to Max Street all in the  
 City of Glendale  
 Scale 1"=100' July 1924  
 Red coloring Shows land to be Condemned

Superior Court Case No. 162019  
 Suit for Condemnation  
 Filed Jan 28<sup>th</sup> 1925  
 City of Glendale Pltff.  
 Vs  
 Richard Creagh Harnett et al Def.

Pending Feb. 10<sup>th</sup> 1925  
 Pending May 1<sup>st</sup> 1926  
 Interlocutory judgment as per map,  
 rendered June 28<sup>th</sup> 1926  
 Judg. Bk. 629-119  
 Pending Apr. 8<sup>th</sup> 1927  
 Final judgment in favor of Pltff, as per map,  
 rendered June 29, 1927.

D:59-238 O.R. 7008-173.

Sht. 41  
A-177

