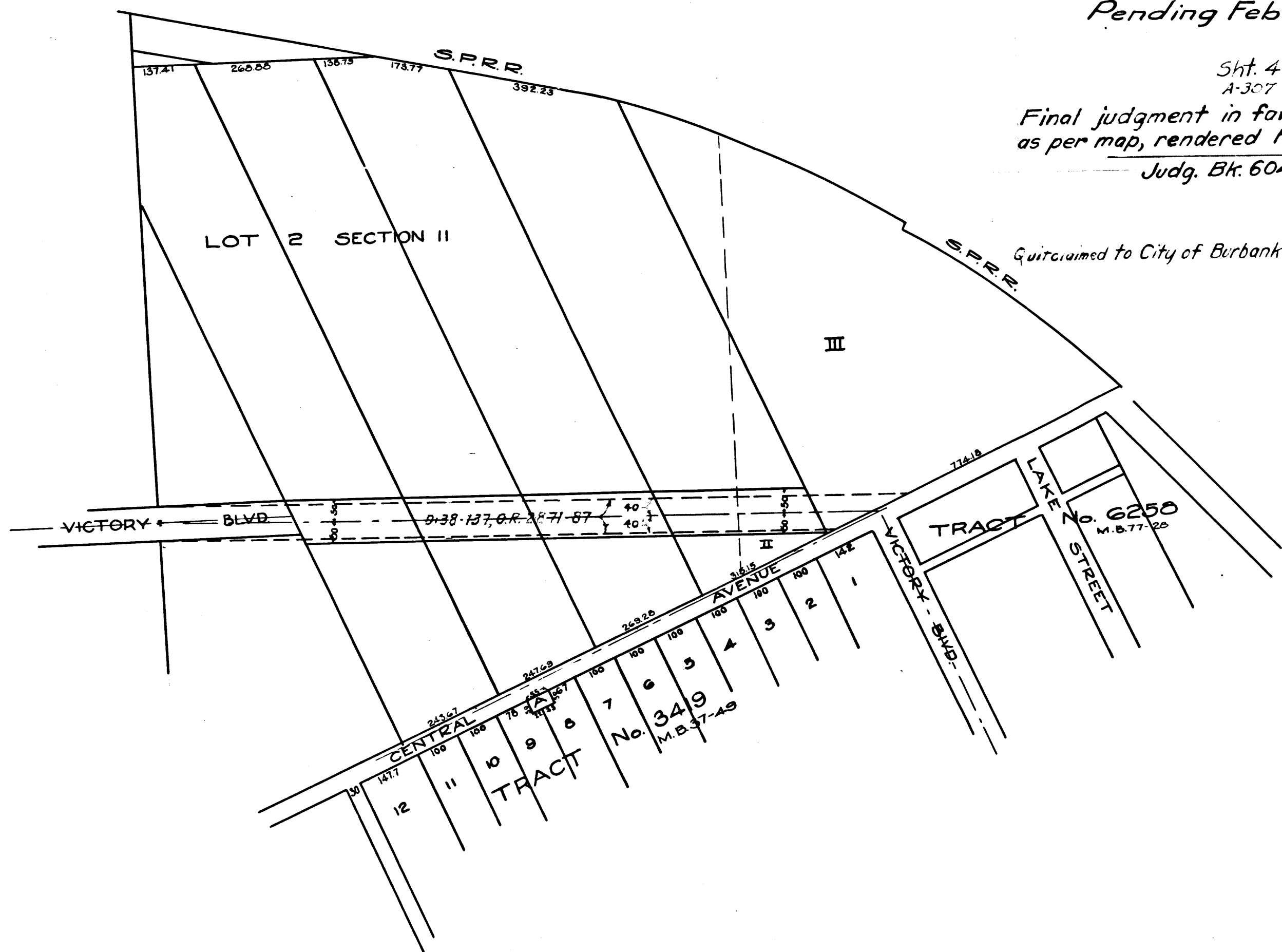


MAP
Showing the Land to be Condemned
For the Opening of
VICTORY BLVD.
BETWEEN
Central Avenue and the Westerly City limits
all within the City of Burbank
Scale 1" = 200'

Superior Court Case No. 162353
Suit for Condemnation
Filed Feb. 3rd 1925
City of Burbank Pltff.
Vs
James Modigan et al Def.
Pending Feb. 11th 1925

Sht. 40
A-307
Final judgment in favor of Plaintiff
as per map, rendered Feb. 2nd 1926
Judg. Bk. 604-143



C.F. 1206 -