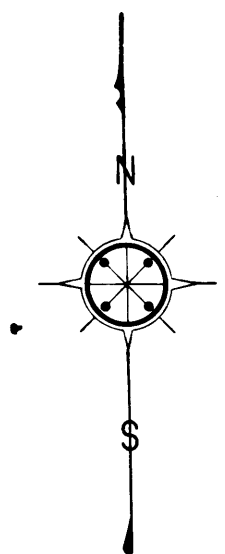


COUNTY
STREET OPENING DISTRICT No. 28.
MAP OF
PROPOSED OPENING
OF MAPLE AVE.
BETWEEN SOMERSET AVE & WOODRUFF AVE.



SHOWING
The exterior boundary of the district to be assessed therefor under the provisions of the County Street Opening Act of 1923, Approved May 11, 1923.

SCALE 1" = 100'

OCTOBER 1924

J.E. ROCKHOLD - COUNTY SURVEYOR

Submitted *Alfred Jones* Chief Deputy Approved *J.E. Rockhold* County Surveyor

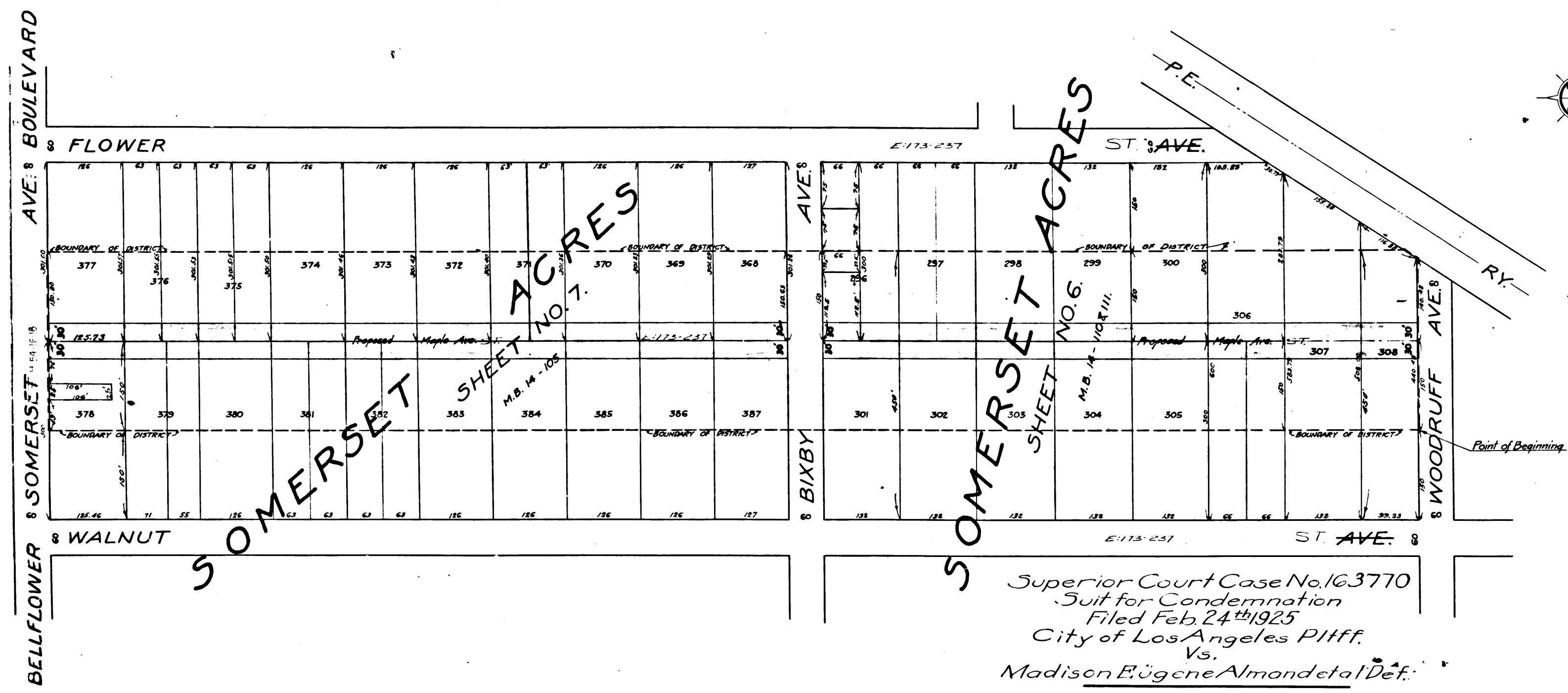
Approved as to form
Edward T. Bishop - County Counsel
by *Edward T. Bishop* Chief Deputy

LEGEND
District Boundary Line
Land sought to be condemned colored red.

I hereby certify that the Board of Supervisors of Los Angeles County did, on the 3rd day of *Nov.* 1924, by resolution duly adopted, approve the accompanying map of the assessment district of County Street Opening District No. 28 of the County of Los Angeles, for the opening of Maple Ave.

Filed *Nov. 3* 1924 in the
Office of the County Surveyor
of Los Angeles County.
J.E. ROCKHOLD - County Surveyor
by *N.F. Cobb* Deputy

CLERK OF BOARD OF SUPERVISORS
OF SAID COUNTY OF LOS ANGELES.
by *Mame B. Kelly* Deputy
Sh. # 33



Superior Court Case No. 163770
Suit for Condemnation
Filed Feb. 24th 1925
City of Los Angeles Plff.
Vs.
Madison Eugene Almond et al Def.
Pending Mar. 16th 1925
Interlocutory Decree rendered Feb. 11th 1926
Pending May 1st 1926
Judgment Book 605-205
Final judgment in favor of Plaintiff
as per man, rendered Dec. 15th 1926
Judg. Br. 631-182

C.F. 1209 -

| | |
|--------------|-------------|
| O. & W. No.: | B |
| Drawn by: | G.W. Meek |
| Traced by: | Man |
| Checked by: | F.W. Herold |
| | Oct. |