

Superior Court Case No. 163844
 Submission
 Filed Feb 24th 1925
 City of Alhambra, Plff.
 Vs
 Malibu Holding Co. et al Def.

MAP

SHOWING LAND SOUGHT TO BE CONDEMNED FOR THE OPENING OF
NORWOOD PLACE BETWEEN THE WEST SIDE OF CURTIS AVENUE AND
 THE EAST SIDE OF ETHEL AVENUE ALSO FOR WIDENING SAID
NORWOOD PLACE TO A UNIFORM WIDTH OF SIXTY FEET FROM
 ADDIE AVENUE TO FREMONT AVENUE.

Pending March 5th 1925

Sh. 43

Proceedings abandoned. D-51-298 Ord. 1290

Dismissed Feb 7th 1926

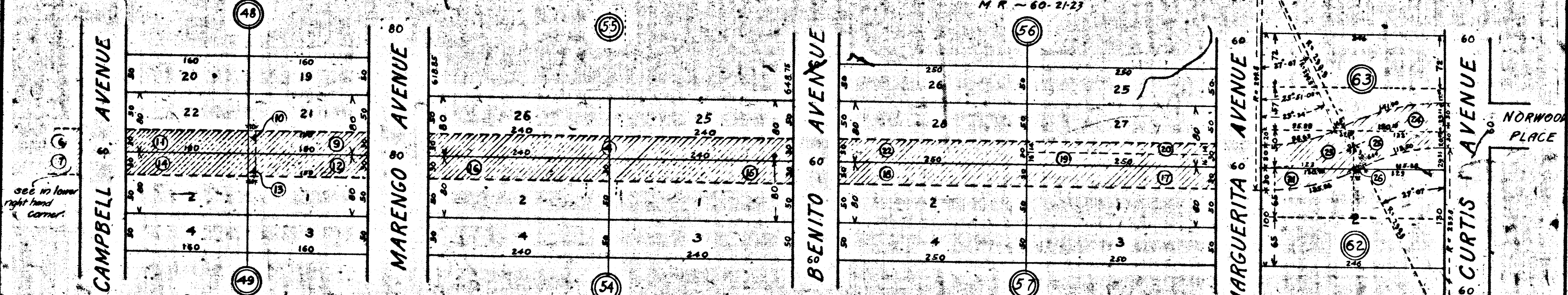
CITY OF ALHAMBRA
 LOS ANGELES COUNTY
 STATE OF CALIFORNIA

SCALE - 1" = 100'

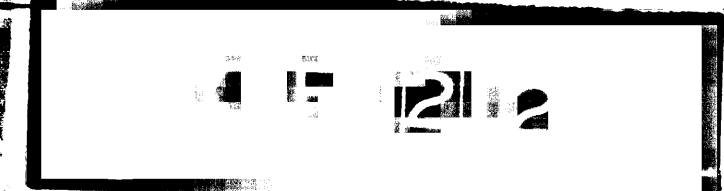
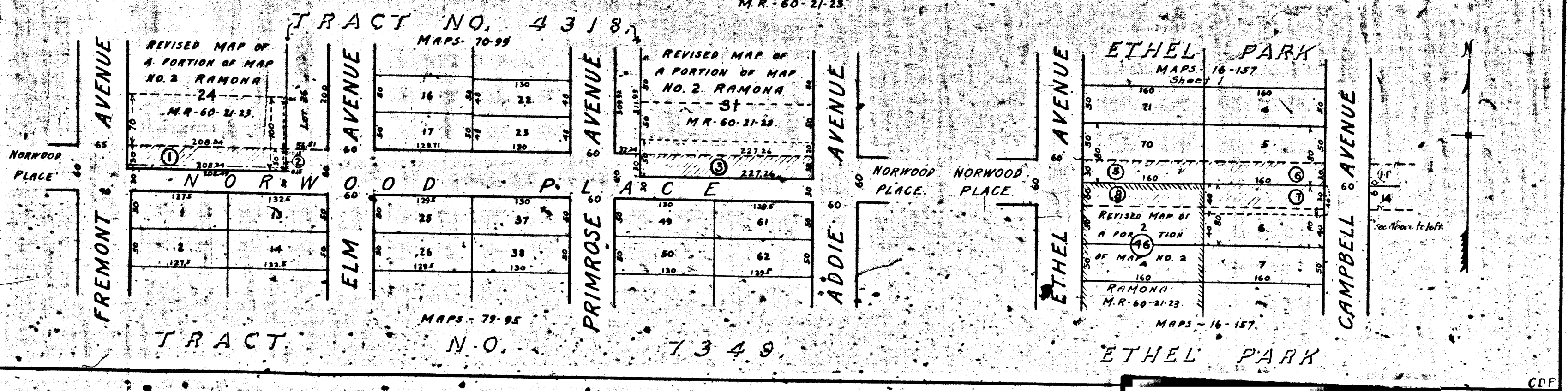
NOTE - SHADED PORTION SHOWS LAND SOUGHT TO BE CONDEMNED

M.H. IRVINE
 CITY ENGINEER
 FEBRUARY 1925
 C.D.P.

REVISED MAP OF A PORTION OF MAP NO. 2 RAMONA



REVISED MAP OF A PORTION OF MAP NO. 2 RAMONA



RIT "C"