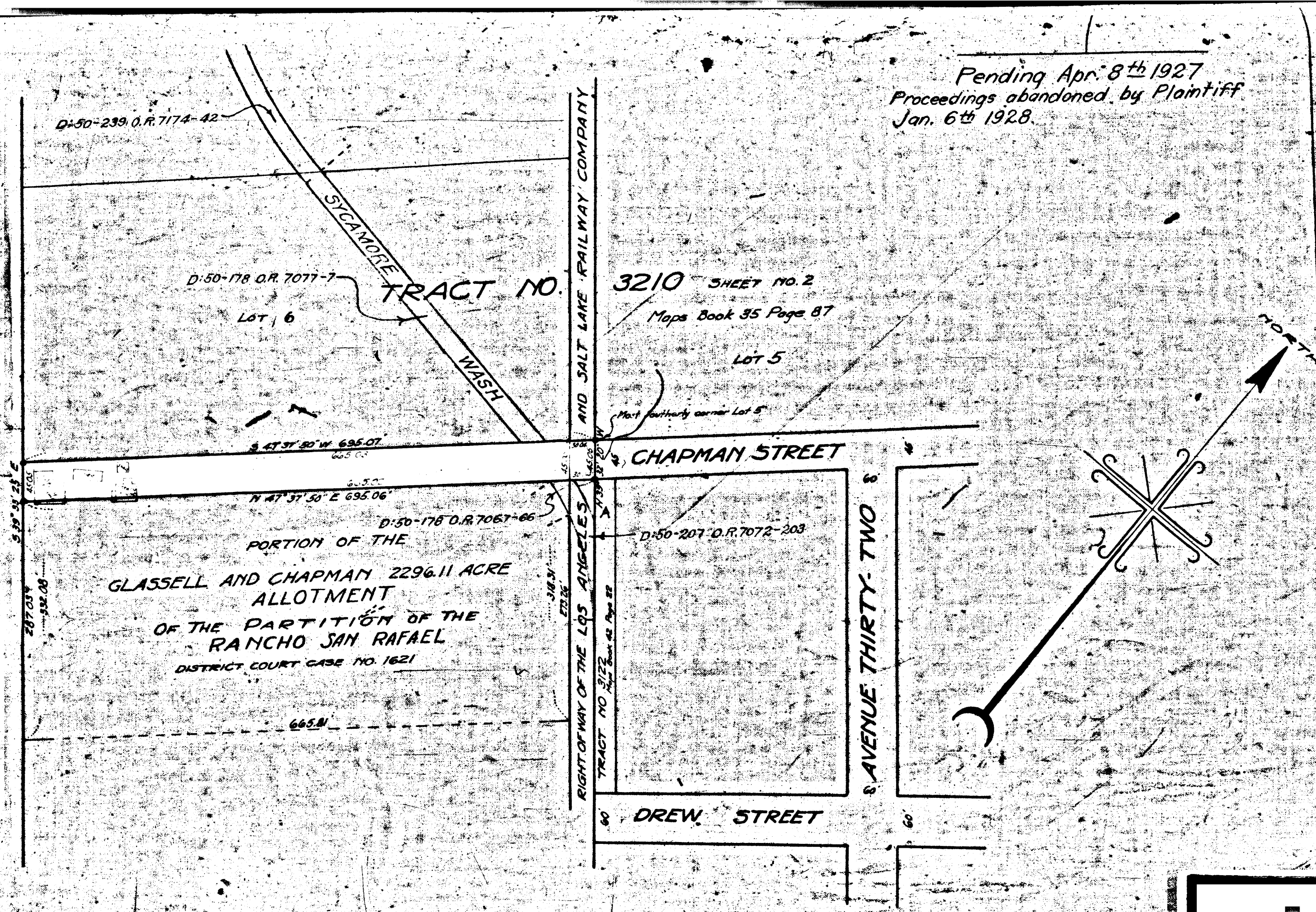


5833 A

5833 A

5833 A

5833 A



Pending Apr. 8<sup>th</sup> 1927  
 Proceedings abandoned by Plaintiff  
 Jan. 6<sup>th</sup> 1928.

Superior Court Case No. 103931  
 Suit for Condemnation  
 Filed Feb. 25<sup>th</sup> 1925  
 City of Los Angeles Plff.  
 Vs.  
 Union Pacific Ry. Co. et al. Def.

Pending March 9<sup>th</sup> 1925  
 May 1, 1926  
 Interlocutory judgment as per map, rendered  
 July 30<sup>th</sup> 1926 - Judg. Blk. 611-176

3210 SHEET NO. 2  
 Maps Book 35 Page 87

MAP  
 SHOWING LAND TO BE CONDEMNED  
 FOR THE OPENING AND EXTENDING OF  
**CHAPMAN STREET**

BETWEEN  
 AVENUE THIRTY-TWO  
 AND  
 SAN FERNANDO ROAD  
 IN THE CITY OF LOS ANGELES CAL.  
 IN ACCORDANCE WITH ORDINANCES NOS. 49041 AND 50201 (NEW SERIES)  
 H. A. VAN NORMAN, CITY ENGINEER  
 JANUARY 1925

SCALE 1 INCH = 100 FEET

Note: Land to be condemned shown colored red.  
 Dotted lines and dimensions show property holdings in  
 those cases where they differ from recorded subdivisions.

A 2833

