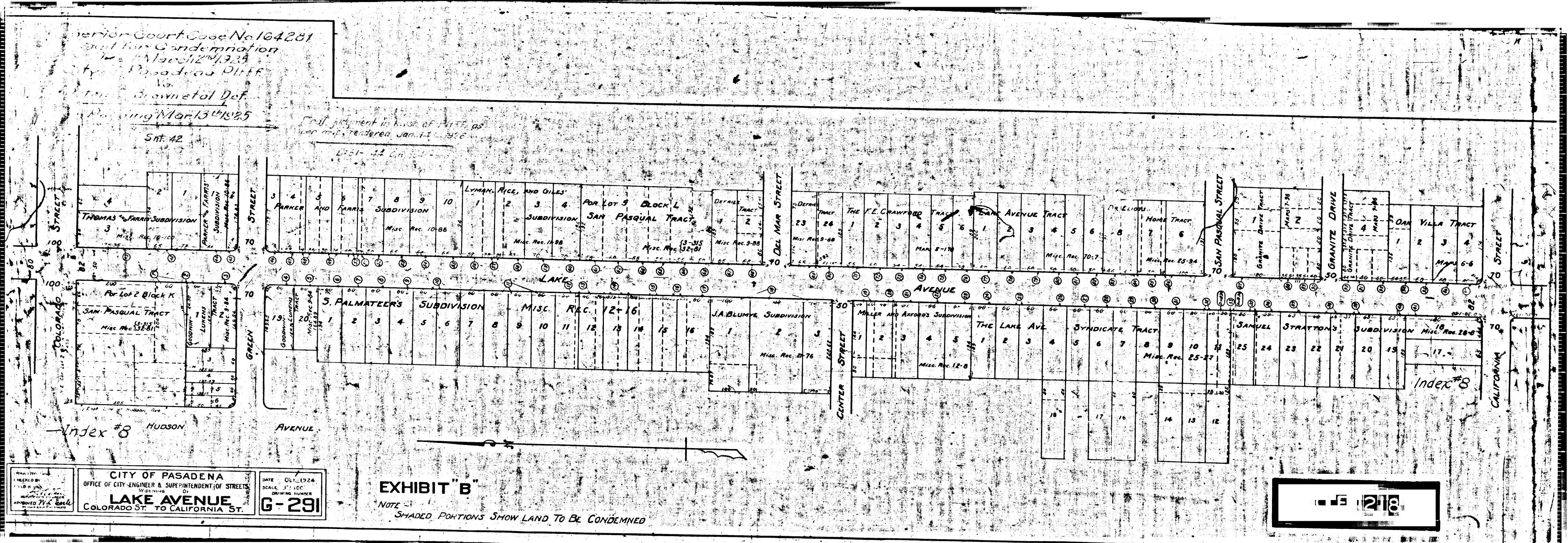


Superior Court Case No 164281
 Suit for Condemnation
 vs. Pasadena Plff
 vs. Brown et al Def.
 Planning Map 1341825

Final judgment in favor of Plff as
 per order rendered Jan. 11, 1956



CITY OF PASADENA
 OFFICE OF CITY ENGINEER & SUPERINTENDENT OF STREETS
 LAKE AVENUE
 COLORADO ST. TO CALIFORNIA ST.
 DATE 05-19-54
 SCALE 1" = 100'
 DRAWING NUMBER
G-291

EXHIBIT "B"
 NOTE
 SHADED PORTIONS SHOW LAND TO BE CONDEMNED

