

Superior Court Case No. 165034
 Suit for Condemnation
 Filed Mar. 12th 1925
 County of Los Angeles Pltff.
 Vs
 Wayne E. Axtell et al Def.
 Pending Mar. 18th 1925
 Interlocutory decree rendered 3-23-26
 Pending May 1st 1926
 Judgment Book 604-300
 Pending Apr. 8th 1927
 Final judgment in favor of Pltff. as per map rendered
 April 25, 1928
 D-67-88, O.R. 7135-82

COUNTY
 STREET OPENING DISTRICT NO. 15.
 MAP OF
**PROPOSED WIDENING
 OF SOMERSET AVE.**
 BELLFLOWER BLVD
 BETWEEN
 ARTESIA AVE. AND FLOWER AVE.

SOMERSET
 SHEET N^o 7
 M.B. 14-105
 ACRES

SHOWING
 The exterior boundary of the District, to be assessed therefor under the
 provision of the County Street Opening Act of 1923, Approved May 11, 1923.
 SCALE 1" = 100' JULY 1924

Submitted *Al Warren* Senior Engineer
 Approved *J.E. Rockhold* County Surveyor

Approved as to form
 Edward J. Bishop - County Counsel
 By *Edward J. Bishop* City Attorney

LEGEND
 District Boundary Line - - - - -
 Land sought to be condemned colored red

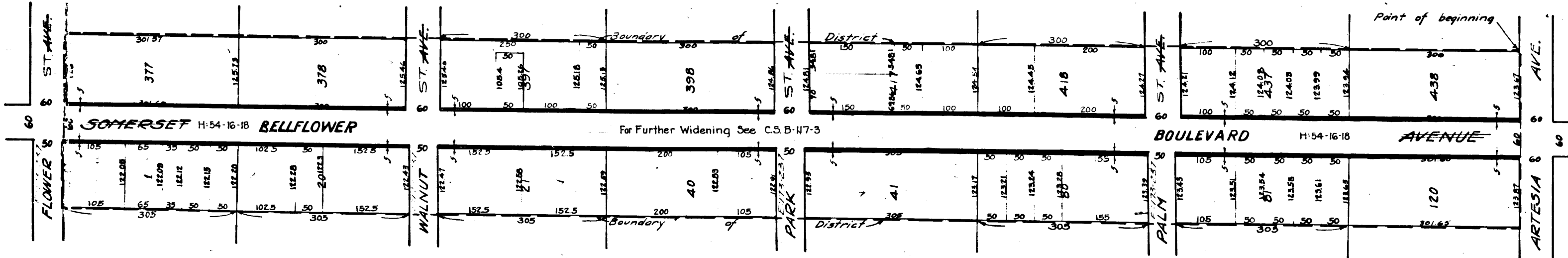
It is hereby certified that the Board of Supervisors of Los Angeles
 County did, on the 14th day of October, 1924, by resolution, duly
 adopted, approve the accompanying map of the assessment district
 of County Street Opening District No. 15 of the County of Los Angeles
 for the widening of Somerset Ave.

CLERK OF BOARD OF SUPERVISORS OF
 SAID COUNTY OF LOS ANGELES
 by *James S. Reath* Deputy

Filed October 14, 1924 in the office of the
 Surveyor of Los Angeles County.

J. E. ROCKHOLD
 COUNTY SURVEYOR
 DEPUTY

S.O. Dist. No. 15
 Drawn by F.W. Park
 Traced by F.W. Park
 Checked by H. Dwyer



BELL FLOWER
 SHEET N^o 1
 M.B. 16-136
 ACRES

C.F. 1222-