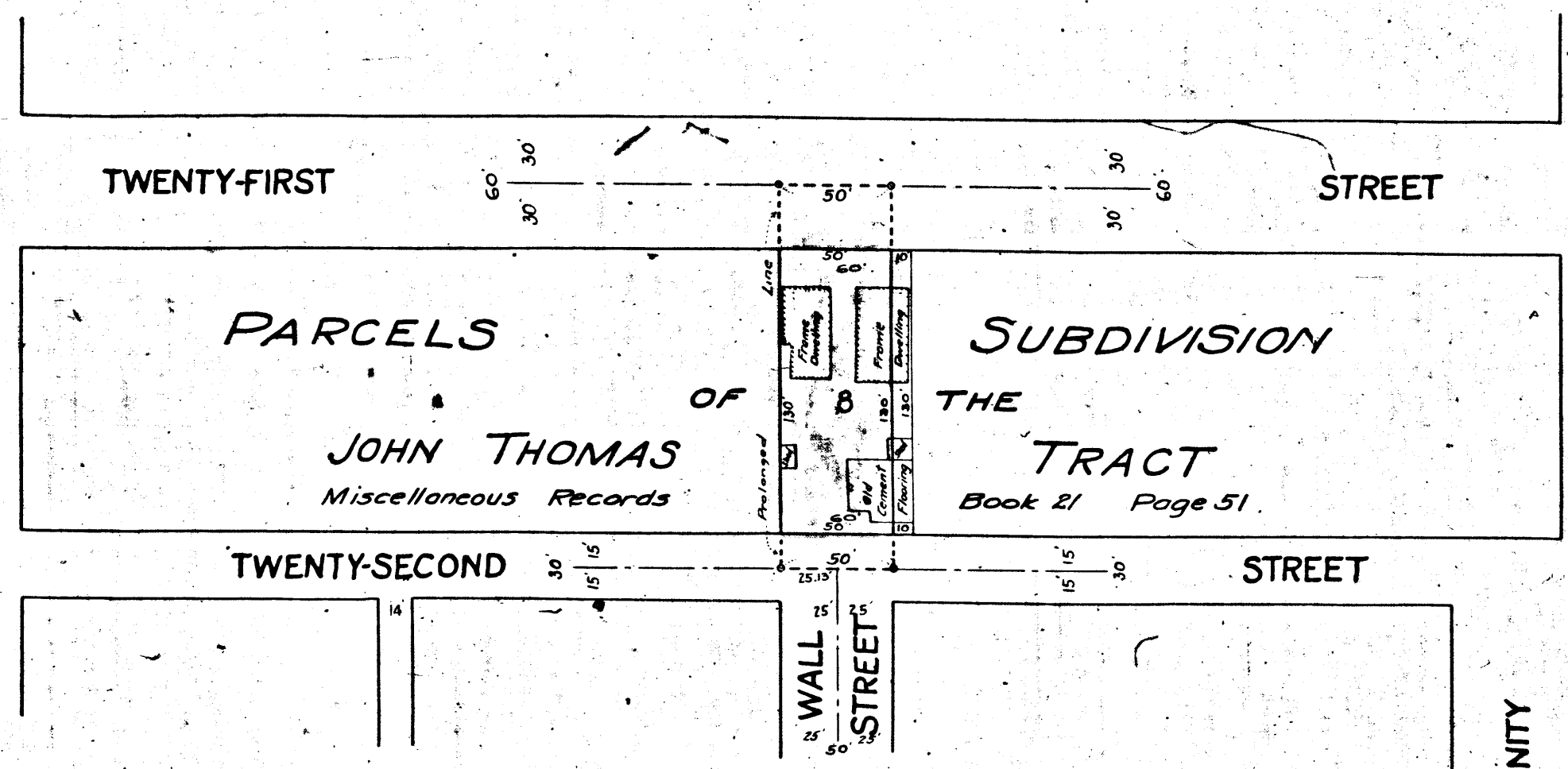
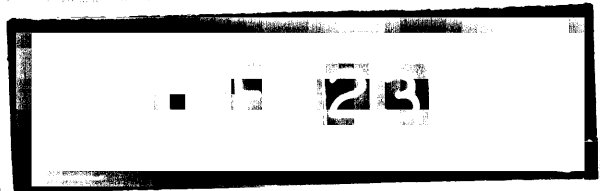


70053
T.C.S.S.-A
CITY OF LOS ANGELES
HARBOR LA CALIF
CITY FIRST
STREET
T.C.S.S.-A

AVENUE
MAPLE



60'
60'
STREET
TRINITY



NORTH

MAP
SHOWING LAND TO BE CONDEMNED
FOR THE
OPENING AND EXTENDING
OF
WALL STREET
BETWEEN
TWENTY-FIRST STREET
AND
TWENTY-SECOND STREET

IN THE CITY OF LOS ANGELES, CALIFORNIA
IN ACCORDANCE WITH ORDINANCES Nos 49616 and 50836 (New Series)
H. A. VAN NORMAN, City Engineer, FEBRUARY 1925.
SCALE 1 INCH = 50 FEET
Note: Land to be Condemned Shown Colored Red.

Superior Court Case No. 165218
Suit for Condemnation
Filed Mar. 14th 1925
City of Los Angeles Pltff.
Vs.
Edward Foy Sheffield et al Def.

Pending Mar. 24th 1925
Interlocutory Judgment rendered 9-30-25
A-2857
Judgment book 599-23
Final judgement in favor of Pltff. as per
map, rendered June 9th 1926
D-54-251, O.R. 6102-104

T.C.S.S.-A
CITY OF LOS ANGELES
HARBOR LA CALIF
CITY FIRST
STREET
T.C.S.S.-A