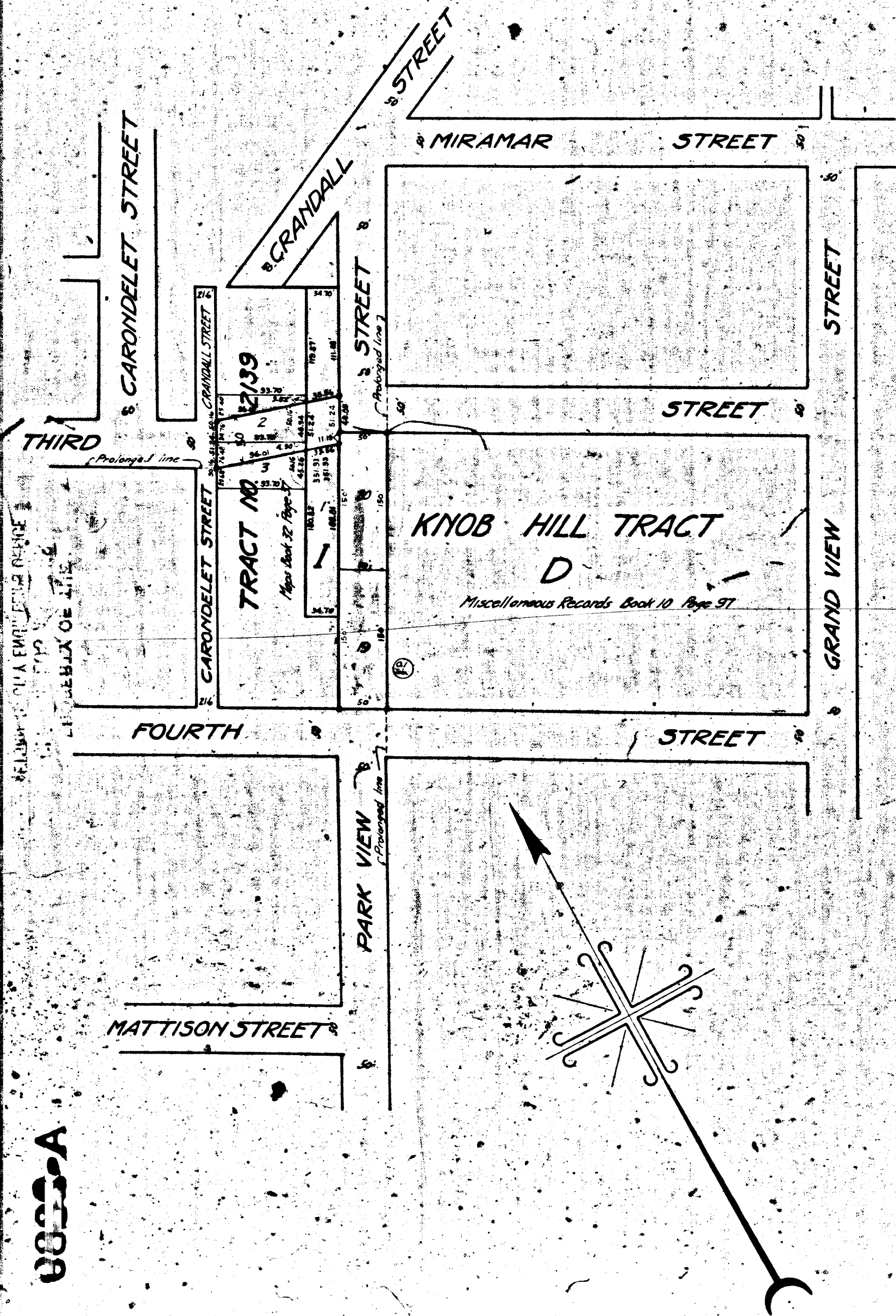


0888-A

0888-A



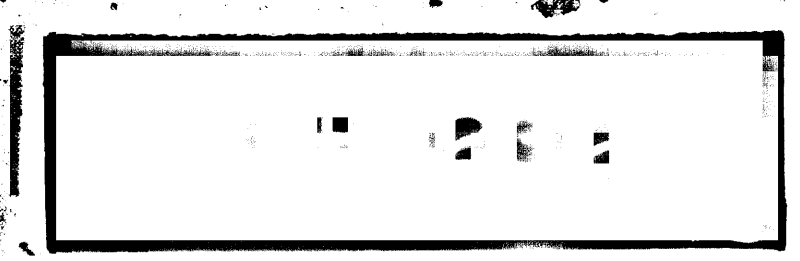
MAP
 SHOWING THE LAND TO BE CONDEMNED
 FOR THE OPENING AND EXTENDING OF
PARK VIEW STREET
 BETWEEN
 THIRD STREET AND FOURTH STREET
 ALSO OF
THIRD STREET
 BETWEEN
 PARK VIEW STREET AND CARONDELET STREET
 IN THE
 CITY OF LOS ANGELES, CAL.

IN ACCORDANCE WITH ORDINANCES NOS. 49121 AND 50046 (NEW SERIES)
 H. A. VAN NORMAN, CITY ENGINEER MARCH 1925
 SCALE 1 INCH = 100 FEET

Note: Land to be condemned shown colored red.

Superior Court Case No. 165150
 Suit for Condemnation
 Filed Mar. 13th 1925
 City of Los Angeles Pltff.
 Vs.
 J. Truitt et al Def.

Pending Mar. 25th 1925
 " May 1, 1926
 Case dismissed Sept. 27th 1926
 Sh't 3



0888-A

0888-A